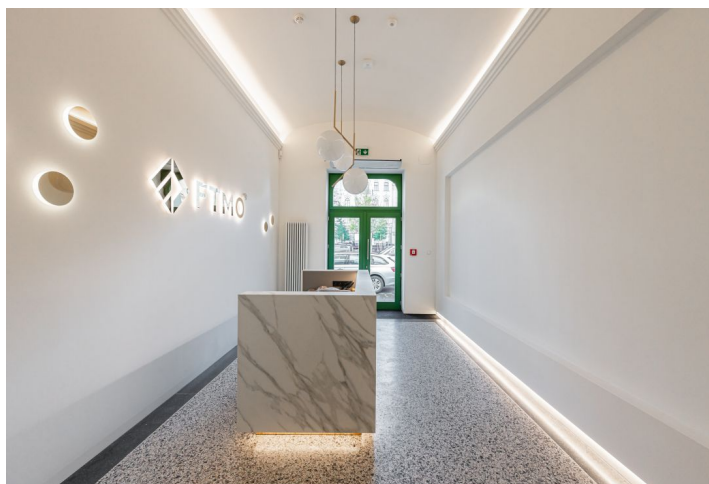


Office building

Rented

Prague 2, Nové Město, náměstí I. P. Pavlova



Office building

Rented

Prague 2, Nové Město, náměstí I. P. Pavlova

Service price	130 CZK monthly per m ²
Total building area	1 190 m ²
Tenant consumption	—
Parking	3 000 CZK
Parking service charges	—
Parking ratio	—
Certification	—
PENB	G
Reference number	41530

Representative office space for lease in a reconstructed building located in the centre of Prague - right on I.P. Pavlova Square. The building offers up to 1 170 sq. m of leasable area on 6 floors. On each floor there are sanitary facilities, a kitchen and a cleaning room. It also includes air conditioning and the possibility of layout of the premises. 12 parking spaces will be also available.

Location:

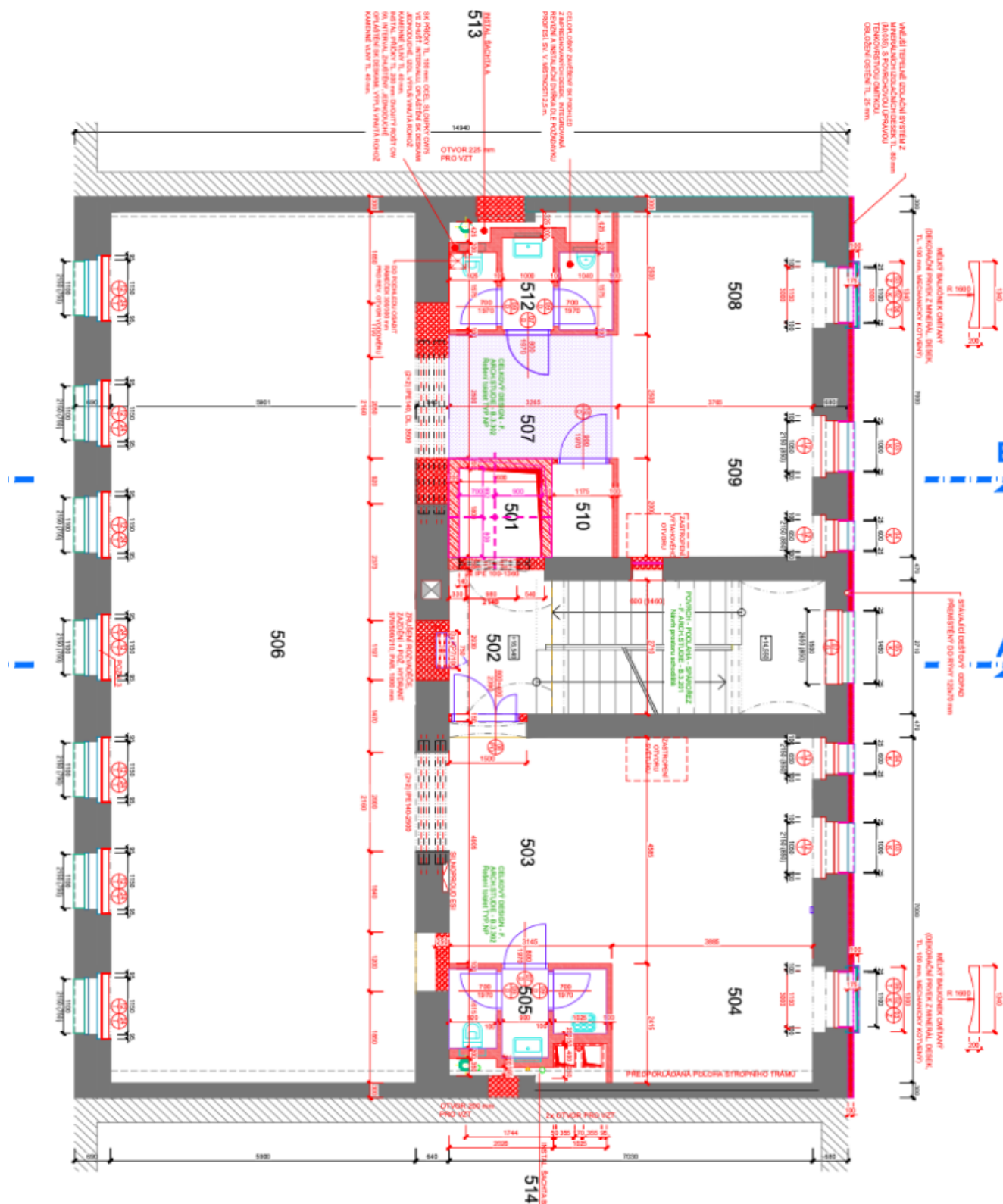
Great accessibility by car and public transport. The I.P. Pavlova tram stop and the I.P. Pavlova metro station (line C) are nearby. Wenceslas Square is 10 minutes away by metro or tram. Complete civic amenities in the vicinity.

Features and Services:

Warehouse
Reception
Parking in the courtyard
12 parking spaces
Electric charging
Connection to PCO
Air conditioning
Elevator
Possibility to customize the fitout
Kitchenette, toilets

Rental and service charges listed without VAT. Lessee pays no commission.

PŮDORYS 5. NP - NOVÝ STAV



PŮDORYS 3. NP - NOVÝ STAV



PŮDORYS 2. NP - NOVÝ STAV

