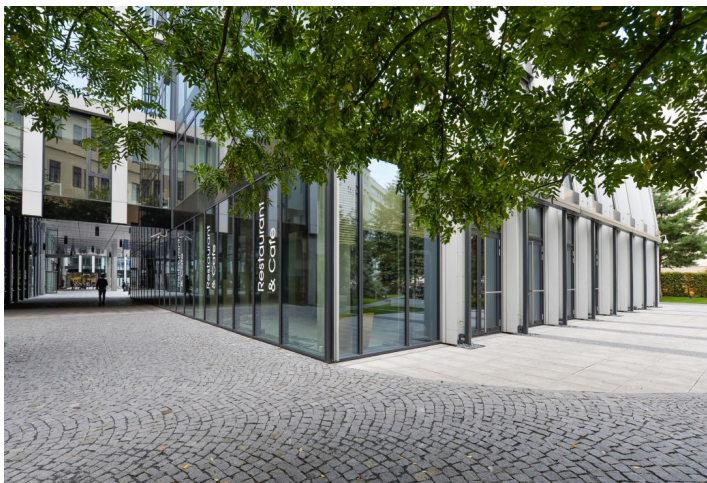
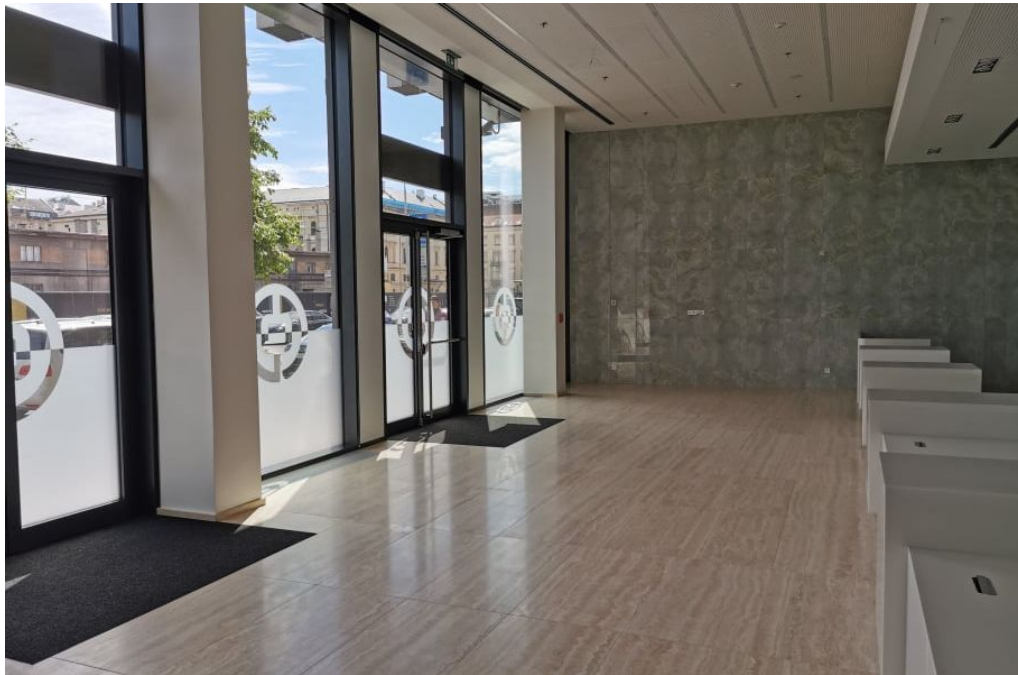


## Retail space

Rented

Prague 1, Nové Město, Na Florenci

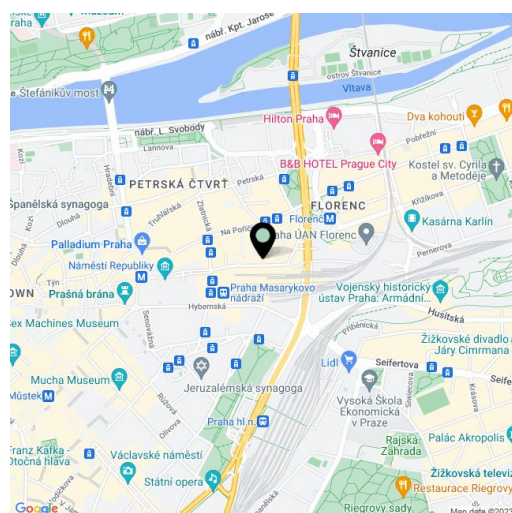


## Retail space

Rented

Prague 1, Nové Město, Na Florenci

<b>Service price</b>	95 CZK monthly per m <sup>2</sup>
<b>Available area</b>	249 m <sup>2</sup>
<b>Parking</b>	Yes
<b>PENB</b>	G
<b>Reference number</b>	41378



Retail space for lease in the attractive mixed-use office and retail complex. The complex is located in the center of Prague and consists of several buildings that are connected together through organically shaped ribbed towers. Within the complex is the Desfour Garden, a public square with greenery. The space is suitable for a furniture store, electro shop, luxury goods or a bank.

**Location:**

Excellent accessibility by public transport. It is located within a two-minute walk from the Náměstí Republiky (line B) and Florenc (line C) metro stations, the Náměstí Republiky/Bílá labuť tram stops, and the Masarykovo Railway Station..

**Features and services:**

- Central ventilation system
- Openable windows
- Warehouse space
- Ceiling height: 3 m
- Raised floors and lowered ceilings
- Fire protection
- Air-conditioned
- Cooling and heat convectors
- Wheelchair accessible building
- Security cameras
- Electronic security system
- Electronic fire prevention system
- Electricity generators (power source from two independent substations)
- Fiber optic cable from several operators

Rental and service charges listed without VAT. Lessee pays no commission.

PŮDORYS 1.NP - NAVRHOVANÝ STAV  
m1:100

