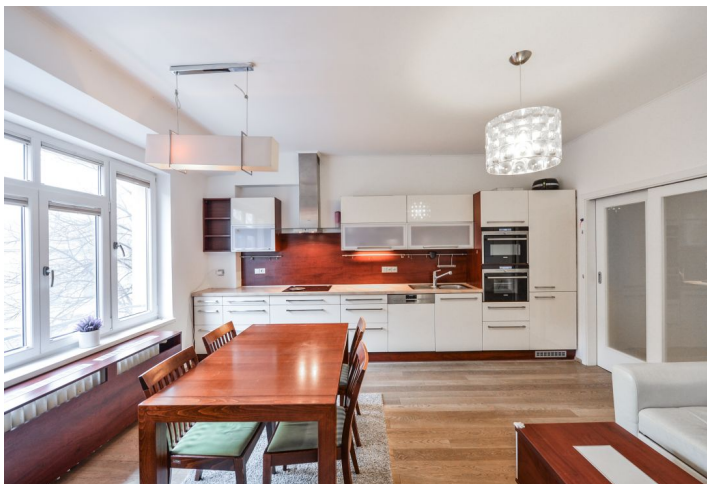


## Apartment Three-bedroom (4+kk)

Sold

86 m<sup>2</sup>, Prague 6, Dejvice, Generála Píky



## Apartment Three-bedroom (4+kk)

Sold

86 m<sup>2</sup>, Prague 6, Dejvice, Generála Píky

Total area	91 m <sup>2</sup>
Floor area*	86 m <sup>2</sup>
Balcony	2 m <sup>2</sup>
Loggia	3 m <sup>2</sup>
Parking	-
Cellar	-
Service price	4 891 CZK monthly
PENB	C
Reference number	41376

This sunny apartment with a balcony and a glazed loggia is located on the 2nd floor of a completely renovated classic apartment building with an elevator. The building is part of the elegant district of Prague 6 - Dejvice and is close to the metro station and tram stop on Vítězná Square and within walking distance of Prague Castle.

The apartment is conveniently divided into a living room with a kitchen, a study usable as a guest room or bedroom, another 2 bedrooms with windows towards the garden in the courtyard, a bathroom (with a bath and toilet), a separate toilet, and an entrance hall. The study has a south-facing balcony; one bedroom has a glazed loggia/winter garden.

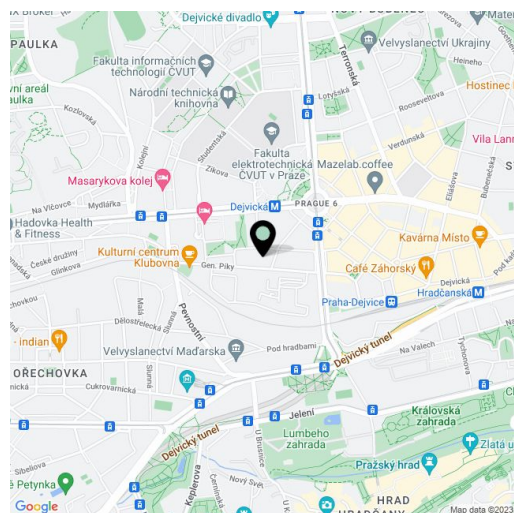
Facilities include **hardwood bleached oak floors**, quality plastic windows with interior blinds, a modern kitchen with **Siemens** appliances, built-in furniture, **Laufen and Kaldewei sanitary ware**, a **heated bathroom floor**, and cast iron radiators. Heating is remote. The apartment comes with a **cellar storage unit**. The building has been completely renovated (including electricity and gas distribution, risers, roof, insulation, etc.).

This attractive location next to the Ořechovka residential area offers a full-fledged infrastructure, which includes, for example, the international **Riverside School Prague Junior High**, university faculties, quality restaurants, cafés, and a traditional **farmers' market**. The district has convenient connections to the city center by subway, tram, and train. The drive to the airport is also fast. Within walking distance is **Prague Castle, the Deer Moat, the Royal Garden, Chotkovy Sady Garden**, or the new **Marie Terezie Park**.

Interior 86 m<sup>2</sup>, balcony 2.4 m<sup>2</sup>, loggia 2.5 m<sup>2</sup>, cellar about 5 m<sup>2</sup>.

The apartment is rented until the end of August 2022.

In addition to regular property viewings, we also offer real-time video viewings via WhatsApp, FaceTime, Messenger, Skype, and other apps.

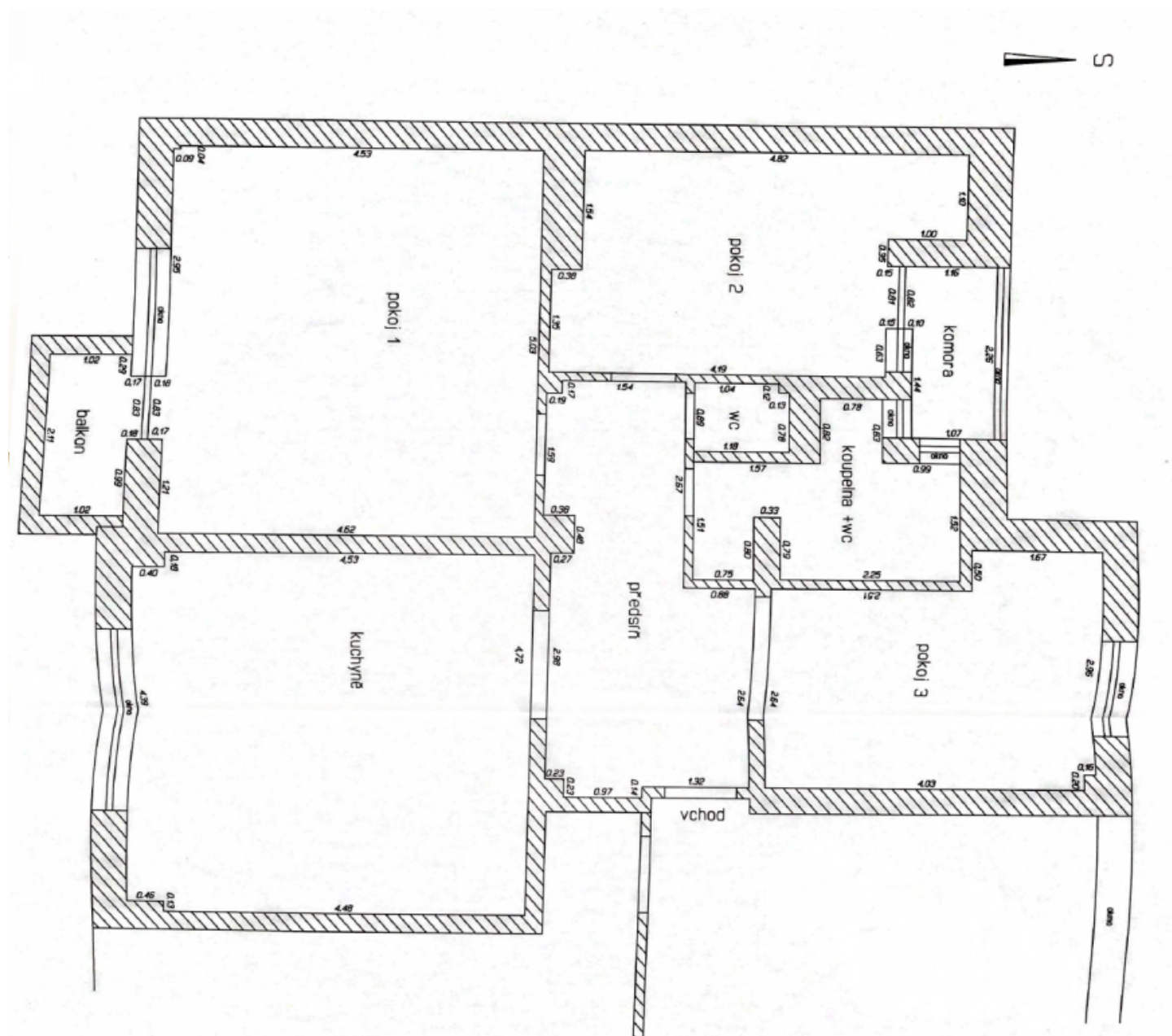


\* Area of the unit according to the Civil Code. The area consists of the sum total area of the entire unit bounded by perimeter walls.

# Apartment Three-bedroom (4+kk)

Sold

86 m<sup>2</sup>, Prague 6, Dejvice, Generála Píky



Generála Píky

pokoj 1	23,4 m <sup>2</sup>
pokoj 2	12,7 m <sup>2</sup>
pokoj 3	11,9 m <sup>2</sup>
kuchyně	23,1 m <sup>2</sup>
předstřn	11,1 m <sup>2</sup>
koupelna + WC	5,4 m <sup>2</sup>
WC	1,0 m <sup>2</sup>
komora	2,5 m <sup>2</sup>
<b>balkon</b>	<b>2,3 m<sup>2</sup></b>
<b>CELKEM</b>	<b>91,1 m<sup>2</sup></b>



mříčka : 1 : 50  
č.z. 1/2016  
vyhotovil: Ing. Jánková Marcela v roce 2016