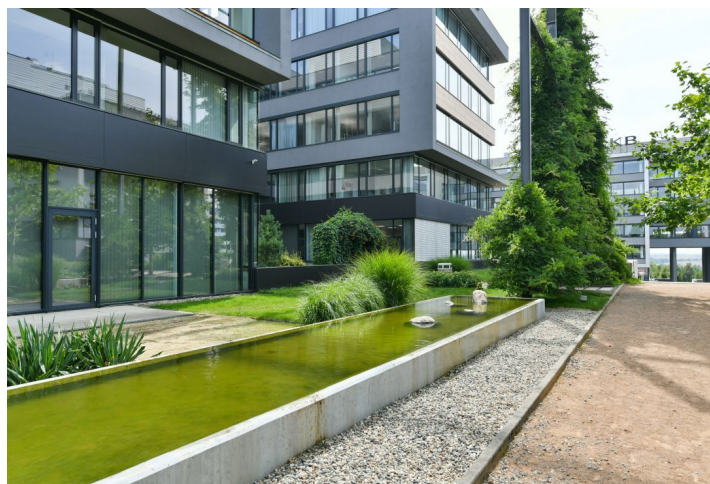
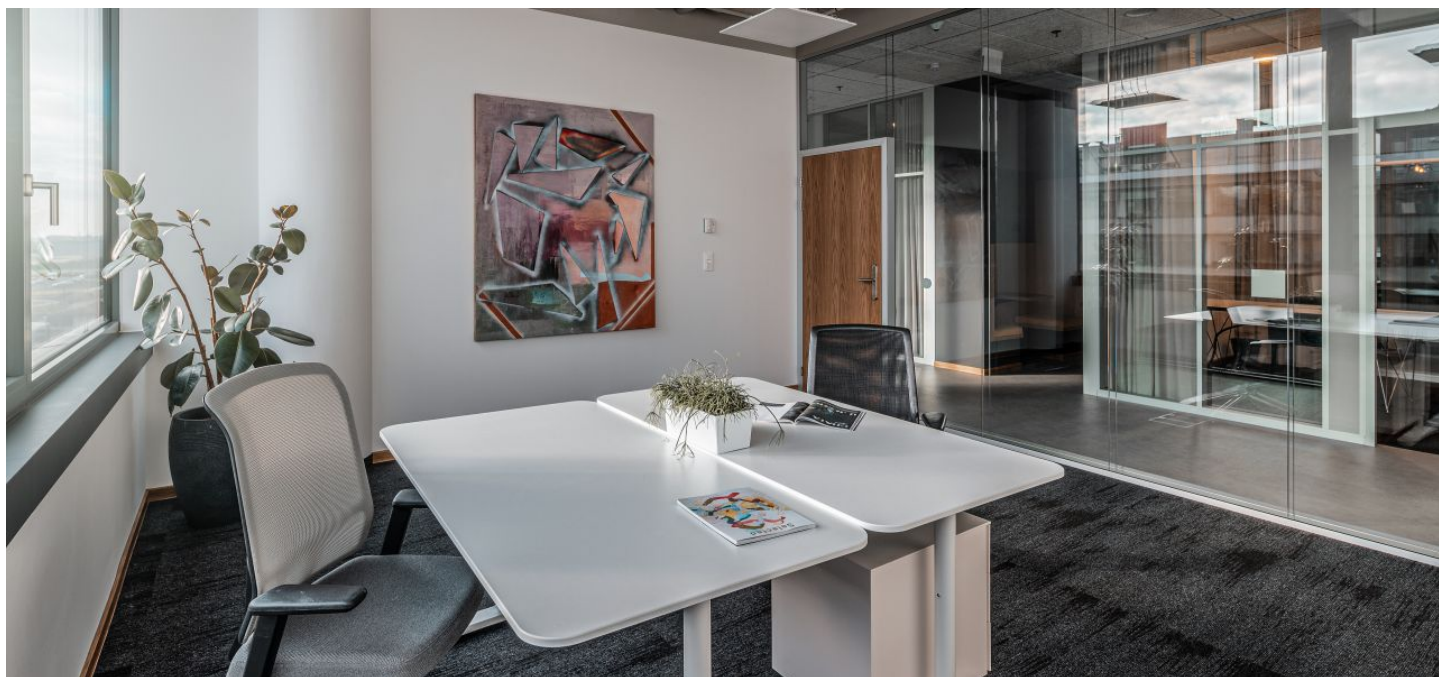


Office space

€ 24.60 / m² | CZK 615 / m²

Prague 5, Stodůlky, Siemensova

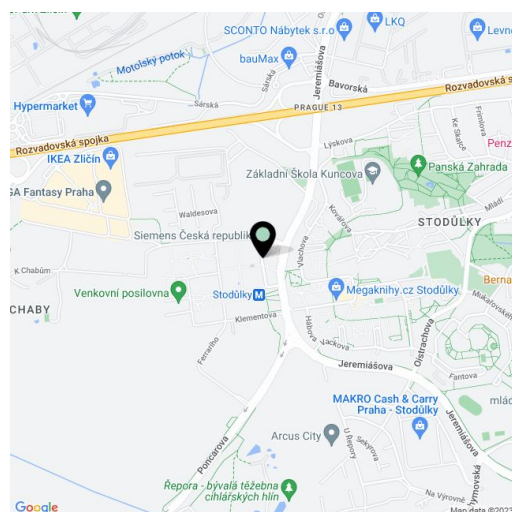


Office space

€ 24.60 / m² | CZK 615 / m²

Prague 5, Stodůlky, Siemensova

Service price	221 CZK monthly per m ²
Available area	56 m ²
Cellar	-
Parking	EUR 110 / ps / month
PENB	D
Reference number	41337



Fully furnished shared offices (from 9 sq. m.) with flexible lease terms located in a business district by the Stodůlky metro station.

Price per person in a private office from CZK 6,300 / month incl. services and furniture.

Fully equipped private office for 8 people with a net office unit area of 31.70 sq. m.

The total leasable area of the unit, including shared areas, is 55.75 sq.m.

West Flexi Offices are stylish, **fully furnished shared offices** that offer flexible lease terms. Whether you need a space for one hour, one day, a month, or many years, West Flexi Offices provides a solution for everyone. The project offers **private offices (from 9 sq. m. to 74 sq. m.), coworking space, a daily office, fully equipped conference rooms, and focus rooms** for quick meetings or phone calls.

Location:

West Flexi Offices are part of a modern multifunctional complex located in the West City, near the **Stodůlky metro station (line B)**. Easy access to the city center is ensured by public transport (15 minutes) as well as by car since you can easily get to the **Prague Ring Road**. The offices are therefore easily accessible via the D5 highway and from the Václav Havel airport.

There are complete civic amenities within the complex including plenty of restaurants, bistros, cafés, and an outside gym. The extensive, green **Central Park** is close-by and the **Metropole Zličín** and **Homepark Zličín** shopping centers are within walking distance.

West Flexi Offices services:

Daytime reception (from 8:30 a.m. to 6:30 p.m.)

Mail and parcel reception

39 equipped offices from 9 sq. m. to 74 sq. m.

Fully equipped conference rooms (available not only to tenants)

Focus rooms

Daily office

Coworking

Lounge and relaxation zones for clients

Furnished kitchenettes

Office furniture rental

Multifunctional printers

High-speed Wi-Fi secured by Fortinet

Shower on the same floor

Personal assistant services

IT support and legal advice

Office space

€ 24.60 / m² | CZK 615 / m²

Prague 5, Stodůlky, Siemensova

Service price	221 CZK monthly per m ²
Available area	56 m ²
Cellar	-
Parking	EUR 110 / ps / month
PENB	D
Reference number	41337

Facilities and City West B1 building standards:

Modern office building class "A"
 Reception by the building's entrance
 24/7 security
 Underground parking
 Electric charging stations
 Magnetic card access
 Raised floors
 Openable windows
 Outdoor blinds
 Warehouse space
 Form Factory fitness center
 Outside gym
 Bike parking

The West Flexi Offices price list includes the following services:**Private offices:**

Workspace from CZK 6,300/month incl. services and furniture

Coworking:

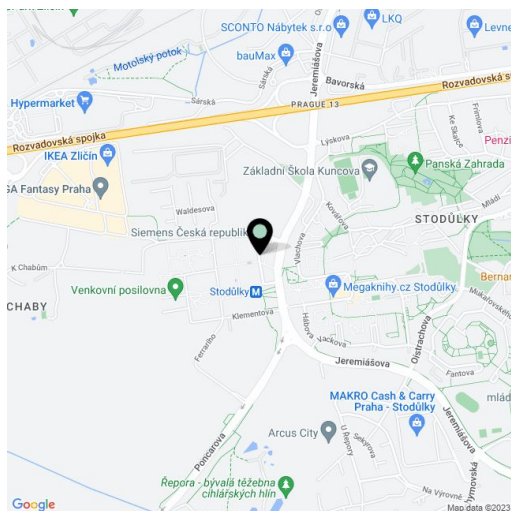
Hot desking CZK 300/day
 Hot desking 24/7 CZK 4,500/month

Conference rooms:

From CZK 150/hr.

Available immediately.

Lease and service charges listed without VAT. Lessee pays no commission.



Office space

€ 24.60 / m² | CZK 615 / m²

Prague 5, Stodůlky, Siemensova

