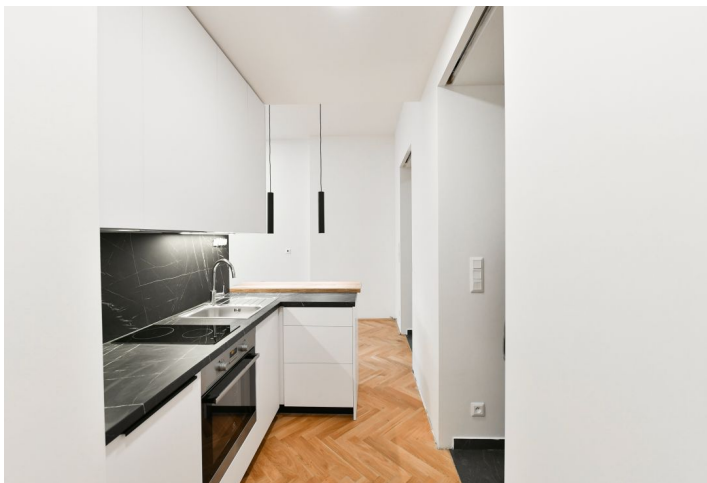


## Apartment One-bedroom (2+kk)

Rented

51.4 m<sup>2</sup>, Prague 2, Vinohrady, Italská



## Apartment One-bedroom (2+kk)

Rented

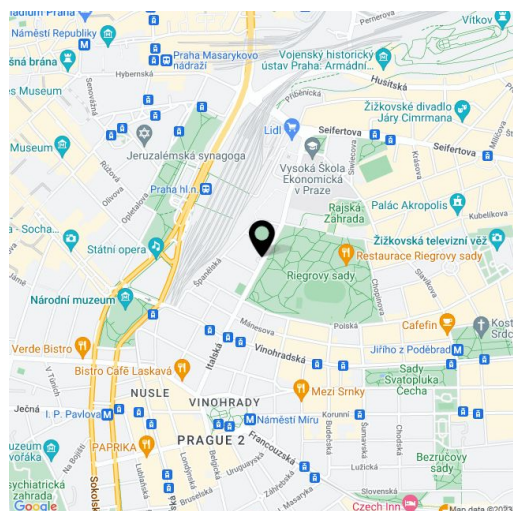
51.4 m<sup>2</sup>, Prague 2, Vinohrady, Italská

Total area	54 m <sup>2</sup>
Floor area*	51 m <sup>2</sup>
Balcony	3 m <sup>2</sup>
Parking	-
Cellar	Yes
Service price	Monthly deposit for services and water CZK 3,000. Electricity - transferred to the tenant.
PENB	E
Reference number	41331
Available from	Immediately

This unfurnished designer apartment with a balcony on the 1st floor of a renovated historic building with an elevator and preserved original details is set on a tree-lined street just moments from the Náměstí Míru and I.P. Pavlova metro stations with multiple tram links, and a wide range of amenities including numerous restaurants, cafes, and bistros in the immediate vicinity. Conveniently located just a short walk from the very city center - Wenceslas Square and Muzeum metro station, and a few blocks from popular Riegrovy Sady Park.

The interior features a living room with a fully fitted open plan kitchen and balcony facing the quiet green courtyard, a bedroom furnished with a wardrobe and separated by sliding doors, a study area, a shower bathroom with a bidet and toilet, plus an entrance hall.

Hardwood parquet floors, tiles, security entry door, electric boiler, Sykora kitchen, dishwasher, induction cooktop, cellar.



\* Area of the unit according to the Civil Code. The area consists of the sum total area of the entire unit bounded by perimeter walls.

## Apartment One-bedroom (2+kk)

Rented

51.4 m<sup>2</sup>, Prague 2, Vinohrady, Italská

01	Chodba	6,58 m <sup>2</sup>
02	Obývací pokoj + kuch. kout	21,85 m <sup>2</sup>
03	Ložnice s šatnou	13,60 m <sup>2</sup>
04	Koupelna	5,99 m <sup>2</sup>
05	Lodžie	2,60 m <sup>2</sup>
06	Sklepní kóje	2,10 m <sup>2</sup>
Celková hrubá plocha skl. kóje a lodžie		56,4 m <sup>2</sup>
Orientace		jihovýchodní

