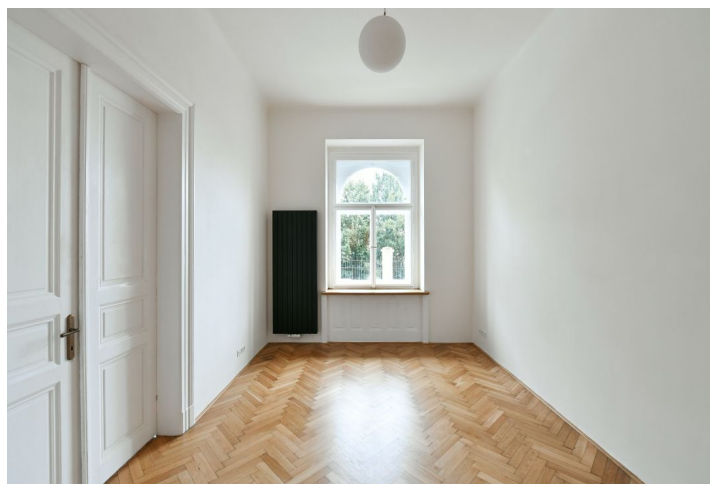
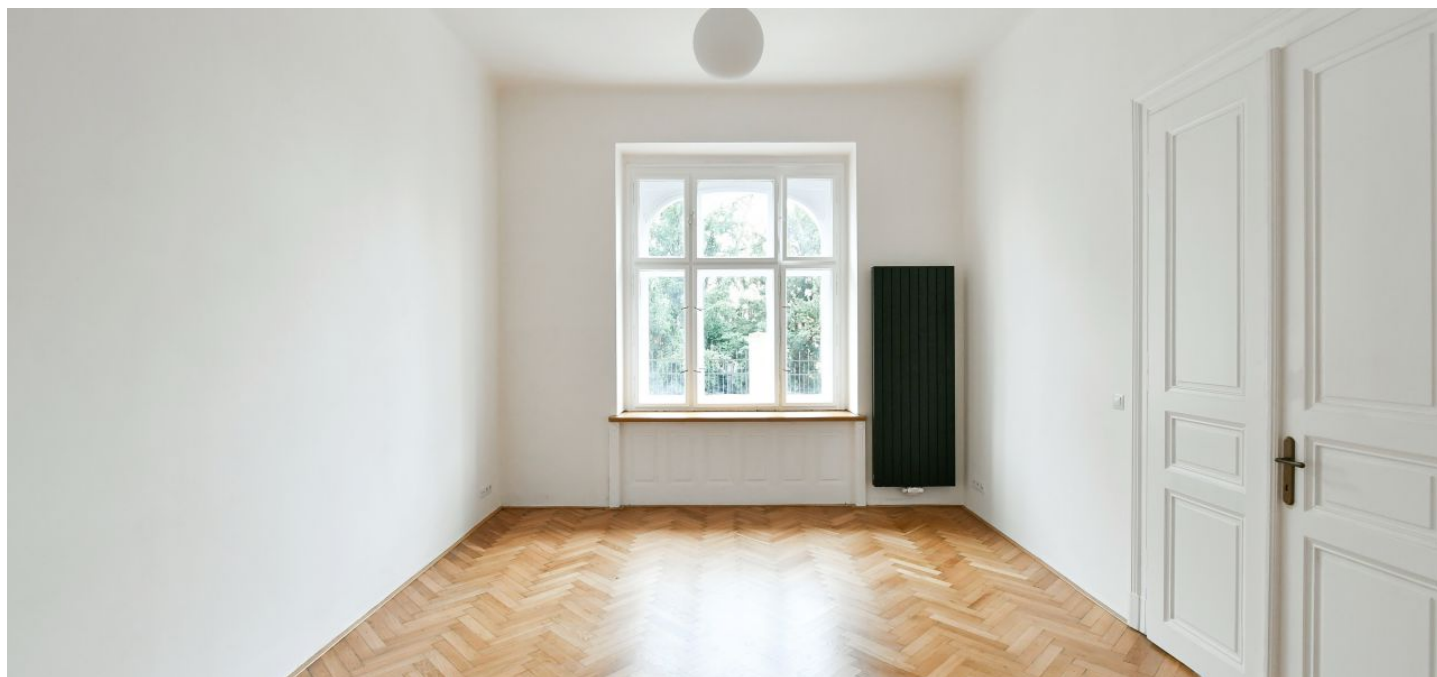


Apartment One-bedroom (2+kk)

Rented

65 m², Prague 2, Vinohrady, U Havlíčkových sadů



Apartment One-bedroom (2+kk)

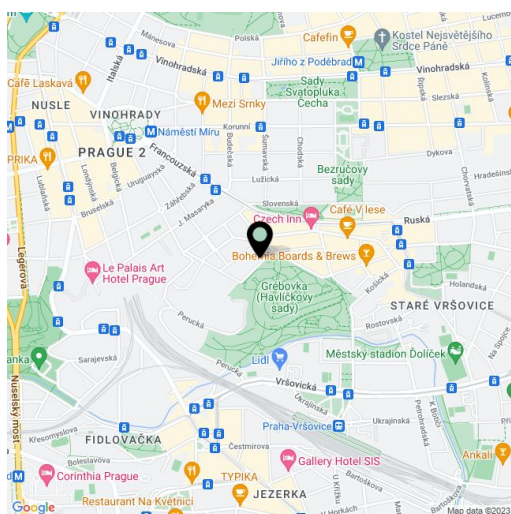
Rented65 m², Prague 2, Vinohrady, U Havlíčkových sadů

Total area	65 m ²
Parking	-
Cellar	Yes
PENB	G
Reference number	41177
Available from	Immediately

Boasting a unique location offering direct views of the adjacent Havlíčkovy Sady Park, this is a newly refurbished 1-bedroom apartment. Situated on the upper ground floor of a renovated residential building with preserved original details and a shared courtyard garden. Well located in a quiet street in a highly sought after neighborhood on the border of Vinohrady and Vršovice districts, with quick connections to the city center, and convenient to Náměstí Míru metro station, line A, with full amenities in the area.

The interior features an entrance hall with a fully fitted kitchen, a living room, a bedroom, a bathroom including a bathtub, a separate toilet, and a utility room.

Newly renovated **solid wood parquet floors**, tiles, gas boiler, dishwasher, induction cooktop, **cellar**. Service charges and water bills: CZK 700/person/month. Gas and electricity will be transferred to the tenant.



* Area of the unit according to the Civil Code. The area consists of the sum total area of the entire unit bounded by perimeter walls.

Apartment One-bedroom (2+kk)

Rented

65 m², Prague 2, Vinohrady, U Havlíčkových sadů

