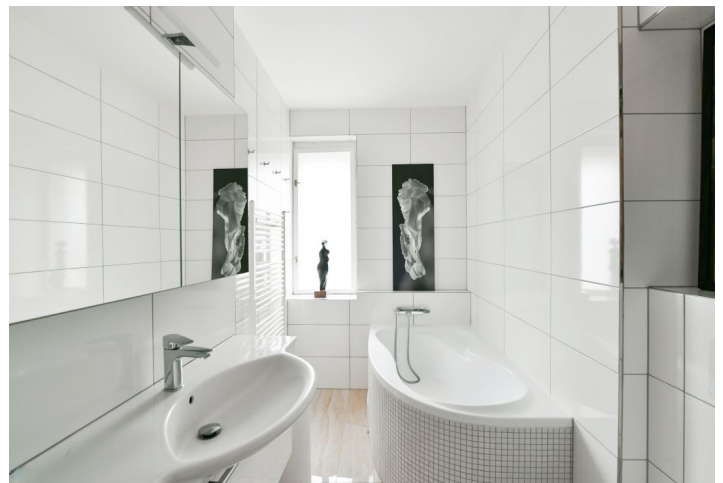


## Apartment Two-bedroom (3+kk)

Rented

90 m<sup>2</sup>, Prague 10, Strašnice, Běchovická



## Apartment Two-bedroom (3+kk)

Rented

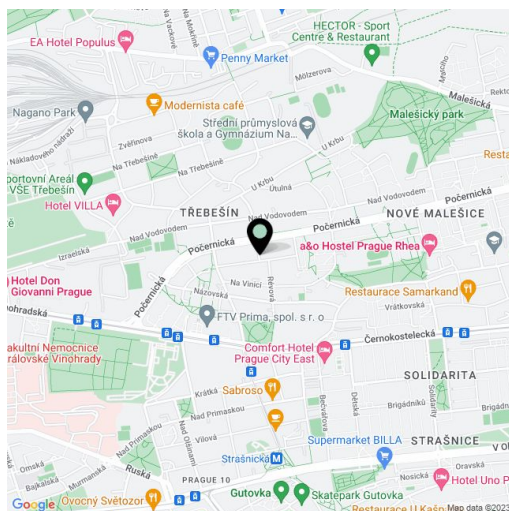
90 m<sup>2</sup>, Prague 10, Strašnice, Běchovická

Total area	118 m <sup>2</sup>
Floor area*	90 m <sup>2</sup>
Terrace	28 m <sup>2</sup>
Parking	Parking on the plot.
Cellar	-
Service price	Deposit for common building charges and utilities CZK 10,000.
PENB	G
Reference number	41176
Available from	Immediately

Benefiting from a 28 sq. m. terrace, this furnished apartment is on the 1st floor of a residential villa in a quiet and green residential neighborhood in Strašnice, with full amenities within easy reach and quick access to the city center, within walking distance of the Strašnická and Želivského metro stations, Malešický Park, and Malešický Forest. Minutes from tram and bus stops, Ivana Jilemnického Park, sports facilities, and playgrounds.

The interior features a living room with a large terrace, a fully fitted kitchen with a dining area, two bedrooms, plus a bathroom with a bathtub and toilet.

Hardwood parquet floors, tiles, carpets in the bedrooms, double-sided fireplace, blinds, central heating, washer, dryer, dishwasher, microwave oven, American type fridge, TV, Wi-Fi O2 Internet. A parking space on the plot is included.



\* Size of the unit according to the Housing Act.

The area consists of the sum total of the internal area of every room.