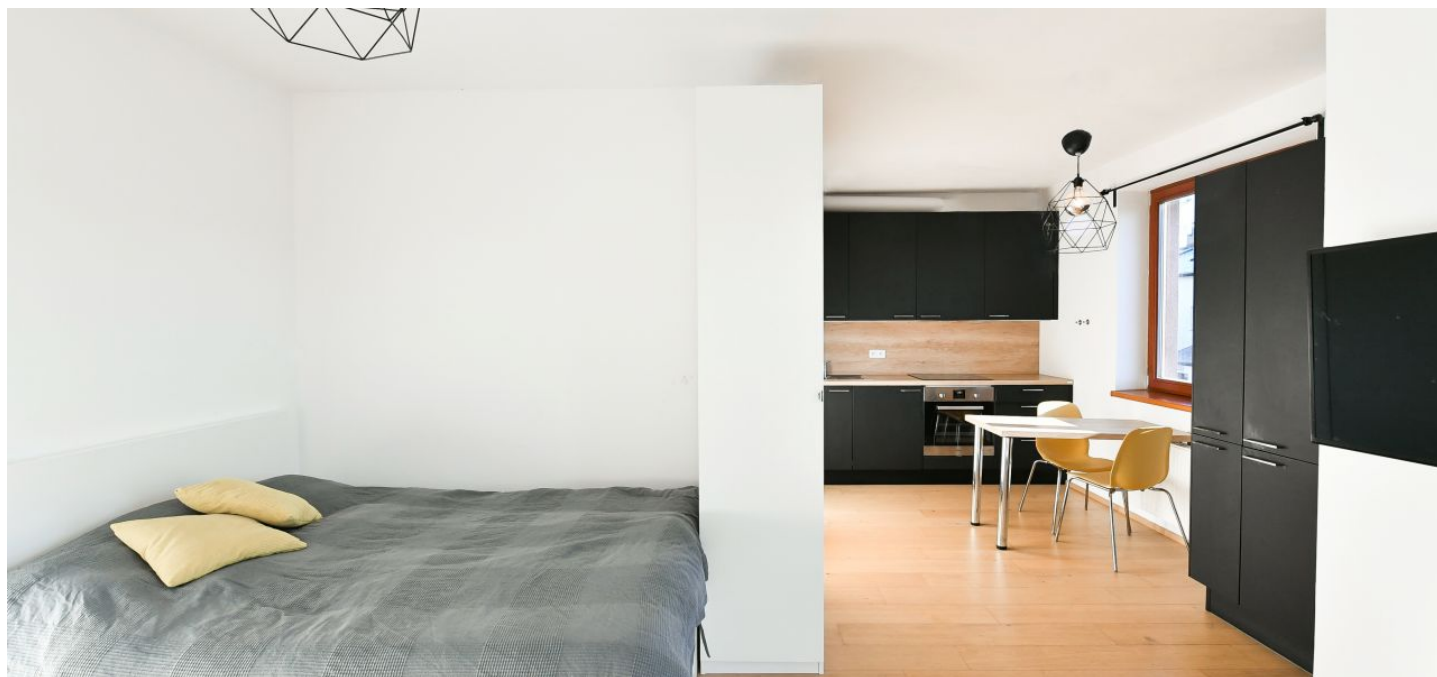


## Apartment Studio (1+kk)

Sold

31 m<sup>2</sup>, Prague 5, Řepy, Žalanského

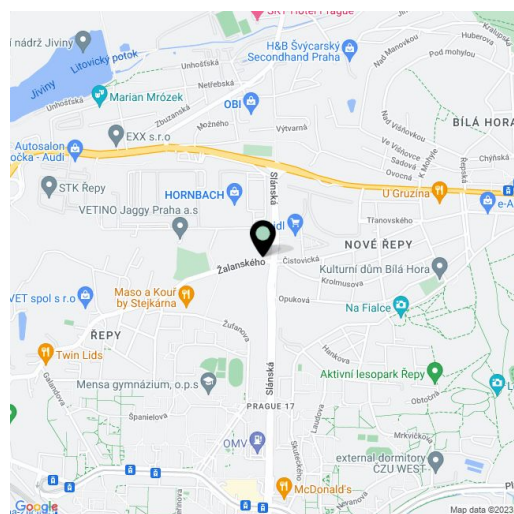


## Apartment Studio (1+kk)

**Sold**

31 m<sup>2</sup>, Prague 5, Řepy, Žalanského

Total area	31 m <sup>2</sup>
Parking	-
Cellar	Yes
PENB	C
Reference number	41149



\* Area of the unit according to the Civil Code. The area consists of the sum total area of the entire unit bounded by perimeter walls.

This modern, bright studio is located on the 1st floor of an apartment building with only 11 units on a nice, quiet street in the impressive oldest part of Řepy near the Romanesque Church of St. Martin.

The interior consists of a living room connected with a kitchen, a foyer, and a bathroom.

The three-story apartment building was approved in 2019. Floors and windows are **wooden**, the kitchen is by Oresi, and the bathroom is beautifully modern with Duravit fittings. The purchase price includes all of the furniture and facilities shown in the photographs. Central heating. Residents can use the pram room with a drying area. It is possible to **purchase a cellar storage unit**.

The building is located right next to a bus stop and the Petřiny metro station is about a quarter of an hour away. You can walk to a tram stop in about 10 minutes. Several restaurants, a supermarket, and a hobby market are nearby you can easily reach **Bílá Hora Hill, the Hvězda Game Reserve, or the Active Řepy Forest Park** on foot.

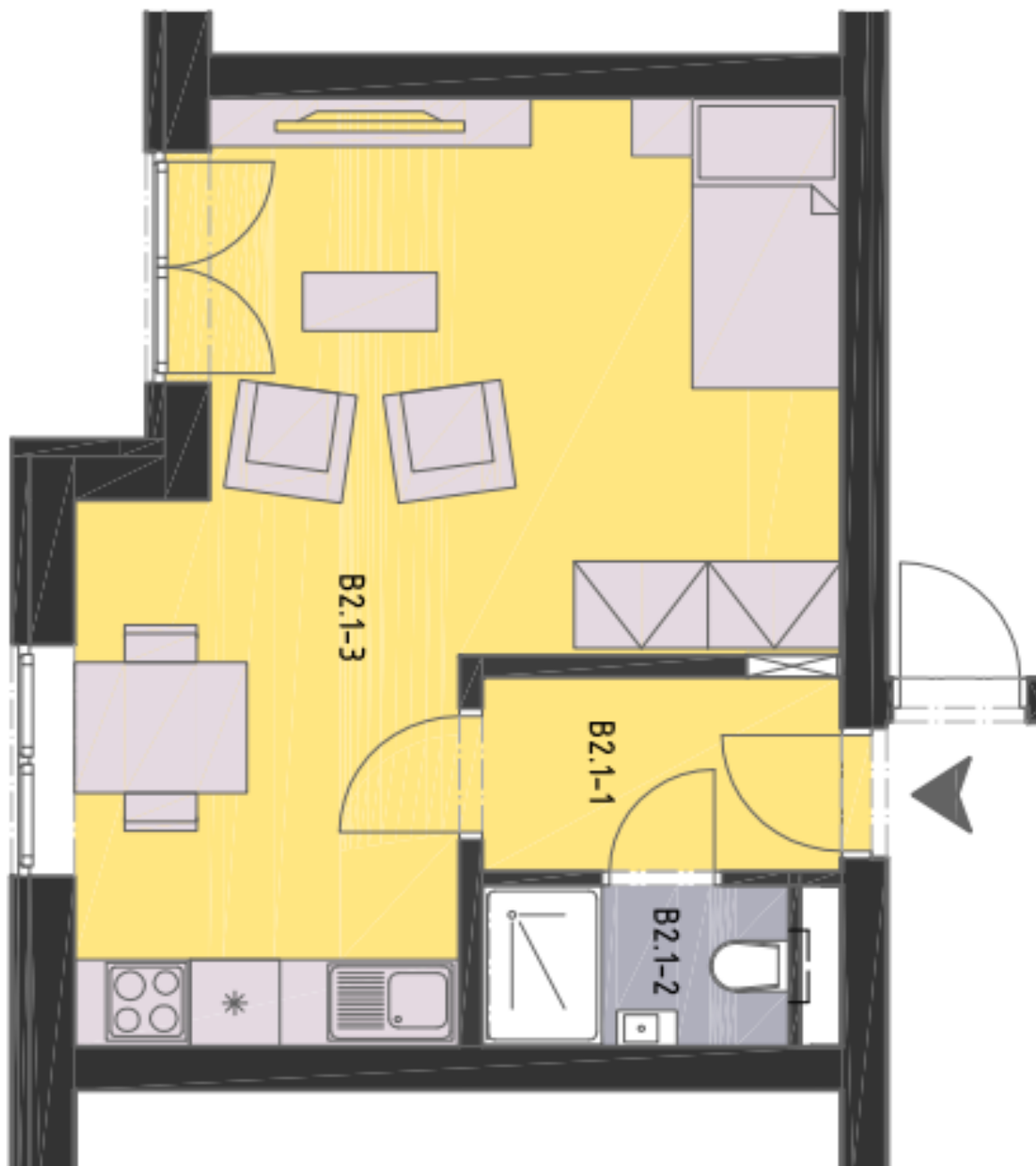
Interior 30.8 m<sup>2</sup>.

In addition to regular property viewings, we also offer real-time video viewings via WhatsApp, FaceTime, Messenger, Skype, and other apps.

## Apartment Studio (1+kk)

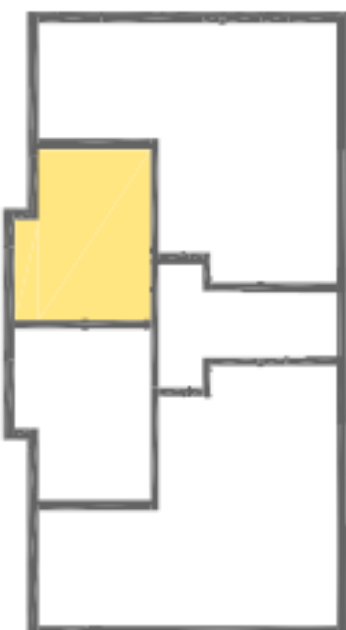
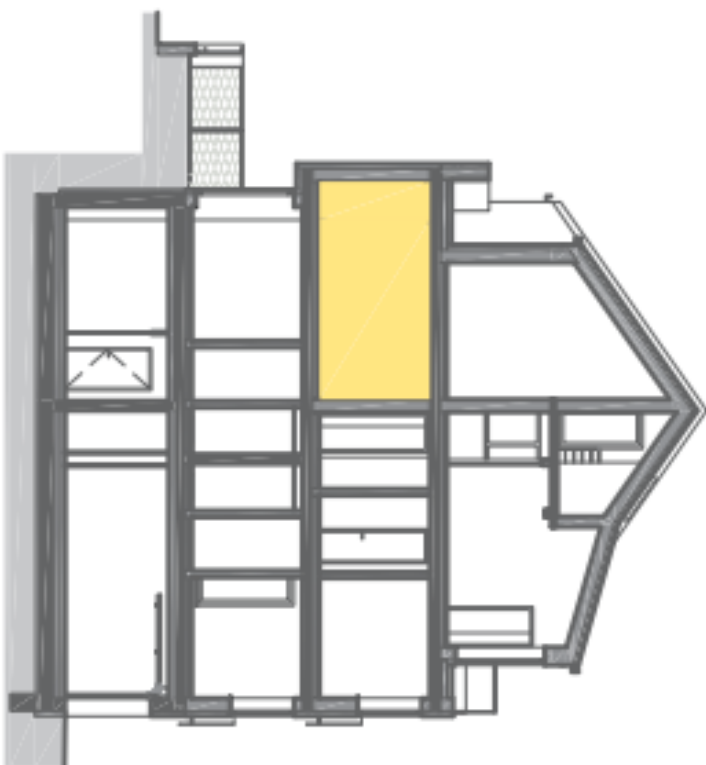
Sold

31 m<sup>2</sup>, Prague 5, Řepy, Žalanského



## Apartment Studio (1+kk)

Sold

31 m<sup>2</sup>, Prague 5, Řepy, Žalanského**Celková podlahová plocha / Gross Area 30,8m<sup>2</sup>**

Plocha bytu dle NV č.366/2013/ Flat area according to NV č.366/2013

<b>B2.1-1</b>	<b>Chodba / Corridor</b>	<b>3,1 m<sup>2</sup></b>
<b>B2.1-2</b>	<b>Koupelna / Bathroom</b>	<b>2,2 m<sup>2</sup></b>
<b>B2.1-3</b>	<b>Obývací pokoj / Living room</b>	<b>23,9 m<sup>2</sup></b>