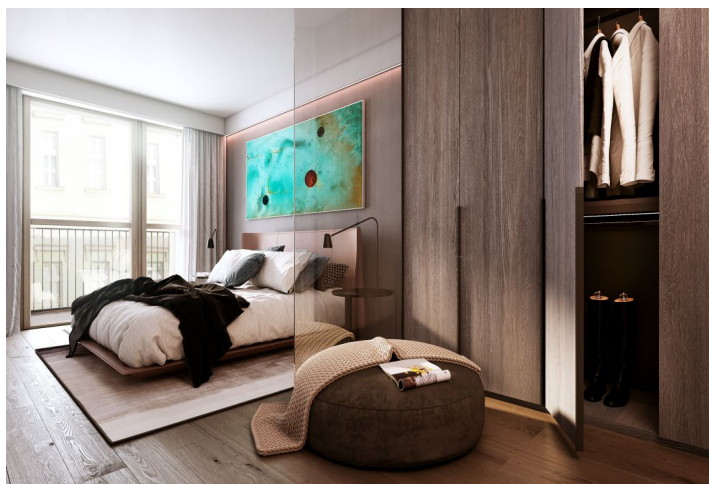
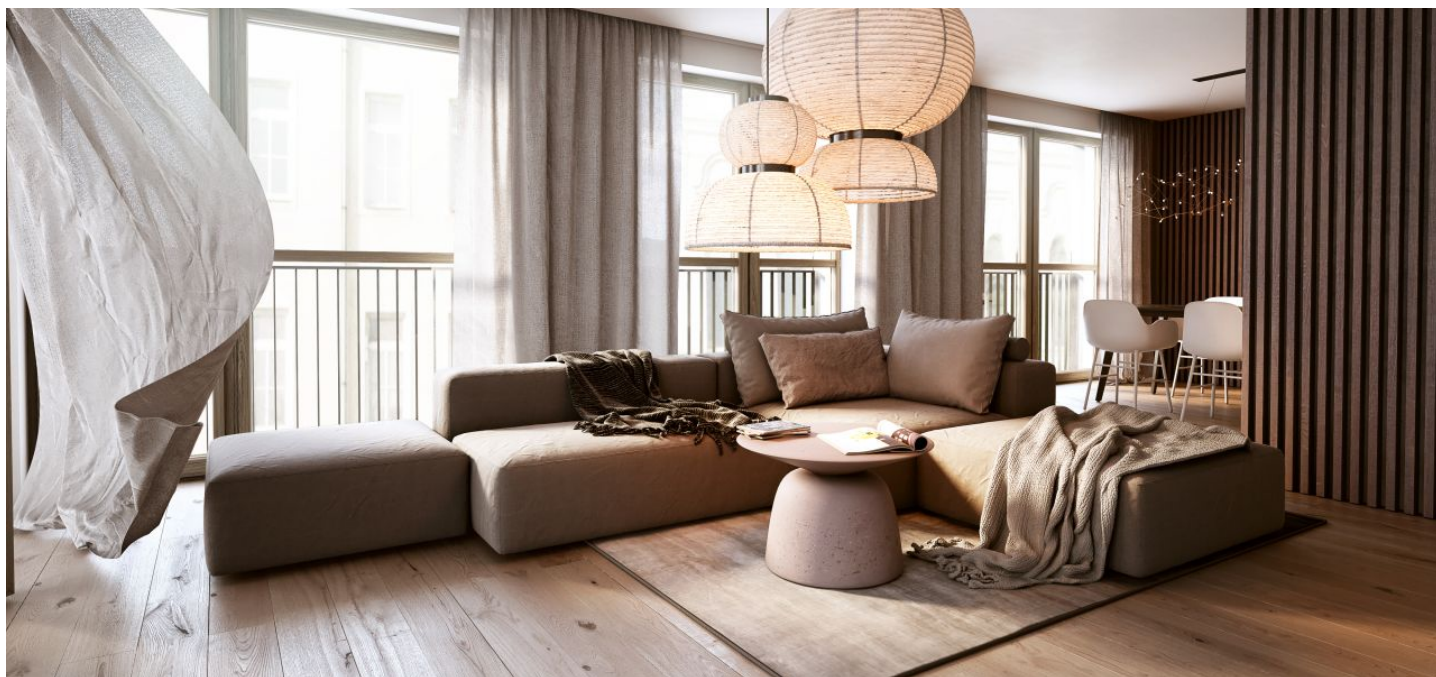


## Apartment One-bedroom (2+kk)

Sold

81 m<sup>2</sup>, Ostrava-město, Moravská Ostrava, Masarykovo náměstí



## Apartment One-bedroom (2+kk)

Sold

81 m<sup>2</sup>, Ostrava-město, Moravská Ostrava, Masarykovo náměstí

Total area	87 m <sup>2</sup>
Floor area*	81 m <sup>2</sup>
Loggia	6 m <sup>2</sup>
Parking	Parking space at extra cost
Cellar	Yes
PENB	B
Reference number	41053

This bright apartment with a loggia and the possibility of purchasing a garage parking space is part of the unique **Nové Lauby** residential complex. This new project is being created right in the center of Ostrava near Masaryk Square with a fountain, within walking distance of a full range of services and a park. The estimated completion date is Q4 2023.

The layout consists of a living room with a preparation for a kitchen, a bedroom, a bathroom with a toilet, and an entrance hall. The loggia is accessible both from the living room and the bedroom.

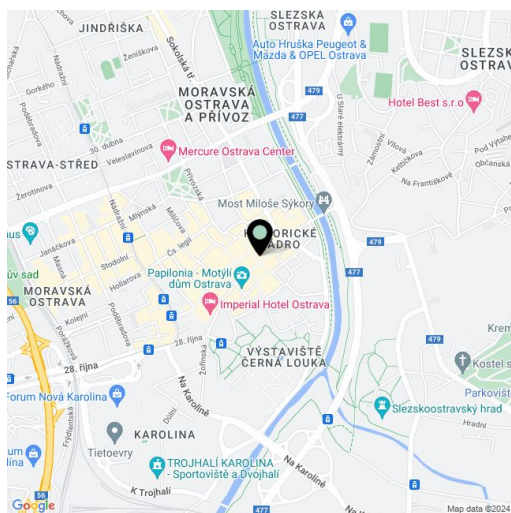
The project was designed by the renowned **Znamení čtyř - architekti studio**. The new five-story building will be covered with **greenery**, and a **landscaped atrium** will be created in the complex's center. The interior is illuminated by large-format windows with aluminum or wooden frames and the standard of equipment is offered in two options. There is a possibility to buy a **parking space**.

The apartment complex will become a natural part of the historic center of Ostrava. In the area around Masaryk Square, you can enjoy cafes, restaurants, a shopping center, a museum, a cinema, or a library. Schools and the Antonín Dvořák Theater are a few minutes' walk away. Part of the city monument zone is the **large park** on **Černá Louka** and the Ostravice River is lined with **bike paths**.

Floor area 74,73 m<sup>2</sup>, loggia 5.84 m<sup>2</sup>, cellar 2.18 m<sup>2</sup>.

The visualizations are of an illustrative nature only.

For more information about the project, visit the website



\* Area of the unit according to the Civil Code. The area consists of the sum total area of the entire unit bounded by perimeter walls.