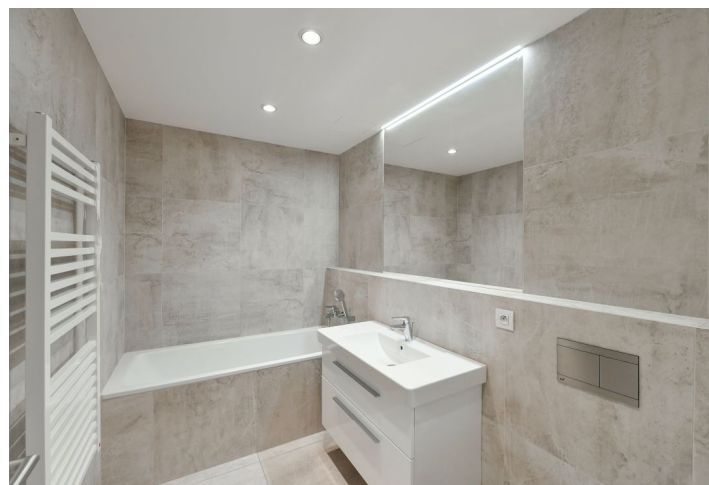


## Apartment Two-bedroom (3+kk)

Rented

108 m<sup>2</sup>, Prague 4, Podolí, Na Hřebenech II



## Apartment Two-bedroom (3+kk)

Rented

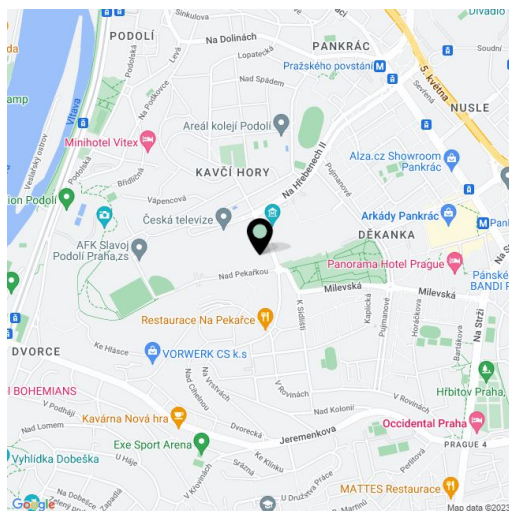
108 m<sup>2</sup>, Prague 4, Podolí, Na Hřebenech II

Total area	116 m <sup>2</sup>
Floor area*	108 m <sup>2</sup>
Terrace	8 m <sup>2</sup>
Parking	Two garage parking spaces.
Garage	Yes
Cellar	Yes
Service price	Monthly deposit for services, water, and heating: CZK 8,500. Electricity is billed separately.
PENB	B
Reference number	40911
Available from	Immediately

Boasting beautiful views of Prague incl. the Prague Castle and Petřín Hill, this comfortable unfurnished 2-bedroom 2-bathroom apartment with a terrace is situated on the 3rd floor with an elevator in the modern Castle View Residence, with underground parking, a reception, and 24/7 security. Set in a quiet area next to the Czech TV grounds, with two parks in close vicinity, about a five-minute walk from the Pražského povstání metro station (line C). Conveniently located for rich amenities and the Prague 4 international schools.

The interior features a living room with a fully fitted open plan kitchen, access to the **terrace**, and beautiful views of Prague, two bedrooms with built-in wardrobes, an en-suite bathroom (walk-in shower, toilet), a family bathroom (bathtub, toilet), and an entrance hall with a fitted **walk-in closet**.

Quality materials and finishes, built-in storage, floating **wooden floors**, tiles, automatic exterior blinds, underfloor heating in the bathrooms, **Miele** appliances, washer, dishwasher, induction cooktop, microwave oven, video entry phone, **cellar**. **Two garage parking spaces** are included.



\* Area of the unit according to the Civil Code. The area consists of the sum total area of the entire unit bounded by perimeter walls.

## Apartment Two-bedroom (3+kk)

Rented

108 m<sup>2</sup>, Prague 4, Podolí, Na Hřebenech II

Plocha bytu Terasa (Lodžie)	107,8 m <sup>2</sup> 8,30 m <sup>2</sup>
<b>MÍSTNOSTI</b>	
1) Chodba + šatna	13,4 m <sup>2</sup>
2) Ložnice	17,6 m <sup>2</sup>
3) Koupelna + WC	3,7 m <sup>2</sup>
4) Ložnice	13,5 m <sup>2</sup>
5) Obývací pokoj + KK	54,2 m <sup>2</sup>
6) Koupelna + WC	5,4 m <sup>2</sup>
7) Terasa (Lodžie)	8,30 m <sup>2</sup>
Parkovací stání Sklep	č. 2, č. 3 č. 46

