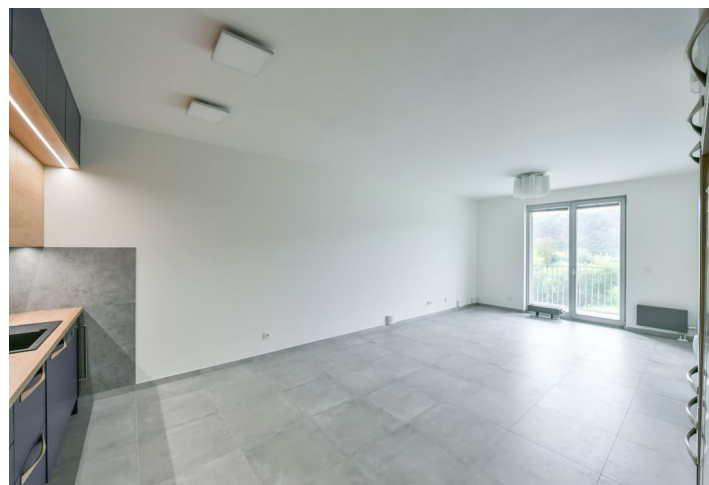


## Apartment One-bedroom (2+kk)

Rented

66.3 m<sup>2</sup>, Prague 4, Modřany, Mezi Vodami



## Apartment One-bedroom (2+kk)

Rented

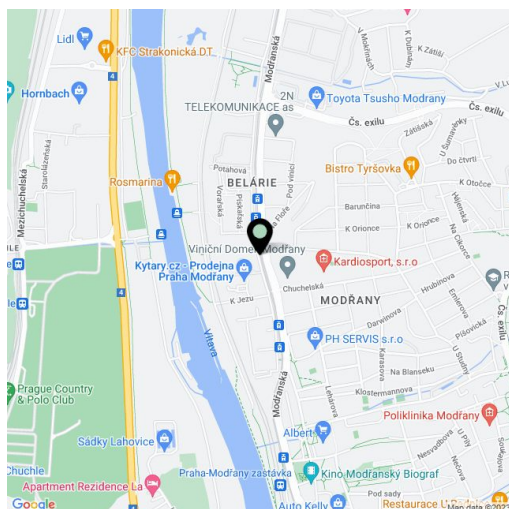
66.3 m<sup>2</sup>, Prague 4, Modřany, Mezi Vodami

Total area	83 m <sup>2</sup>
Floor area*	66 m <sup>2</sup>
Terrace	16 m <sup>2</sup>
Parking	Garage parking.
Garage	Yes
Cellar	-
PENB	B
Reference number	40703
Available from	Immediately

This is a contemporary 1-bedroom apartment with a terrace and beautiful views of the surrounding greenery and the adjacent Hodkovičky golf course, on the 4th floor of a new building, part of a residential complex with a public park in Modřany, Prague 4. The location is undergoing gradual revitalization and transformation into a modern district with full services. A freestyle park, a rope center and a bike path (20 minutes to the Výtoň riverbank, 25 minutes to the city center) are in the immediate vicinity. A tram stop with frequent connections to the city center is an 8-minute walk away.

The apartment includes a living room with a fully fitted open kitchen, a bedroom with a built-in wardrobe, a large bathroom with a bathtub, a walk-in shower and a toilet, and an entrance hall with a built-in wardrobe and storage space. Both rooms have access to the **terrace**.

**Heat recovery ventilation**, large format tile floors throughout, underfloor heating in the bathroom, pleated blinds, dishwasher, induction cooktop, American type fridge, wine fridge, storage space on the terrace. Bike and pram storage room plus a lobby with a sitting area in the building. A **garage parking** space is included. Monthly deposit for service charges, water and heating: CZK 3,500. Electricity is billed separately.



\* Area of the unit according to the Civil Code. The area consists of the sum total area of the entire unit bounded by perimeter walls.

# Apartment One-bedroom (2+kk)

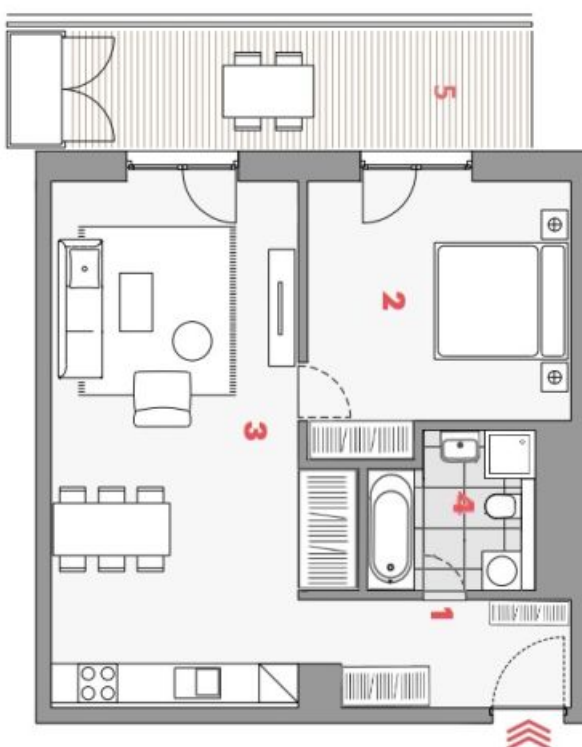
66.3 m<sup>2</sup>, Prague 4, Modřany, Mezi Vodami

Rented

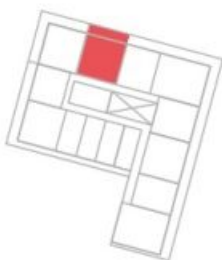


TYP • TYPE **2+KK**  
 PODLAHOVÁ PLOCHA M<sup>2</sup> • APT. AREA M<sup>2</sup> **66,3**  
 NADZEMNÍ PODLAŽÍ • FLOOR **4**

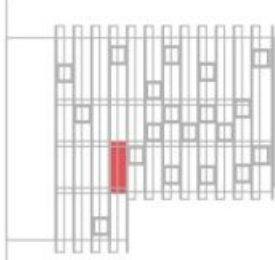
1	předstěn • entrance	6,6 m <sup>2</sup>
2	ložnice • bedroom	16,1 m <sup>2</sup>
3	obývací pokoj + kk • living room + kc	31,9 m <sup>2</sup>
4	koupelna • bathroom	6,3 m <sup>2</sup>
—	obýtná plocha • living area	60,9 m <sup>2</sup>
—	světlo konstrukce • vertical structures	5 m <sup>2</sup>
—	podlahová plocha • apartment area	<b>66,3 m<sup>2</sup></b>
5	balkon • balcony	16,2 m <sup>2</sup>
—	plocha bytu celkem • apart. area total	<b>82,5 m<sup>2</sup></b>



LOKALITA LOCATION



PLAN PODLAŽÍ FLOOR PLAN



POHLED NA DŮM BUILDING VIEW