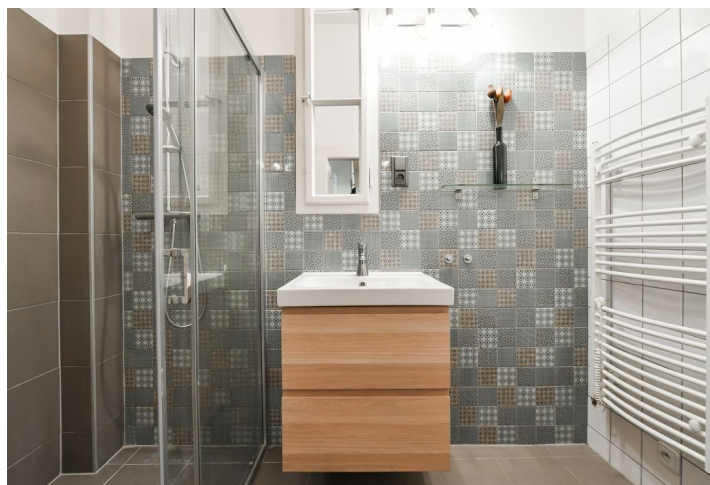
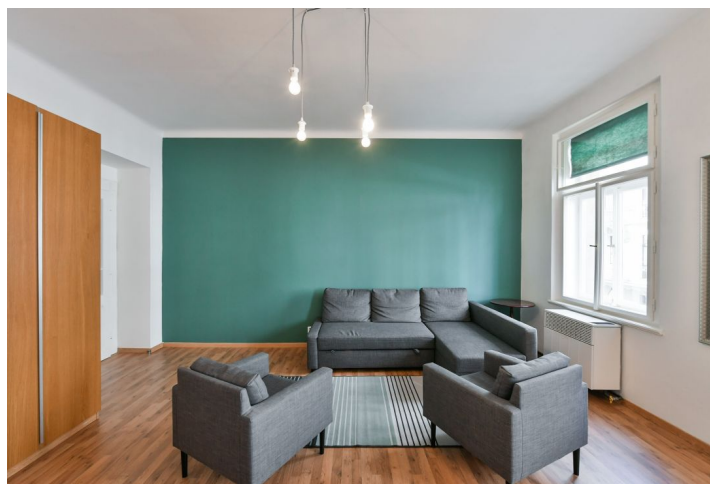


## Apartment One-bedroom (2+kk)

Rented

62 m<sup>2</sup>, Prague 10, Vršovice, Bulharská



## Apartment One-bedroom (2+kk)

Rented

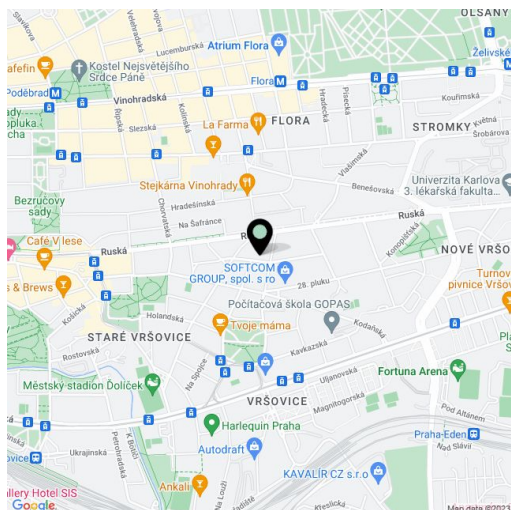
62 m<sup>2</sup>, Prague 10, Vršovice, Bulharská

Total area	62 m <sup>2</sup>
Parking	-
Cellar	-
Service price	Monthly deposit for service charges and water consumption: CZK 1,070. Gas and electricity are billed separately (transfer to the tenant).
PENB	G
Reference number	40484
Available from	Immediately

This is a renovated 1-bedroom apartment on the first floor of a traditional residential building with no lift. Located on a quiet street on the border of Vinohrady and Vršovice districts, in close vicinity of the Heroldovy sady and Svatopluka Čecha parks. Location with a full spectrum of amenities in the area and quick access to the city center by tram and bus, only a few stops away from the Náměstí Míru and I.P. Pavlova metro stations.

The apartment offers an entrance hall including a fitted kitchen and a pantry / storage room, a living room, a bedroom, plus a shower room with a toilet.

Laminated floors, tiles, gas heating, electric boiler for hot water, washing machine, microwave oven. Monthly deposit for service charges and water consumption: CZK 1,070. Gas and electricity are billed separately (transfer to the tenant).



\* Area of the unit according to the Civil Code. The area consists of the sum total area of the entire unit bounded by perimeter walls.