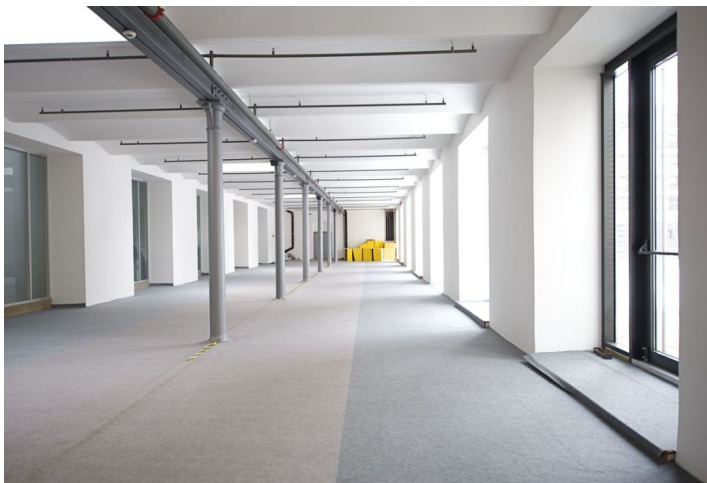


Office space

Rented

Prague 7, Holešovice, U Průhonu



Office space

Rented

Prague 7, Holešovice, U Průhonu

Service price	105 CZK monthly per m ²
Available area	286 m ²
Cellar	-
Parking	EUR 100 / pp / month
PENB	G
Reference number	40482

Office space for lease on the 1st floor in modern office complex consisting of four buildings in a lucrative area of Prague 7 in Holešovice. The reconstructed buildings of a former brewery a 2 new buildings together create an architecturally unique complex that combines modern administrative and retail space with late 19th century architectural elements.

Location:

Good transport links - 5 minutes by tram to the Nádraží Holešovice, Vltavská (line C) or Palmovka (line B) metro stations and near the U Průhonu, Dělnická, Maniny, and Ortenovo náměstí tram stops.

Features and services:

- Partly raised floor
- Heating
- Air conditioning
- Radiators and fans
- Backup power source
- Wheelchair accessible elevators (with the exception of Building A)
- Kitchen
- Sanitary facilities
- Security

Available from 1st May 2023.

Rental and service charges listed without VAT. Lessee pays no commission.

