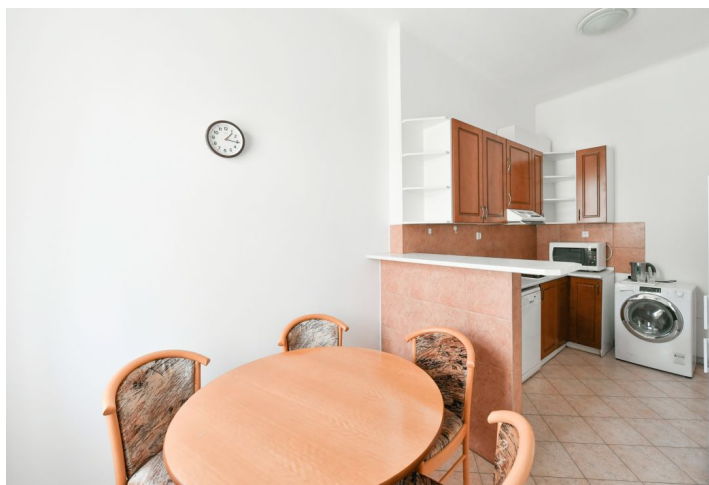


Apartment Two-bedroom (3+1)

€ 1 240 | CZK 31 000

104 m², Prague 2, Nové Město, Rašínovo nábřeží



Apartment Two-bedroom (3+1)

€ 1 240 | CZK 31 000

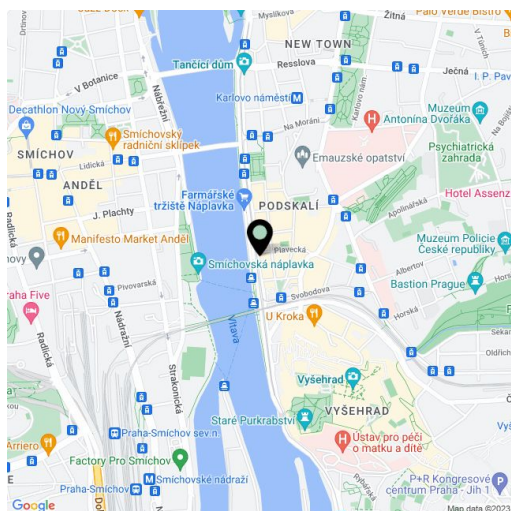
104 m², Prague 2, Nové Město, Rašínovo nábřeží

Total area	104 m ²
Parking	-
Cellar	-
Service price	Services, utilities, air-conditioning, Internet: CZK 10,000 per month.
PENB	G
Reference number	40423
Available from	Immediately

Boasting beautiful views of the Vltava River, Petřín Hill, and Prague Castle, this fully-furnished renovated riverfront apartment with preserved original details is situated on the 4th floor of a refurbished Art Nouveau building with an elevator right on the Vltava riverbank, near Vyšehrad Castle, moments from Palackého Square with a metro station and multiple tram links. A location with full amenities in the area, convenient to the French School.

The interior features a large central entrance hall, an air-conditioned living room offering beautiful views, a fully fitted eat-in kitchen with a pantry, two bedrooms, a bathroom including a bathtub and bidet, a separate toilet, and a walk-in closet.

Hardwood parquet floors, tiles, original wooden doors, crystal chandeliers, decorative Dutch stove, gas boiler, washing machine, dishwasher, microwave oven, iron and ironing board, satellite connection. Parking is available at CZK 3,300/month in underground garages located 15 minutes away from the building.



* Area of the unit according to the Civil Code. The area consists of the sum total area of the entire unit bounded by perimeter walls.

Apartment Two-bedroom (3+1)

€ 1240 | CZK 31 000

104 m², Prague 2, Nové Město, Rašínovo nábřeží

