

## House Four-bedroom (5+kk)

Rented

219 m<sup>2</sup>, Praha-východ, Senohraby, Nad Stráněmi



# House Four-bedroom (5+kk)

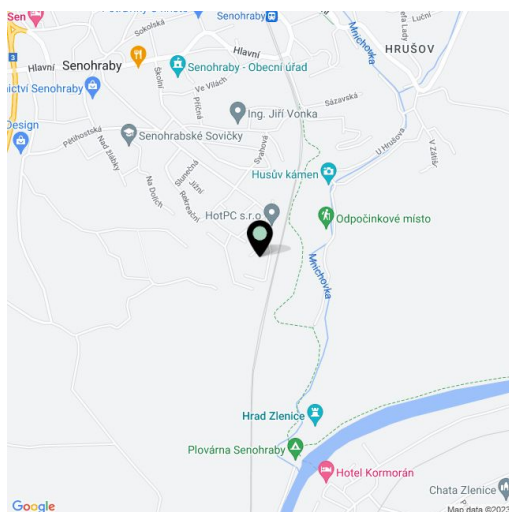
**Rented**219 m<sup>2</sup>, Praha-východ, Senohraby, Nad Stráněmi

Total area	219 m <sup>2</sup>
Plot	1211 m <sup>2</sup>
Foot print	207 m <sup>2</sup>
Garden	904 m <sup>2</sup>
Floor area	200 m <sup>2</sup>
Terrace	19 m <sup>2</sup>
Parking	Carport parking.
Garage	Yes
Cellar	Yes
PENB	G
Reference number	40236
Available from	Immediately

This completely renovated 1930s house with a new modern extension stands on a sunny corner plot located at the end of a cul-de-sac under Hlásek Hill with famous romantic castle ruins, on the outskirts of Senohraby, where a residential neighborhood smoothly turns into an area with cottages, beyond which is a forest. The village by the Sázava River is located on the railway corridor near the town of Říčany, within comfortable driving distance to Prague along the D1 highway.

The ground floor consists of a glazed living room with an open plan kitchen and dining room, a master bedroom with a **winter garden**, a dressing room/study, and a bathroom, a foyer, and a staircase hall. Upstairs, there are 2 bedrooms, a bathroom, and a separate toilet. Both rooms have access to the **terrace**.

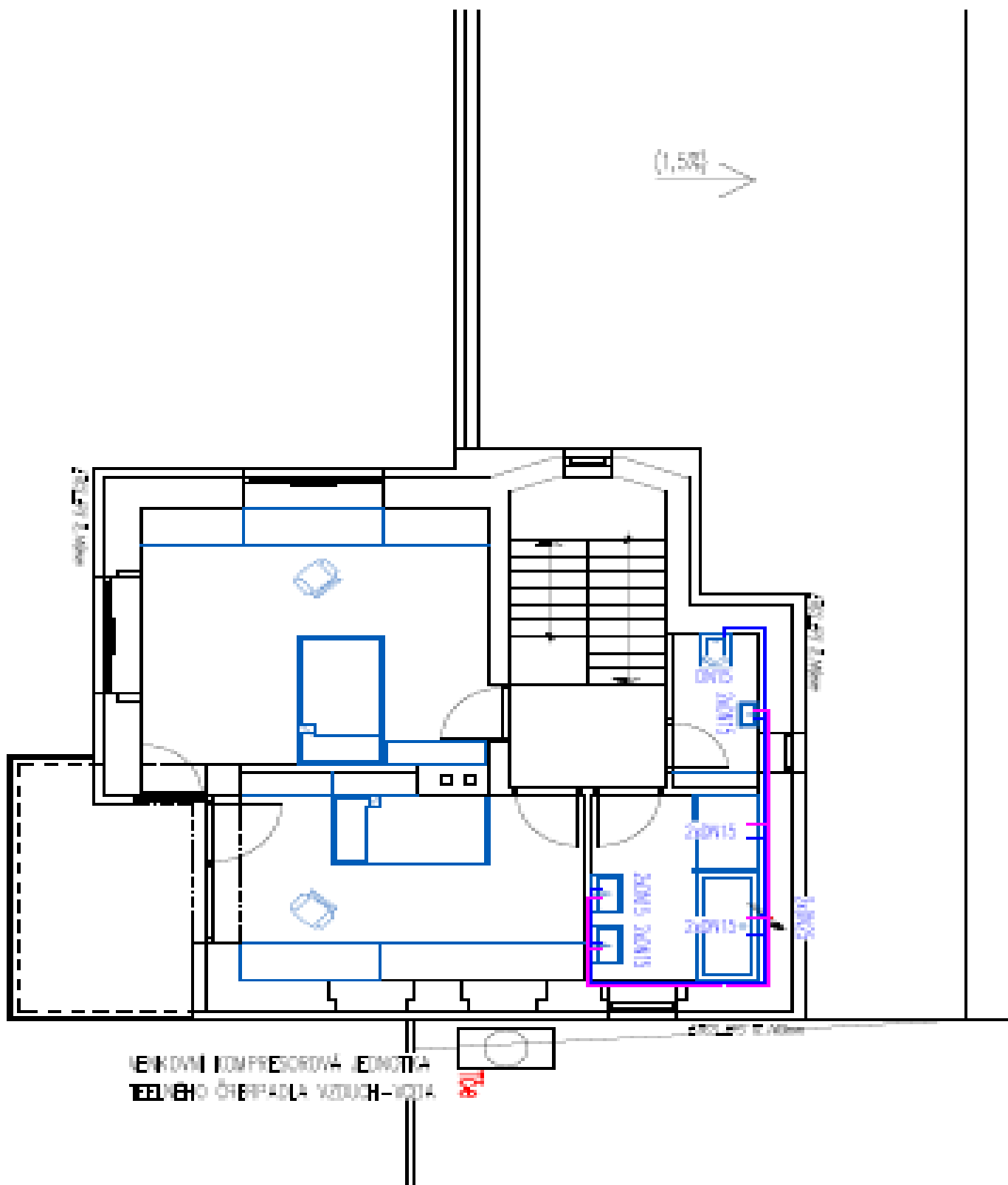
Wooden floors, tiles, dishwasher, induction hob, built-in wardrobes, heat pump, floor heating. Carport parking, extra parking available on the plot. Deposit for energies CZK 5,000/month.



## House Four-bedroom (5+kk)

Rented

219 m<sup>2</sup>, Praha-východ, Senohraby, Nad Stráněmi



# House Four-bedroom (5+kk)

Rented

219 m<sup>2</sup>, Praha-východ, Senohraby, Nad Stráněmi

