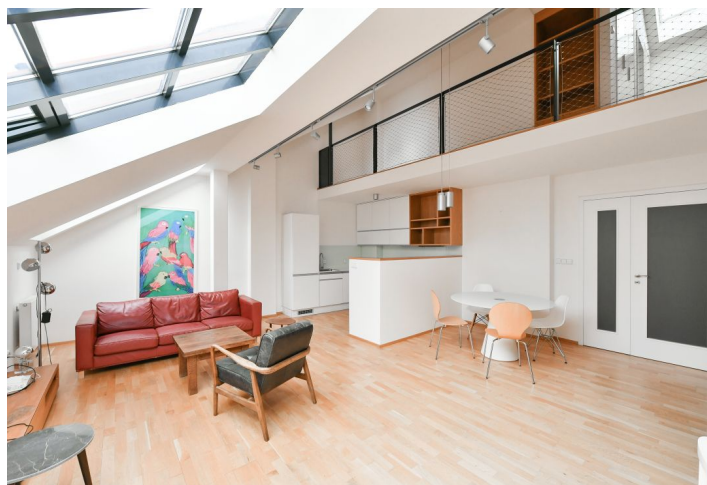
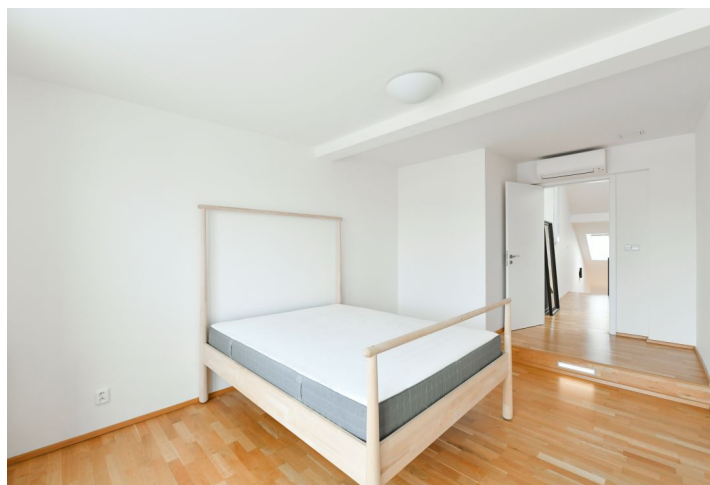
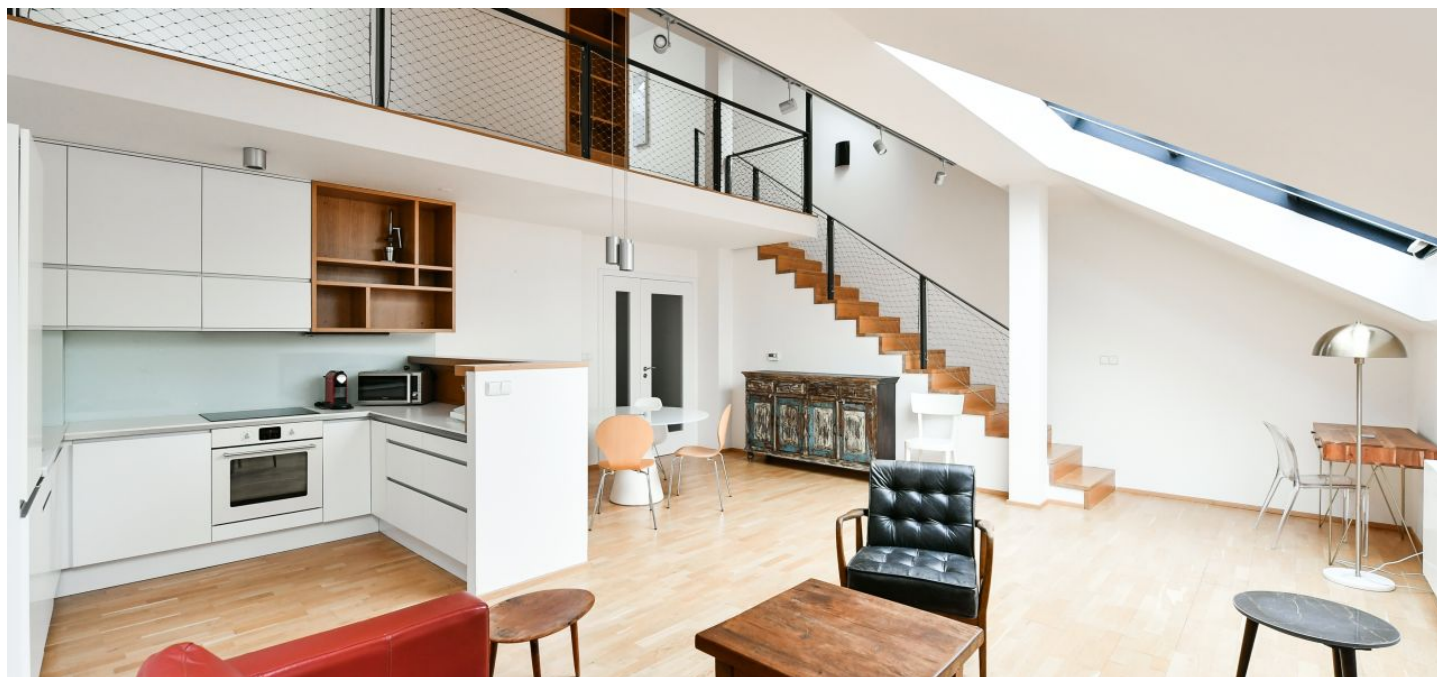


Apartment One-bedroom (2+kk)

Rented

109 m², Prague 1, Nové Město, Jungmannova



Apartment One-bedroom (2+kk)

Rented

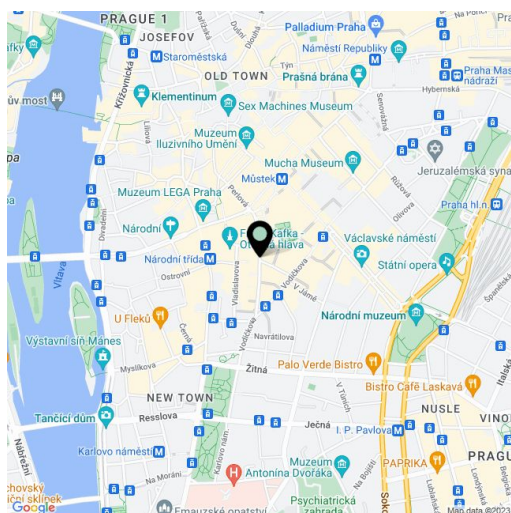
109 m², Prague 1, Nové Město, Jungmannova

Total area	114 m ²
Floor area*	109 m ²
Terrace	5 m ²
Parking	-
Cellar	Yes
Service price	Deposit for common building charges and water CZK 2,500/month. Electricity and gas - transferred to the tenant.
PENB	G
Reference number	40197
Available from	Immediately

This refurbished and fully furnished split-level apartment with a terrace is situated on the fifth floor of a reconstructed traditional building with an elevator and preserved original features. Located just a few steps from Wenceslas Square with the Muzeum and Můstek metro stations, the Franciscan Garden, the popular Myšák Confectionery and Gallery, and the Quadrio shopping mall. A prestigious address close to the Lucerna cinema and concert club, several theaters and numerous shops, boutiques, bistros, restaurants, and more.

The lower level includes a living room with a fully fitted open plan kitchen and atelier windows, a guest toilet, a storage room, and a spacious entry hall. The upper floor offers a gallery with built-in storage, one bedroom with access to the terrace providing views of Petřín Hill and Prague Castle, and an abathroom with a bathtub and toilet.

Air-conditioning in the bedroom, parquet floors, tiles, security entry door, remote controlled **exterior blinds**, gas boiler, dishwasher, induction hob, **cellar**.



* Size of the unit according to the Housing Act.

The area consists of the sum total of the internal area of every room.