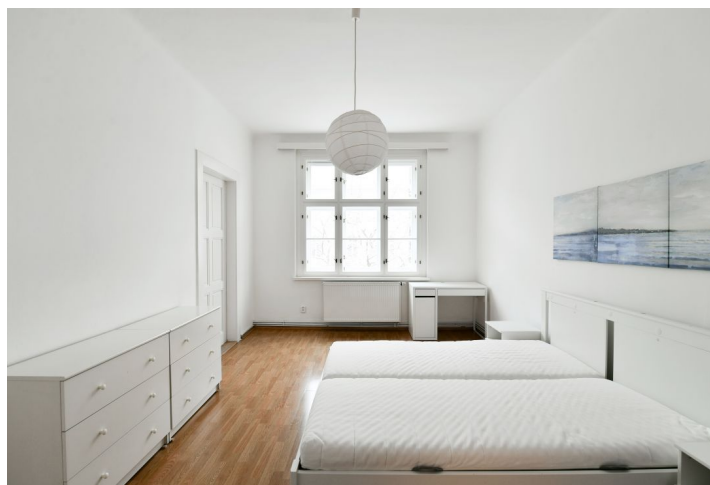
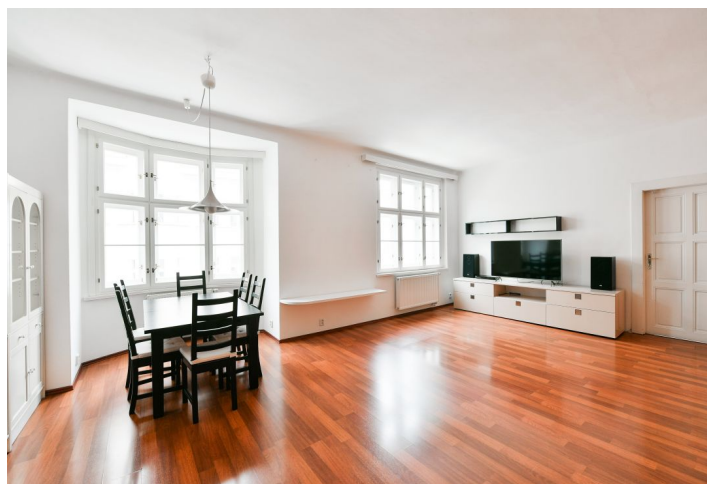


## Apartment Two-bedroom (3+kk)

Rented

96 m<sup>2</sup>, Prague 6, Bubeneč, Národní obrany



# Apartment Two-bedroom (3+kk)

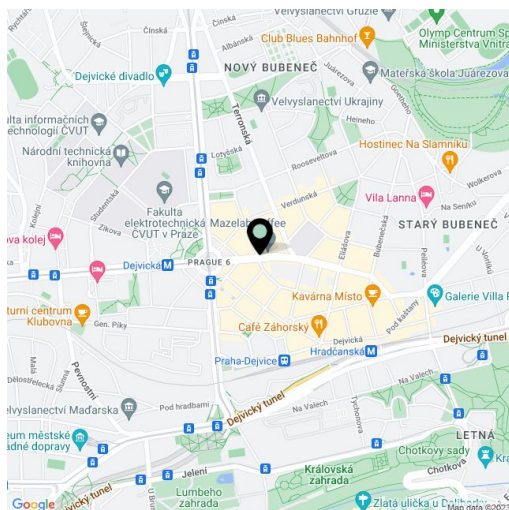
**Rented**96 m<sup>2</sup>, Prague 6, Bubeneč, Národní obrany

<b>Total area</b>	96 m <sup>2</sup>
<b>Parking</b>	-
<b>Cellar</b>	Yes
<b>Service price</b>	Deposit for common building charges CZK 800/person/month. Gas and electricity will be paid separately.
<b>PENB</b>	G
<b>Reference number</b>	40111
<b>Available from</b>	Immediately

This partly furnished apartment is situated on the 3rd floor of a well-maintained renovated historic residential building with an elevator. Located in the popular neighborhood of Bubeneč with a wide range of amenities and services, minutes from the Dejvická and Hradčanská metro stations, bus, and tram links. Within easy reach of Stromovka and Letenské Sady parks as well as Prague Castle, conveniently located for the airport and Prague 6 international schools.

The interior features a living room with a fully equipped kitchen, two bedrooms, a bathroom with a bathtub, a separate toilet, a storage room, and an entry hall with built-in wardrobes.

Laminate floors, tiles, dishwasher, microwave oven, gas boiler, washing machine, cellar.



\* Area of the unit according to the Civil Code. The area consists of the sum total area of the entire unit bounded by perimeter walls.