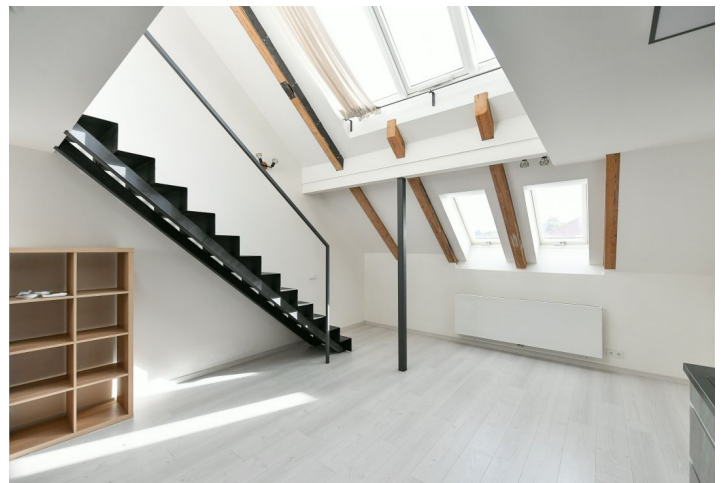
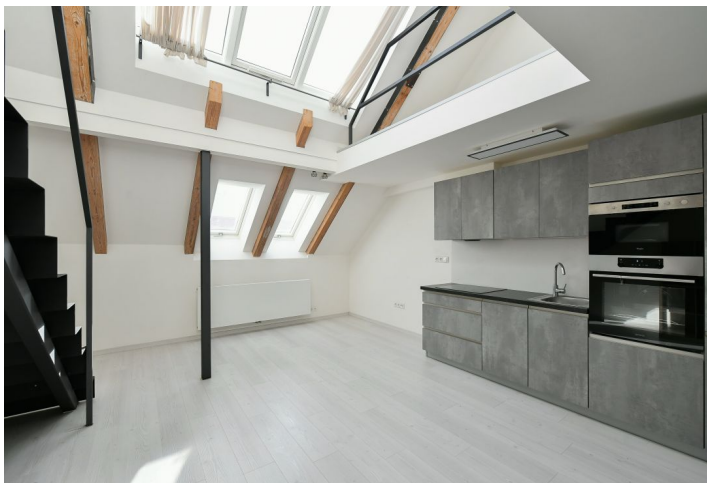


## Apartment One-bedroom (2+kk)

Rented

61 m<sup>2</sup>, Prague 6, Dejvice, Buzulucká



## Apartment One-bedroom (2+kk)

Rented

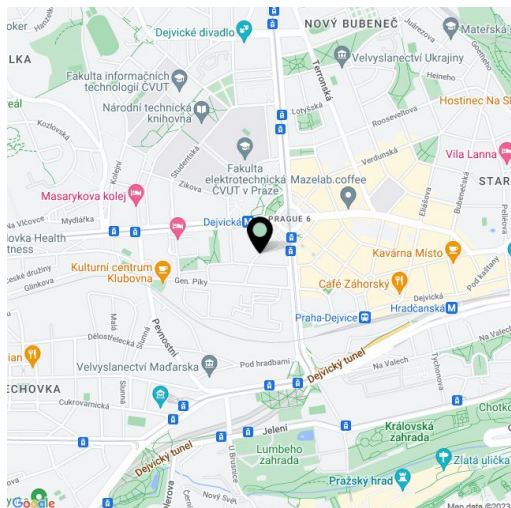
61 m<sup>2</sup>, Prague 6, Dejvice, Buzulucká

Total area	61 m <sup>2</sup>
Parking	-
Cellar	-
Service price	Monthly deposit for common building charges and water: CZK 1,000 for one person, CZK1,500 for two persons. Electricity is billed separately - transferred to the tenant.
PENB	G
Reference number	40025
Available from	Immediately

This air-conditioned, bright duplex apartment is situated on the 4th floor of a building without an elevator in a popular residential area of Prague 6 – Dejvice with full amenities and services within easy reach. Located a few min. from the Dejvická metro station on Vítězné Náměstí Square with multiple tram and bus stops, and within walking distance of Prague Castle and Stromovka Park.

The interior includes a living room with fully fitted open plan kitchen, a guest toilet, and an entrance hall on the lower level. The upper floor offers a gallery with an open bedroom and an en-suite shower bathroom.

Laminate floating floors, tiles, **air-conditioning**, dishwasher, microwave oven, washing machine, **electric roof window**, **storage space** in the entrance hall, electric boiler.



\* Size of the unit according to the Housing Act.  
The area consists of the sum total of the internal area of every room.