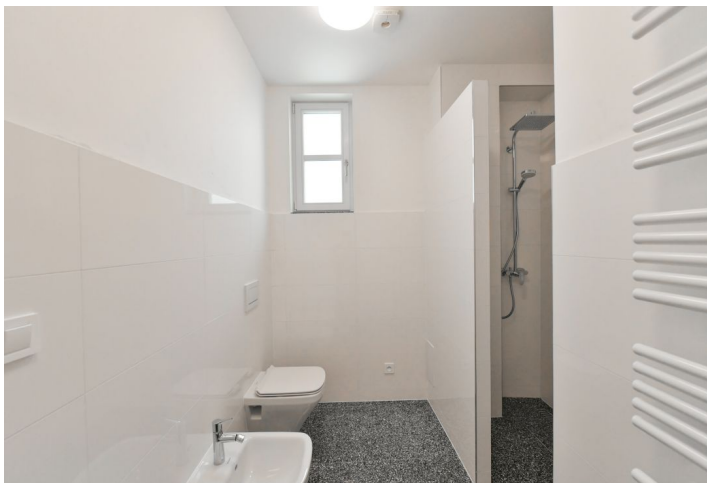




Apartment Two-bedroom (3+kk)

Rented

73 m², Prague 1, Nové Město, Palackého





Apartment Two-bedroom (3+kk)

Rented

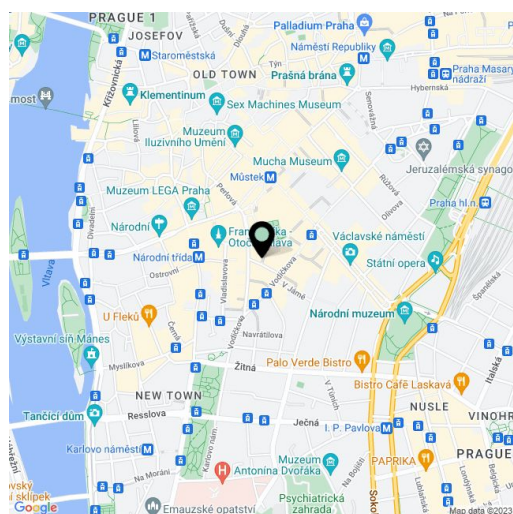
73 m², Prague 1, Nové Město, Palackého

Total area	73 m ²
Parking	-
Cellar	Yes
PENB	G
Reference number	39991
Available from	Immediately

This air-conditioned, fully newly refurbished 2-bedroom 2-bathroom apartment is situated on the 5th floor of a Functionalist residential building with a lift right in the heart of Prague. Located just a few steps from Wenceslas Square with the Muzeum and Můstek metro stations, the Franciscan Garden, the popular Myšák Confectionery and Gallery, and the Quadrio shopping mall. A prestigious address close to the Lucerna cinema and concert club, several theaters and numerous shops, boutiques, bistros, restaurants and more.

The interior features a living room with fully-equipped kitchen corner, **2 bedrooms** (one with en-suite shower bathroom, and one with a **walk-in closet** and a shower bathroom with toilet and bidet), a guest toilet and the entrance hall.

Oak **parquet** floors, **terrazzo tiles**, inductional hob, dishwasher, **washing machine with dryer**, **alarm**, safety entrance door, **roman blinds**. Monthly deposit for service charges and heating: CZK 3,000. Electricity is paid separately.



* Area of the unit according to the Civil Code. The area consists of the sum total area of the entire unit bounded by perimeter walls.



Apartment Two-bedroom (3+kk)

73 m², Prague 1, Nové Město, Palackého

Rented

