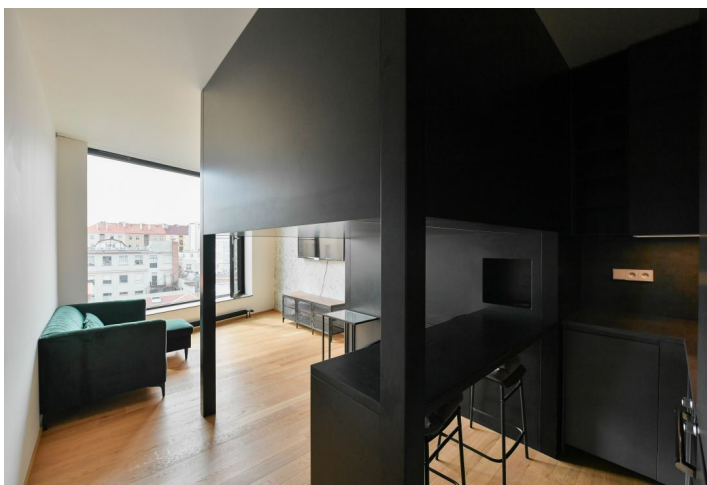
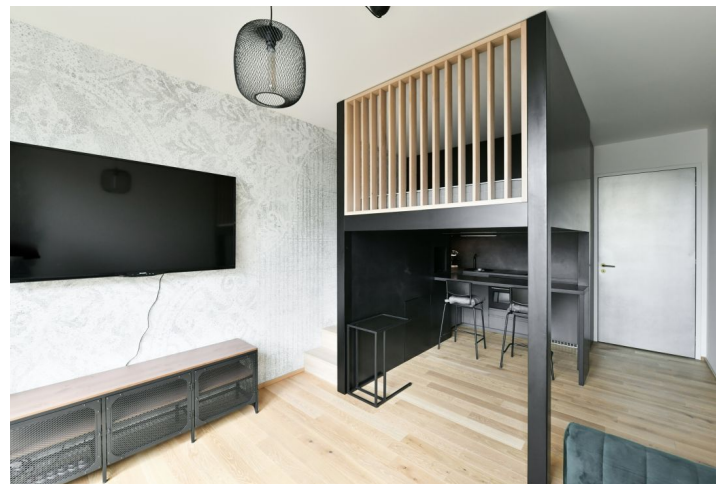


Apartment Studio (1+kk)

Rented

31.3 m², Prague 7, Holešovice, Komunardů



Apartment Studio (1+kk)

Rented

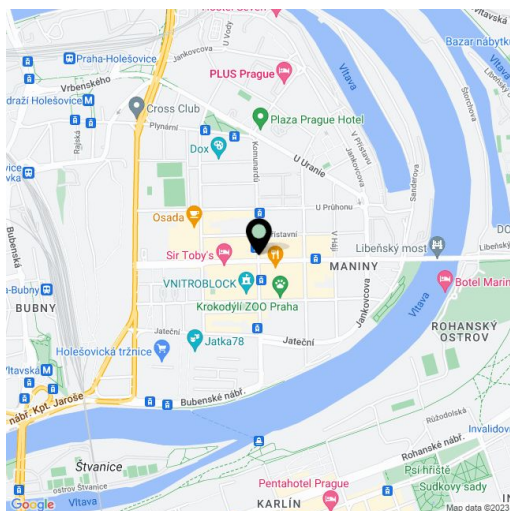
31.3 m², Prague 7, Holešovice, Komunardů

Total area	31 m ²
Parking	-
Cellar	Yes
PENB	C
Reference number	39961
Available from	Immediately

Furnished studio apartment with great design in a brand new iconic building by the renown architect Stanislav Fiala, author of the famous DRN building. Situated on the 3rd floor of this top-of-the-line apartment building in a dynamic district with trendy cafes, restaurants, bistros and excellent transport accessibility. The previously industrial area of Holešovice has now grown into a modern district with a slightly bohemian atmosphere. The advantages of living here include convenient access to the city center by tram and metro (Vltavská and Nádraží Holešovice stations), all civic amenities, music clubs, DOX art gallery, La Fabrika and Játka 78 theaters, a multicultural center, and more. A golf driving range is nearby, as well as the popular bike path along the Vltava river.

The interior features a living room with a fully fitted open plan kitchen, a **sleeping deck**, a bathroom with shower, toilet and **bidet shower**, entrance hall with **built-in wardrobes**.

High standard materials, wooden floors, stone tiles in the bathroom with underfloor heating, aluminum double-glazed large-format window, security entry door, central heating, dishwasher, oven combined with microwave, **coffee machine**, bike / pram storage, lift, **cellar**. Monthly deposit for service charges, heating and water: CZK 1800. Electricity is billed separately.



* Area of the unit according to the Civil Code. The area consists of the sum total area of the entire unit bounded by perimeter walls.

Apartment Studio (1+kk)

31.3 m², Prague 7, Holešovice, Komunardů

Rented

