

House Ten-bedroom (11+1)

Sold

335 m², Ústí nad Labem, Máchova



House Ten-bedroom (11+1)

Sold

335 m², Ústí nad Labem, Máchova

Plot	1 180 m ²
Foot print	164 m ²
Garden	1 016 m ²
Parking	Parking on the plot
Garage	Yes
Cellar	Yes
PENB	G
Reference number	39864

This Art Nouveau villa from 1925 with a large garden guaranteeing privacy is located in a beautiful place on a hill overlooking the chateau Větruše and the Krušné Mountains. The villa can be used as a whole as a family or corporate residence, or divided into 3 separate housing units.

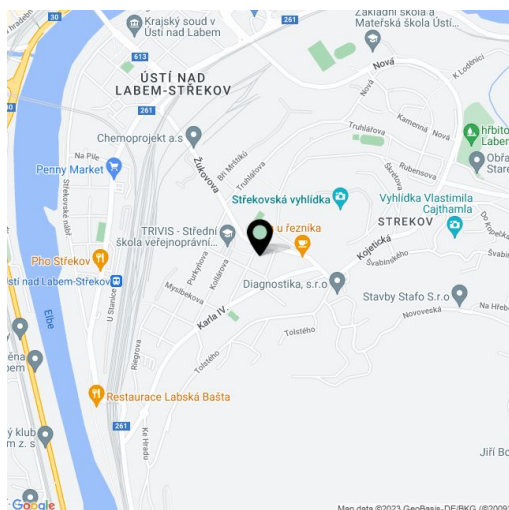
In the semi-basement, there is currently a 1-bedroom unit, on the ground floor 2-bedroom apartment, and on the 1st floor 3-bedroom apartment with a balcony.

The ground floor retains the original craftsmanship - parquet floors, stucco ceilings, wooden stairs and doors. The windows have blinds, some insect screens. The equipment includes LED lights. The house was renovated in 2001–2002 (Bramac roof, plastic windows, electricity, water, waste and heating). Central heating with 2 gas boilers (Baxi and Junkers). The house is guarded by a security system. Parking on the outdoor area on the plot, the original garage is used as a warehouse.

The villa is part of a traditional residential area under the **Střekovská Malé Sedlo viewpoint**. Within reach is a grocery store, kindergarten and elementary school, clinic or post office. Not far from the house, there are trolleybuses; the train station is about 1.5 km away. There is a nature and hiking trail nearby, which leads to the majestic **Střekov Castle** and the **Sluneční stráň** nature reserve.

Floor area 335 m², built-up area 164 m², garden 1,016 m², land 1,180 m².

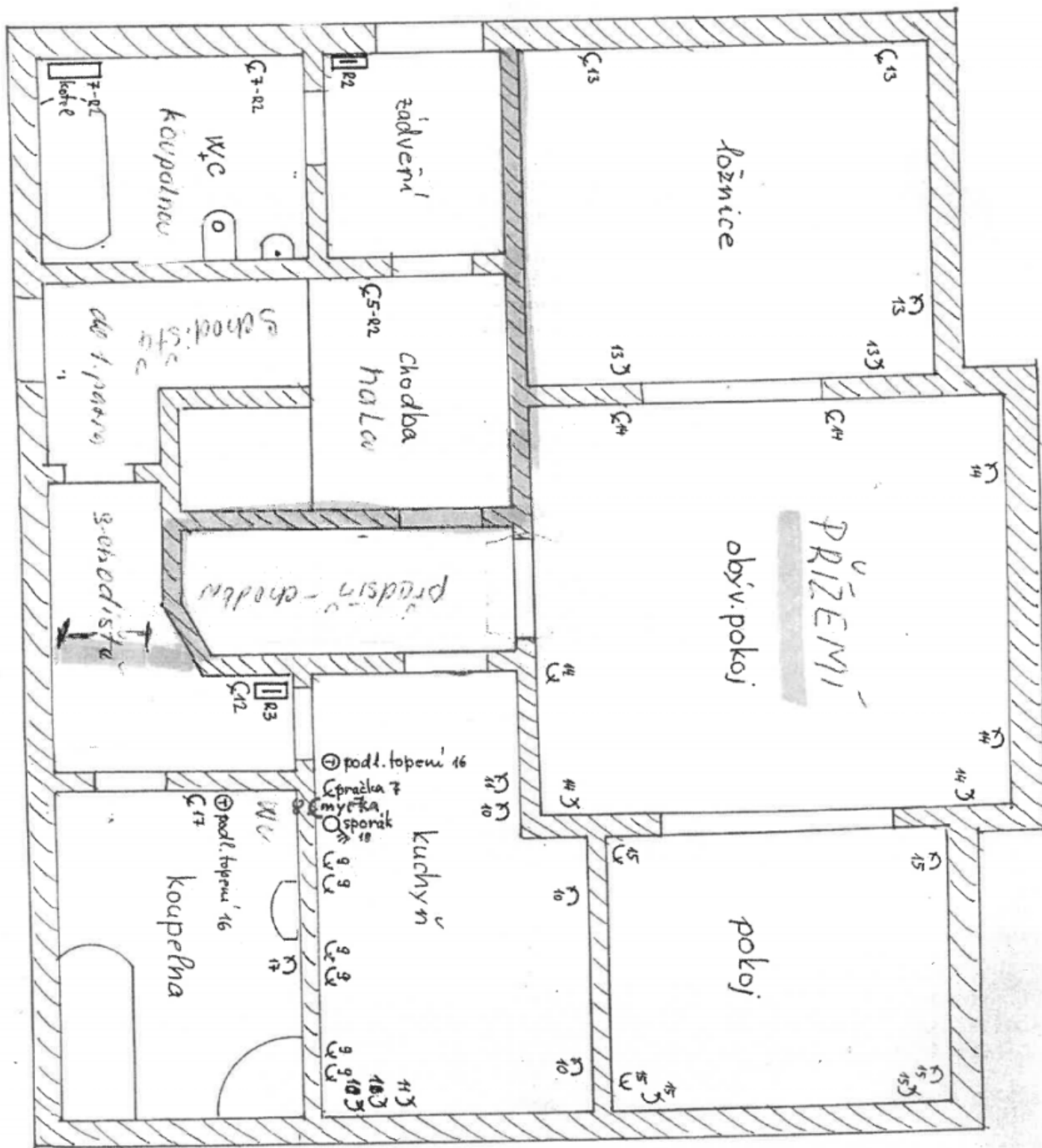
In addition to regular property viewings, we also offer real time video viewings via WhatsApp, FaceTime, Messenger, Skype, and other apps.



House Ten-bedroom (11+1)

Sold

335 m², Ústí nad Labem, Máchova



House Ten-bedroom (11+1)

Sold

335 m², Ústí nad Labem, Máchova

