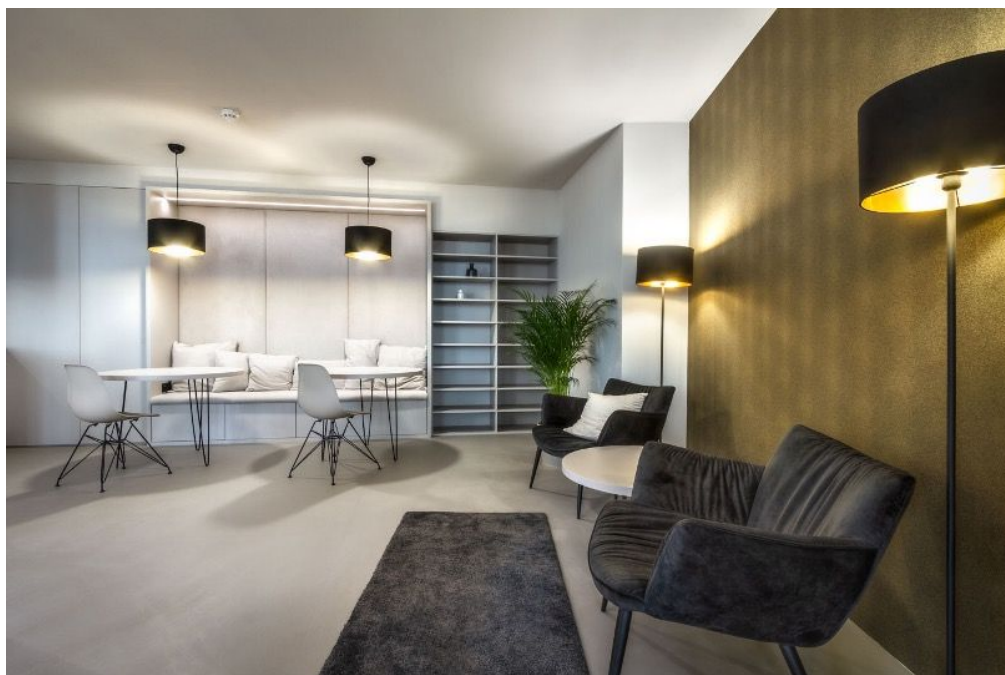


Office space

Rented

Prague 1, Staré Město, Na Příkopě

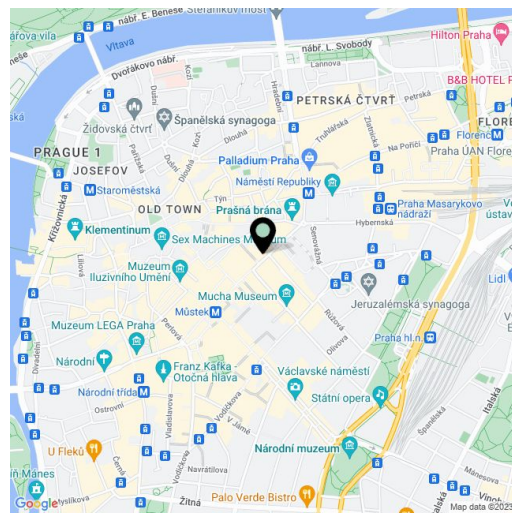


Office space

Rented

Prague 1, Staré Město, Na Příkopě

Service price	150 CZK monthly per m ²
Available area	845 m ²
Cellar	-
Terrace	7 m ²
Parking	-
PENB	G
Reference number	39835



Office space for lease on the mezzanine in a majestic building located in the historic city center near Old Town and Wenceslas squares. The building combines historically protected interiors with the latest design trends. In the vicinity of the building is also the late Gothic Powder Tower, which is considered one of the main symbols of Prague. The size of a typical floor is 1,600 sq. m. Parking spaces are available in facilities within walking distance.

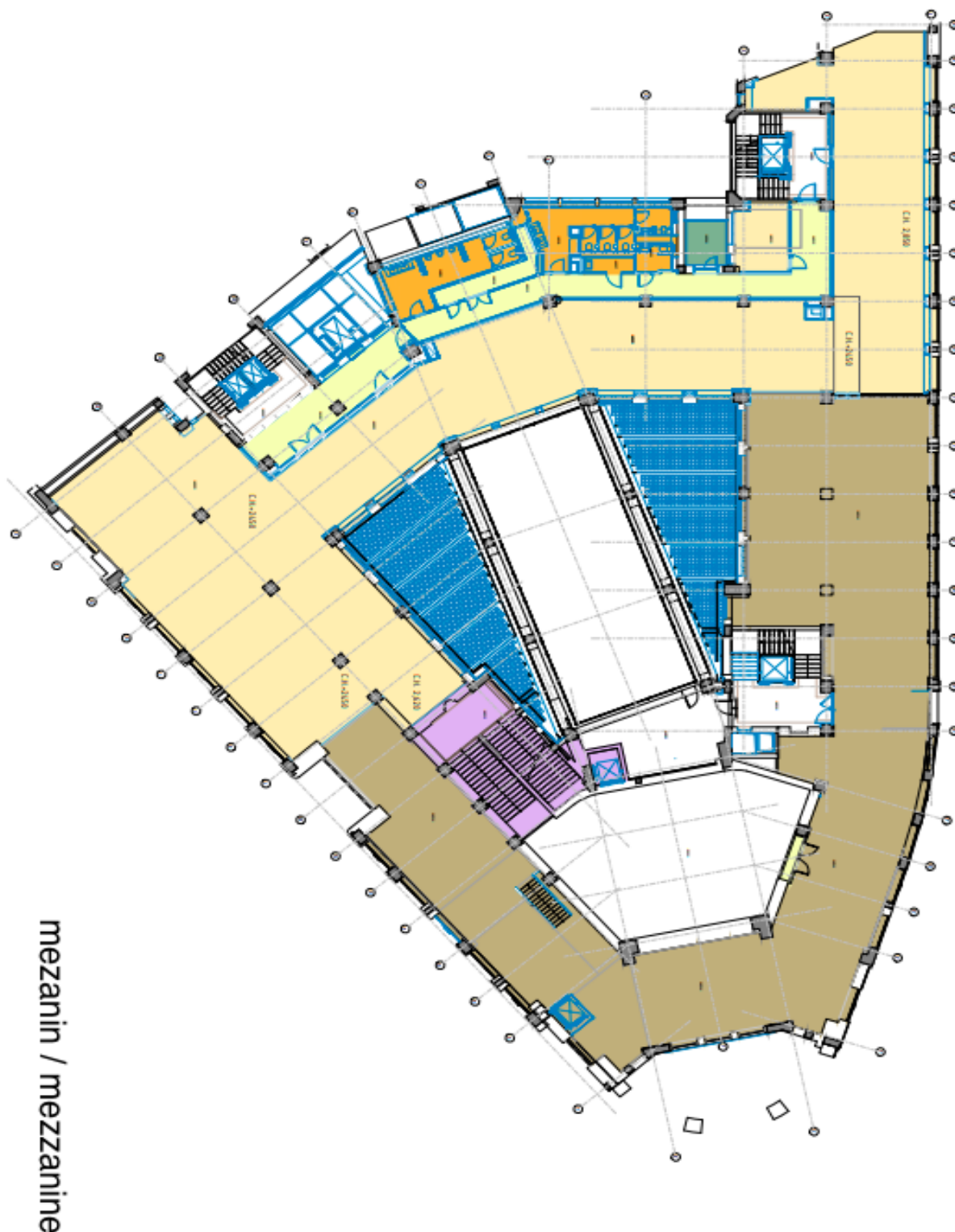
Location:

Excellent accessibility by public transport. The Náměstí Republiky metro station (line B) can be reached in 2 minutes, the Hlavní nádraží metro station in 8 minutes, the Náměstí Republiky tram stop in 2 minutes, and The Václav Havel Airport is a 35-minute drive away. In the vicinity of the building are also all civic amenities, boutiques, cafes, restaurants, banks, and a shopping center.

Features and services:

- Openable windows
- 24/7 access
- CCTV
- Building management system and power backup generator
- Toilets
- HVAC
- Elevators
- Lighting
- Sprinklers
- EPS smoke detectors
- Ceiling height - up to 3.8 m

Lease and service charges listed without VAT. Lessee pays no commission.



mezanin / mezzanine