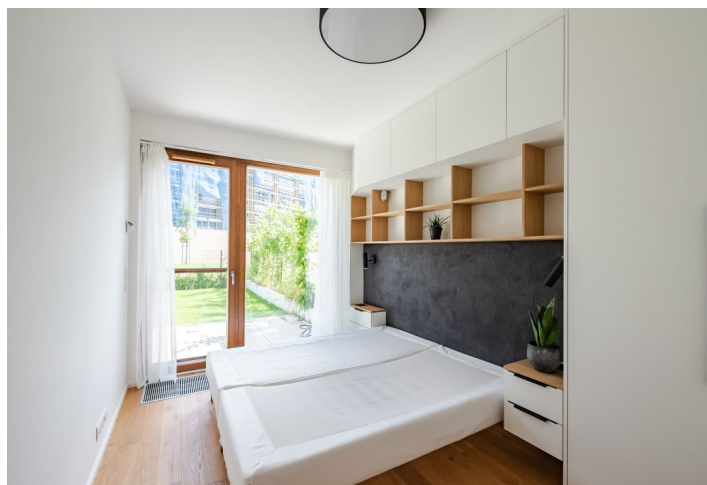


Apartment Two-bedroom (3+kk)

Sold

78 m², Prague 5, Košíře, Naskové

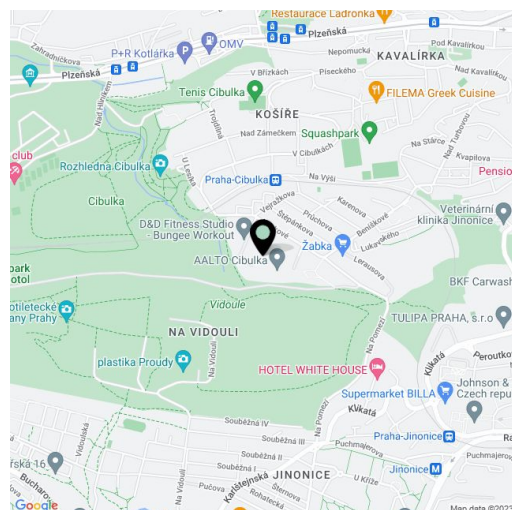


Apartment Two-bedroom (3+kk)

Sold

78 m², Prague 5, Košíře, Naskové

Total area	78 m ²
Garden	88 m ²
Parking	500 000
Garage	Yes
Cellar	Yes
Service price	5 300 CZK monthly
PENB	B
Reference number	39821



* Area of the unit according to the Civil Code. The area consists of the sum total area of the entire unit bounded by perimeter walls.

Designed by an architect and luxuriously equipped, this family apartment with 2 front gardens and parking is situated on the ground floor of the new Aalto Cibulka residence, in a quiet part of Prague 5 surrounded by greenery.

The main living room with a kitchen is naturally connected to the **covered terrace and front garden**. 2 northeast-facing bedrooms have access to a second **terrace with a front garden**. A bathroom, a toilet, and a storage room are accessible from the hall. In the front garden, there is a **garden house** for storing equipment.

The apartment is still **under warranty** (acquisition of ownership of the new apartment 2/2020), as are appliances and **premium furniture that was custom-made by an architect**. The kitchen has a built-in top-of-the-line range of **Siemens Wi-Fi** appliances (fridge, microwave, steam oven, induction hob, hood, dishwasher), and a wine fridge. The living room has a **large amount of storage space**, as well as a **space for a home office**. Both bedrooms and the hall have built-in wardrobes, including shelves. The bathroom is equipped with moisture-resistant chipboard furniture and an **artificial stone counter**. The windows are equipped with remote-controlled (via Wi-Fi) motorized **Somfy outdoor blinds** with an automatically programmable light sensor and insect screens. The rooms are lit by LED lights and **Nordlux lamps**. There is a connection for a washing machine in the closet. **All equipment, including custom-made furniture, in the apartment is included in the price**. It is protected by an alarm and comes with a **parking space** in the underground garages and a **cellar storage unit**.

The Aalto Cibulka project stands **on the edge** of a natural **forest park** and is exceptional for its undulating profile. The location offers many **opportunities for sports and relaxation**, nearby is a sports center, tennis courts, and a golf course. The adjacent building is a former factory that currently being renovated, and in the autumn, the Parvi project will be completed, which will be connected with Aalto Cibulka to create a **private courtyard** full of greenery, with a **children's playground** and a water feature. The complex has its **own entrance to a forest**. The busy **Anděl** intersection with many shops and restaurants is **10 minutes** away by car and 15 minutes by public transport. There is a bus stop on Nasková Street.

Floor area 78.4 m², front gardens 47.1 + 41.1 m², cellar.

In addition to regular property viewings, we also offer real-time video viewings via WhatsApp, FaceTime, Messenger, Skype, and other apps.

Apartment Two-bedroom (3+kk)

Sold

78 m², Prague 5, Košíře, Naskové

