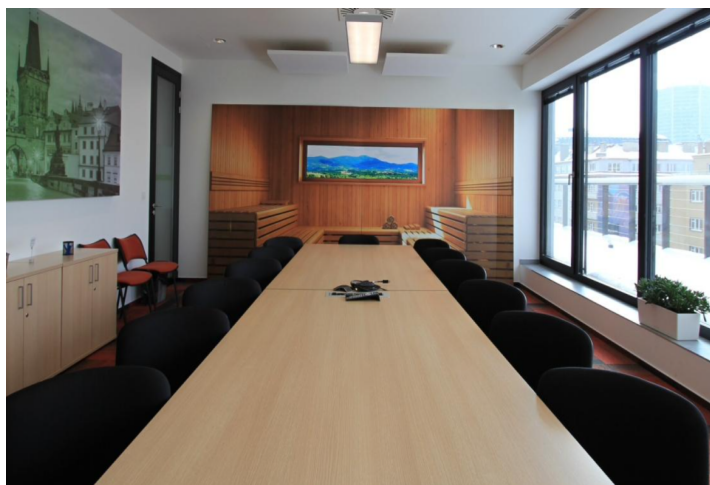
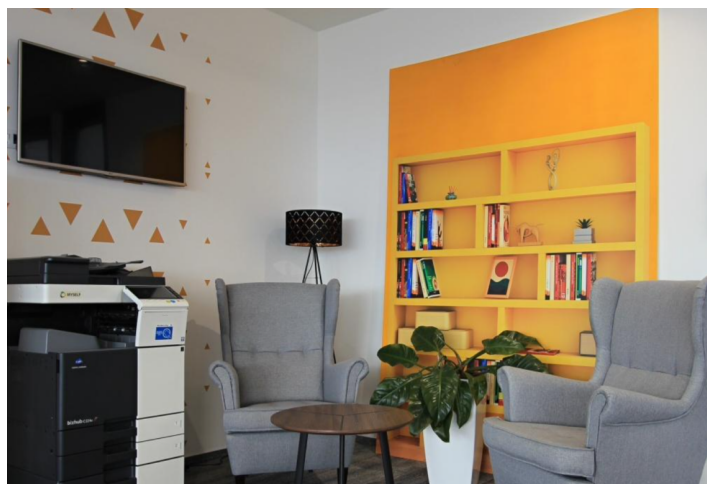
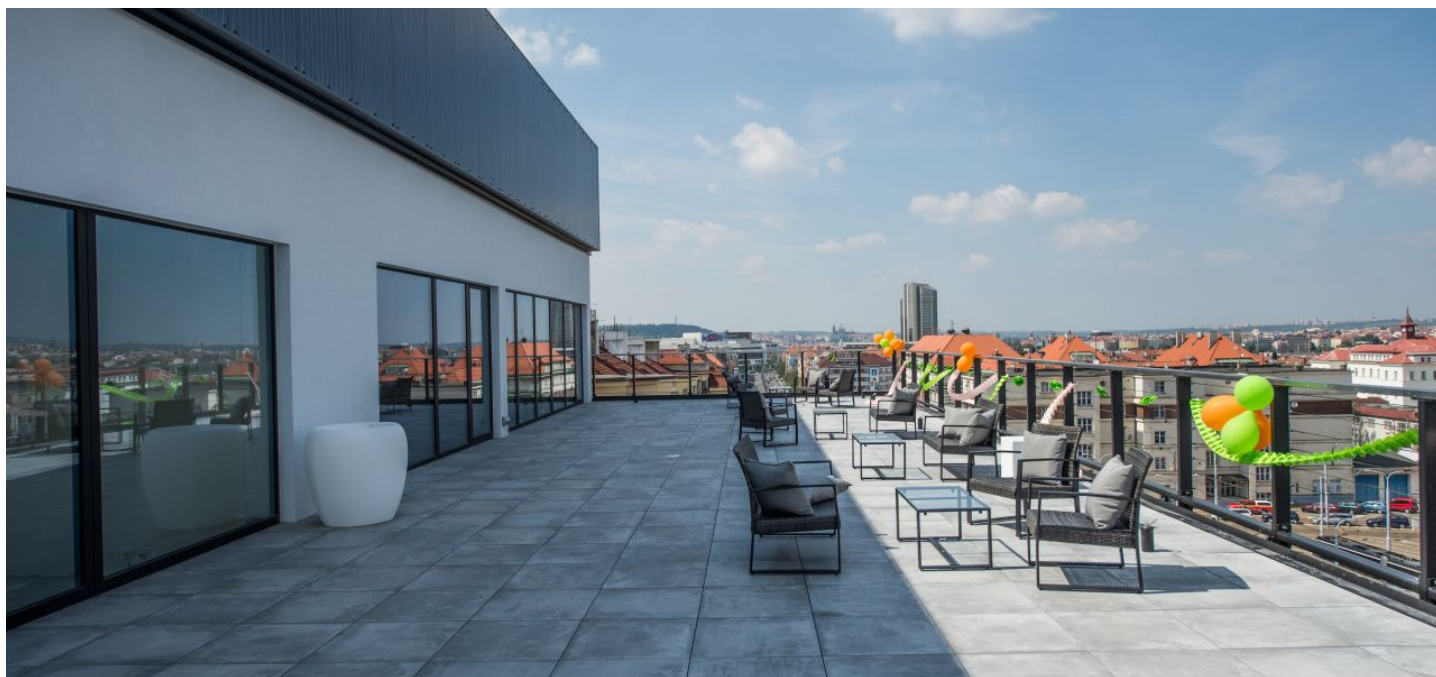


Office space

Rented

Prague 4, Nusle, 5. Května



Office space

Rented

Prague 4, Nusle, 5. Května

Service price	80 CZK monthly per m ²
Available area	550 m ²
Cellar	-
Terrace	222 m ²
Parking	EUR 165 / ps / month
PENB	B
Reference number	39755

Office space for sublease till 31st May 2025 on the 5th floor in ambitious five-story modern office building. Tenants have the option of flexible division of offices, in addition, they can use a common terrace. The offices offer an above-standard clear height (3 m), non-stop access or outdoor blinds, the building includes underground garages with a charging station for electric cars, a bicycle shed with showers and retail space on the ground floor.

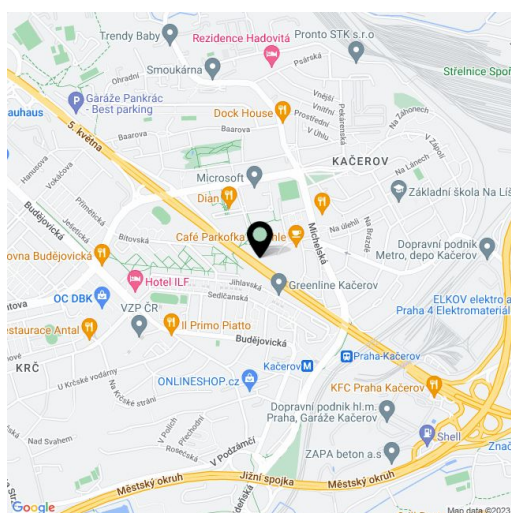
Location:

The building will be located in a prime location in Prague 4 that is the fastest growing commercial area in the Czech capital with great potential for development. The building will be located between the Pankrác and Pražského povstání metro stations on line C, near several tram stations and close to the Highway D1 exit, which connects Prague to Brno and Vienna.

Features and Services:

- Openable windows
- Ventilation and air conditioning
- Lowered ceiling with lighting
- Clear height 3 m
- External blinds
- Double floors
- Structured cabling
- Wheelchair access
- Parking

Rental and service charges listed without VAT. Lessee pays no commission.



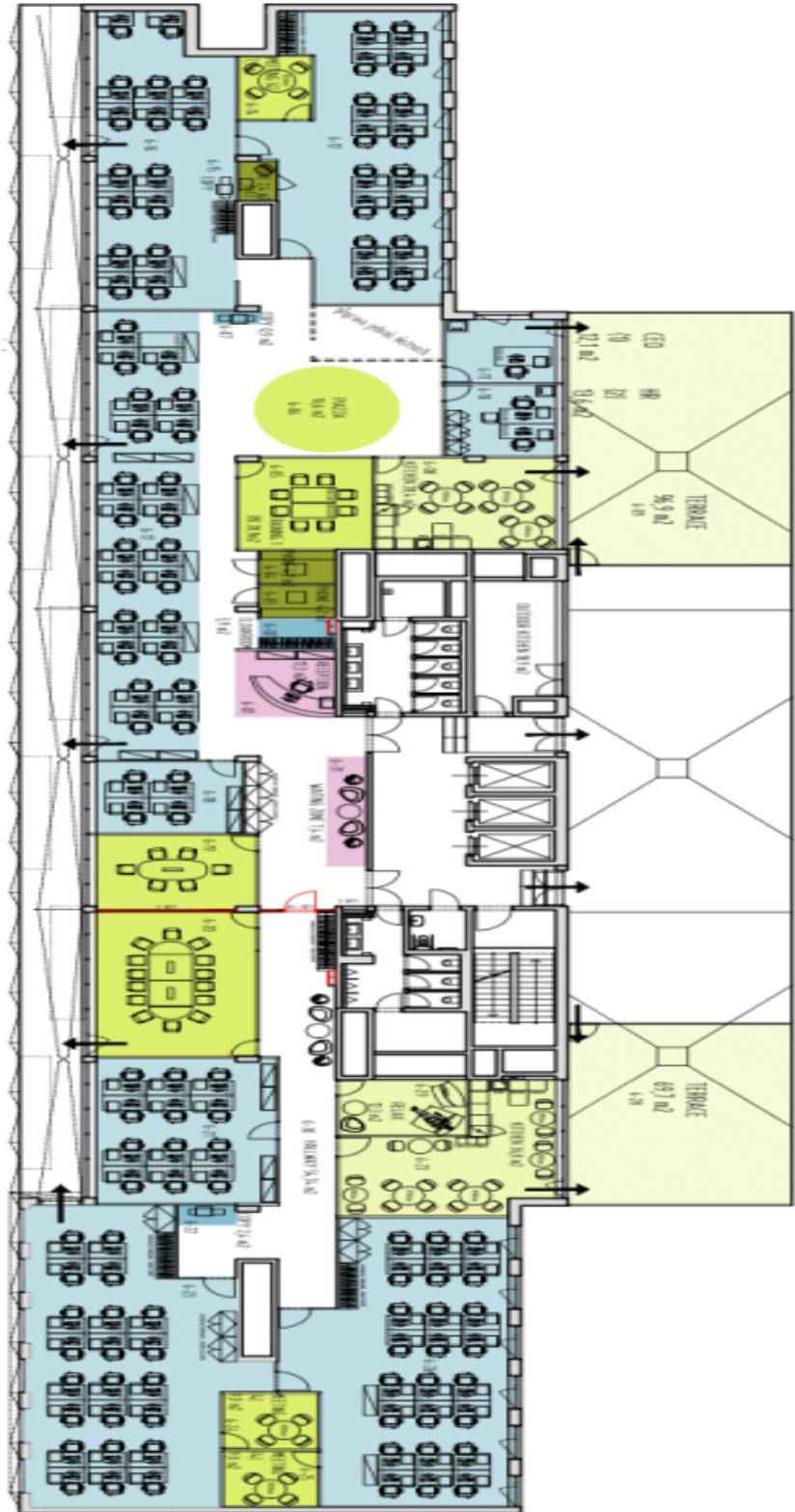
Office space

Rented

Prague 4, Nusle, 5. Května

6 NP

working places: 121
meeting rooms capacity: 44
phone booths: 3



- WORKSTATION
- PHONE BOOTH
- MEETING ROOM
- OPEN PLAN AREA
- STORAGE
- STAIRCASE
- ELEVATOR