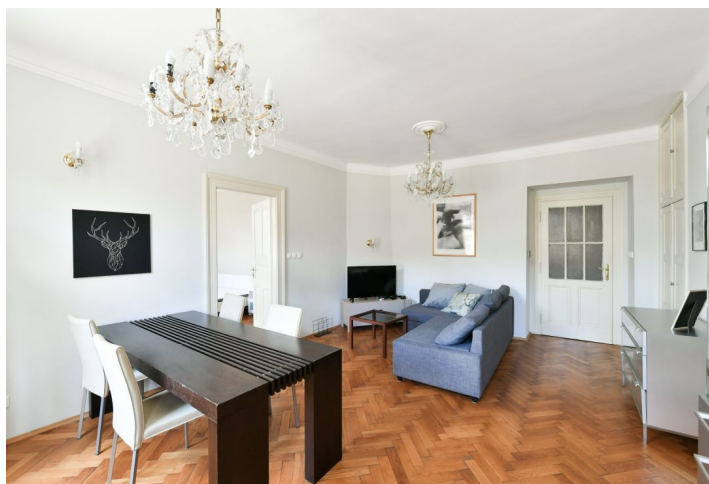


## Apartment Two-bedroom (3+1)

Rented

94.6 m<sup>2</sup>, Prague 1, Nové Město, Školská



## Apartment Two-bedroom (3+1)

Rented

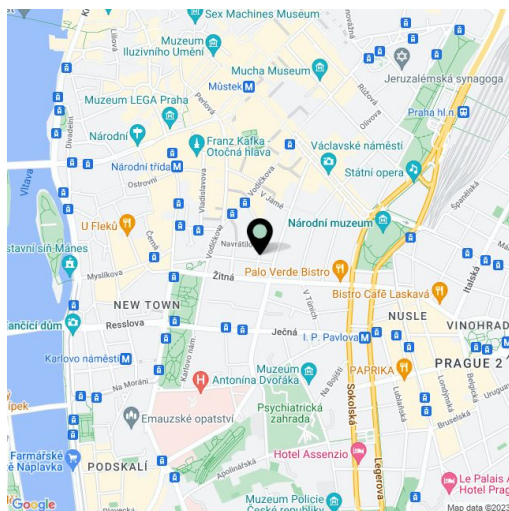
94.6 m<sup>2</sup>, Prague 1, Nové Město, Školská

Total area	102 m <sup>2</sup>
Floor area*	95 m <sup>2</sup>
Balcony	7 m <sup>2</sup>
Parking	-
Cellar	Yes
Service price	Deposit for services and water CZK 1,800/month. Electricity is billed separately.
PENB	G
Reference number	39712
Available from	Immediately

This quiet, fully furnished, renovated apartment with 2 bathrooms and 2 balconies is on the 4th floor of a well-maintained traditional residential building with an elevator. Centrally located in close vicinity of Charles Square, with a metro station and multiple tram connections, within walking distance of Wenceslas Square. Complete amenities and services are available within easy reach.

The bright interior features an entrance hall with a fully fitted kitchen, a living room with a dining area and **balcony** facing the street, two bedrooms, a bathroom (shower, bidet, toilet), with a **balcony** facing the courtyard, a second bathroom (shower and toilet), and a utility room.

Preserved original details, high ceilings, large windows, **hardwood parquet floors**, heated tiles, original built-in wardrobes and storage, electric boiler, washing machine, dishwasher, microwave oven, garden furniture, TV, **cellar**.



\* Area of the unit according to the Civil Code. The area consists of the sum total area of the entire unit bounded by perimeter walls.

