

Office building

Rented

Prague 6, Vokovice, Kladenská



Office building

Rented

Prague 6, Vokovice, Kladenská

| | |
|-------------------------|--------------------|
| Total building area | 556 m ² |
| Tenant consumption | — |
| Parking | 2 200 CZK |
| Parking service charges | — |
| Parking ratio | — |
| Certification | — |
| PENB | G |
| Reference number | 39673 |

Office space for lease in a quiet part of Prague - Vokovice. The building is well-located and therefore offers excellent transport accessibility. The spaces are partially air-conditioned and there is a bathroom and shower on each floor. Two parking spaces in the garage and eight outdoor spaces are available.

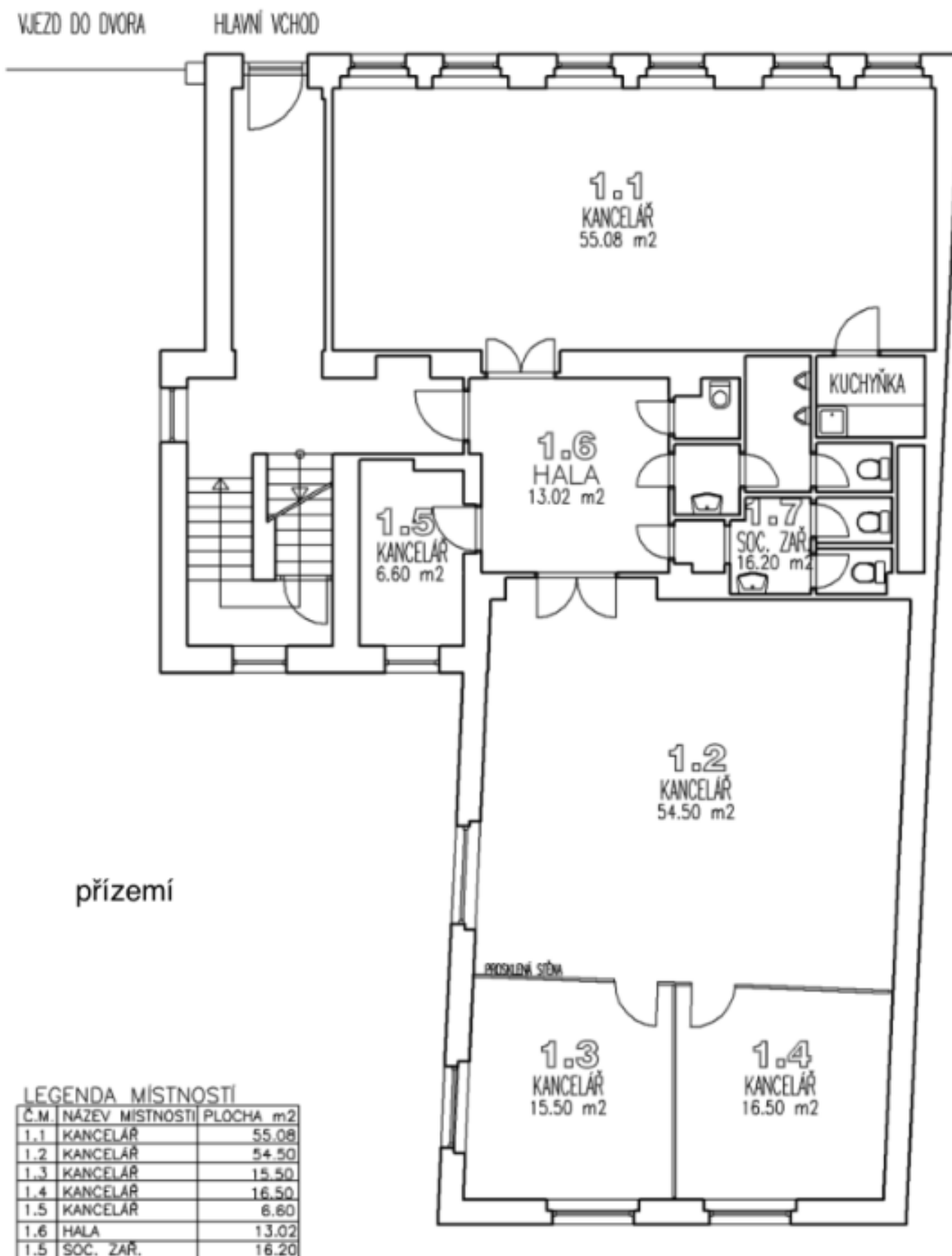
Location:

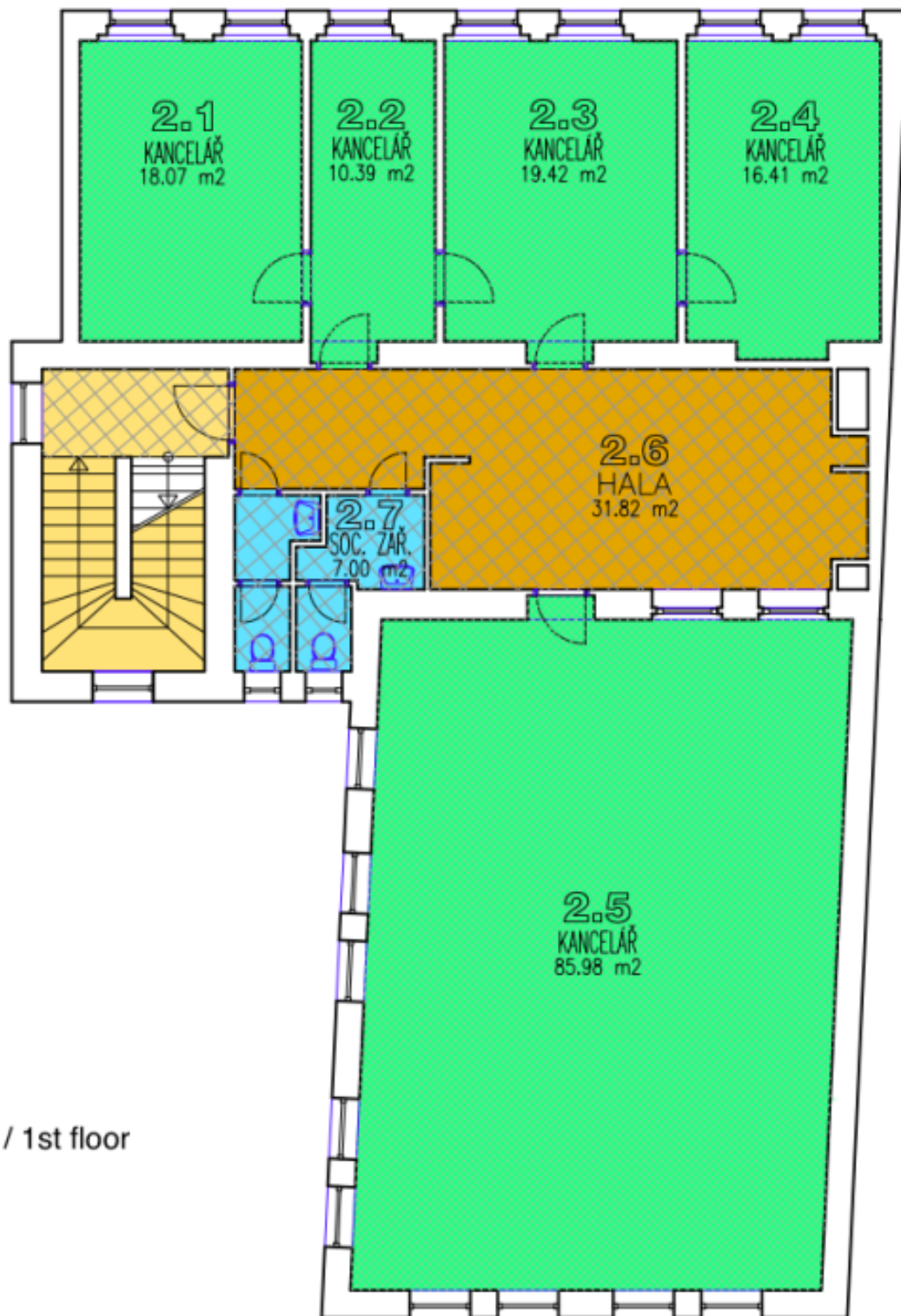
Good accessibility by public transport. The Prague-Veleslavín train station, the Červený Vrch tram stop, and the Nádraží Veleslaví metro station (line A) are all within walking distance. Civic amenities—ATMs, supermarkets, kindergartens, pharmacies, and restaurants—can be found in the immediate vicinity.

Features and services:

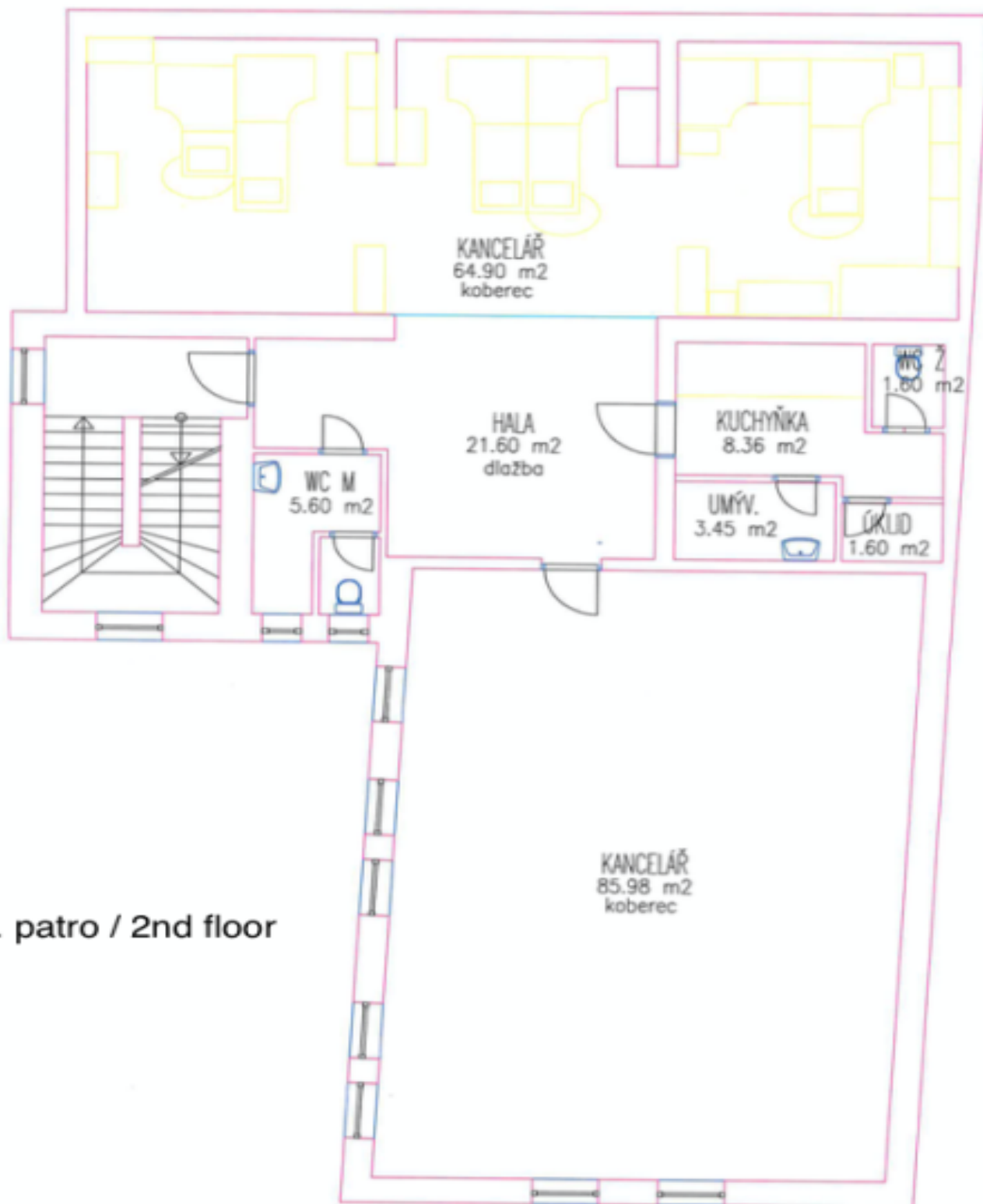
- Air-conditioning
- Toilets
- Showers
- Kitchenette
- Carpets
- Parking

Rental and service charges listed without VAT. Lessee pays no commission.





1. patro / 1st floor



2. patro / 2nd floor