

## Apartment Five-bedroom (6+kk)

Rented

228 m<sup>2</sup>, Prague 6, Břevnov, Šlikova



## Apartment Five-bedroom (6+kk)

Rented

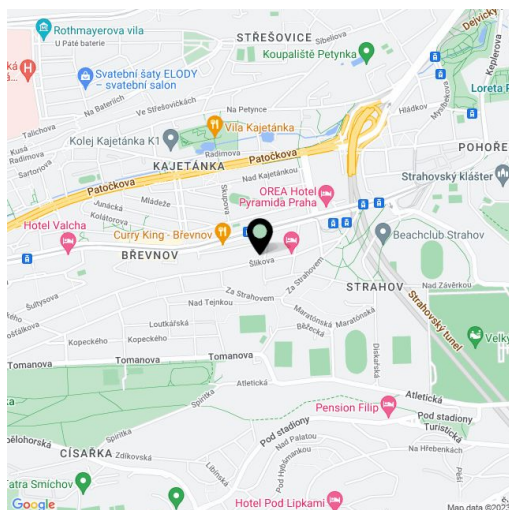
228 m<sup>2</sup>, Prague 6, Břevnov, Šlikova

Total area	252 m <sup>2</sup>
Floor area*	228 m <sup>2</sup>
Balcony	11 m <sup>2</sup>
Terrace	24 m <sup>2</sup>
Parking	Garage parking.
Garage	Yes
Cellar	Yes
PENB	G
Reference number	39615
Available from	Immediately

Duplex 5-bedroom 2-bathroom flat with garage parking, ideal for family living, is located in a historic villa with a large shared garden and wine cellar. Attractive location of Prague 6 - Břevnov within walking distance of Prague Castle, the Velká Strahovská zahrada Garden and Petřínské sady Park, in a place with all services, many schools, including a private elementary school or the prestigious grammar school J. Kepler. Convenient access to the center and the airport.

On the ground floor there is an entrance hall and a staircase, on the 1st floor there is a living room with an equipped kitchen and access to the **terrace** and the **garden**, 2 bedrooms, bathroom with shower and toilet, walk-in closet and an entrance hall. The 2nd floor consists of a quiet zone containing a master bedroom with a **balcony**, another 2 bedrooms, 2 fitted walk-in closets, a hall and a bathroom with a bathtub and a toilet.

**Completely renovated house** from the early 20th century. **Air-conditioning** in the master bedroom, washer, dryer, dishwasher, microwave oven, built-in wardrobes, central heating from the boiler room, security system, cellar, **shared garden of about 800 m<sup>2</sup>** with trampoline and playground, common wine cellar. **Two garage spaces** available for CZK 2500/space/month. Deposit for common building charges, energies, internet, security system and garden maintenance CZK 10,000/month. The apartment will be fitted with **new wooden floors, kitchen tiles and enlarged terrace**. Available from September 2021 or earlier based on agreement.



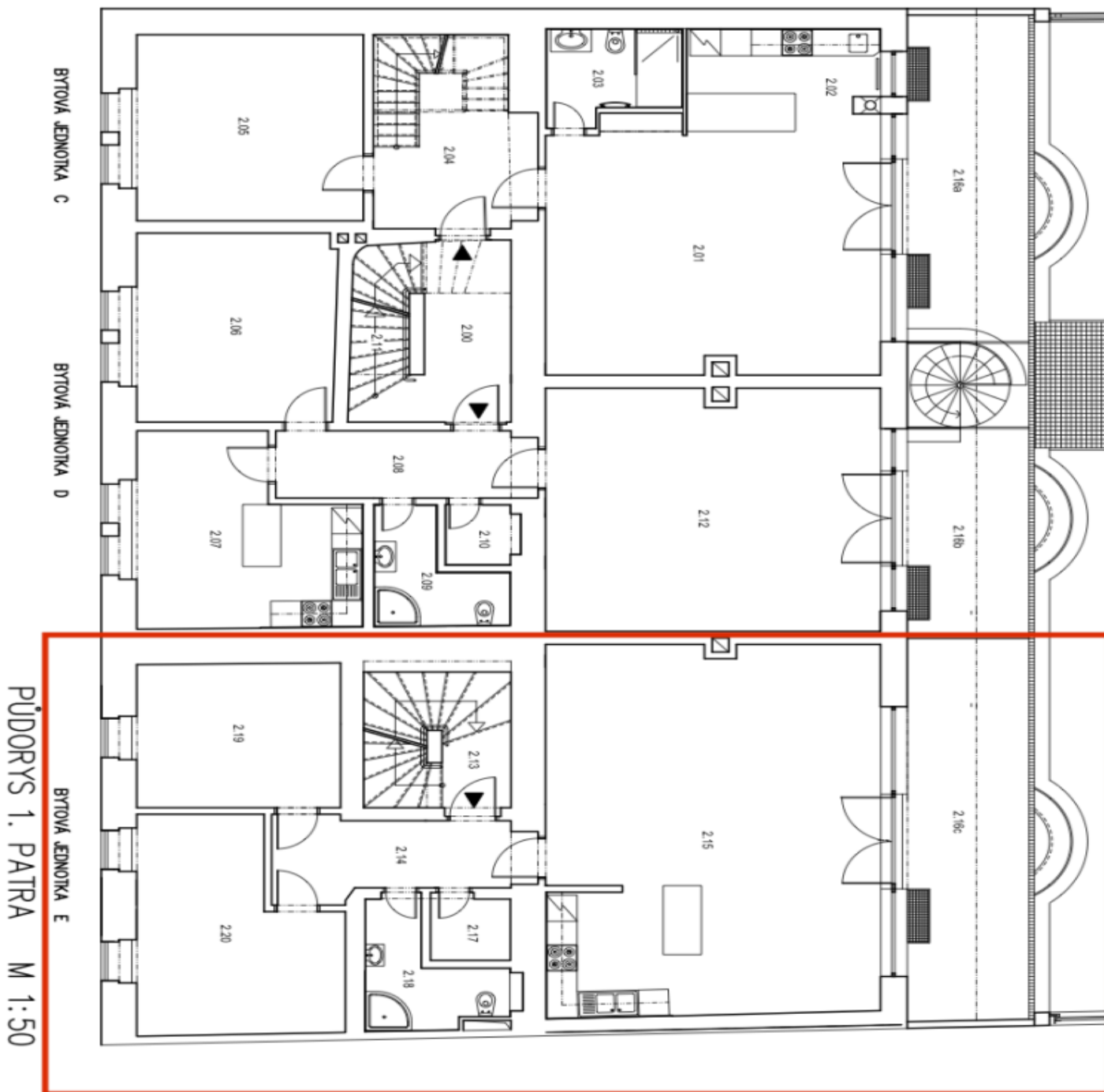
\* Area of the unit according to the Civil Code. The area consists of the sum total area of the entire unit bounded by perimeter walls.

# Apartment Five-bedroom (6+kk)

Rented

228 m<sup>2</sup>, Prague 6, Břevnov, Šlikova

TABUĽKA MIESTNOSTÍ		
ČÍSLO MIESTNOSTI	NÁZEV	POV.
<b>SPOLNÉ MIESTNOSTI PRE BYTOVÉ JEDNOTKY</b>		
2.00	ODPOVA	329
<b>BYTOVÁ JEDNOTKA C</b>		
2.01	ODPOVA POKOJ	46,8
2.02	KUCHYŇA	49,210
2.03	KC. KÚPEĽNICA	5,35
2.04	SPOLNOSTI, ODPOVA	14,41
2.05	LOŽNICA	19,38
2.10A	TERASA	16,28
<b>BYTOVÁ JEDNOTKA D</b>		
2.06	LOŽNICA	11,27
2.07	KUCHYŇA	11,28
2.08	PRÁDARŇA	4,47
2.09	KC. SPYŇOVIA	5,25
2.10	ŠALUNY	1,45
2.11	SPOLNOSTI	5,41
2.12	ODPOVA POKOJ	16,43
2.10B	TERASA	11,29
<b>BYTOVÁ JEDNOTKA E</b>		
2.13	SPOLNOSTI	9,54
2.14	PRÁDARŇA	6,95
2.15	ODPOVA POKOJ, KUCHYŇA	55,94
2.17	ŠALUNY	2,38
2.18	KC. SPYŇOVIA	5,40
2.19	POKOJ	15,62
2.20	POKOJ	17,46
2.10C	TERASA	20,34



# Apartment Five-bedroom (6+kk)

Rented

228 m², Prague 6, Břevnov, Šlikova

