

Apartment Four-bedroom (5+kk)

Rented

140 m², Prague 7, Bubeneč, Korunovační



Apartment Four-bedroom (5+kk)

Rented

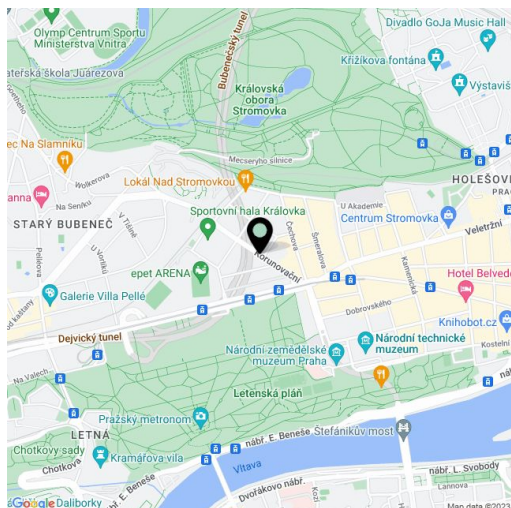
140 m², Prague 7, Bubeneč, Korunovační

Total area	170 m ²
Floor area*	140 m ²
Terrace	30 m ²
Parking	-
Cellar	Yes
PENB	G
Reference number	39533
Available from	Immediately

This high-standard, unfurnished duplex penthouse with a terrace, views of Prague Castle and Petrin Hill, and a parking space is located on the top 6th floor of a classic, completely renovated apartment building with an elevator in a popular part of Prague 7 in Letná between the Letenské sady and Stromovka parks. This easily accessible area near a tram stop and an entrance to a tunnel complex, offers a wide selection of cafes and bistros, schools from kindergartens to a high school, and sports ground.

The entrance level is configured as a master bedroom with an en-suite bathroom (bathtub, toilet, and sink), another 3 bedrooms, a second bathroom (shower and toilet), and an entrance hall. The upper level consists of a living room lit by **large atelier windows**, a fully equipped kitchen, a dining room, and access to a **terrace providing breathtaking panoramic views** of the city and large parks.

Air-conditioning throughout the apartment, **wooden floors**, tiles in the bathrooms, **Miele** kitchen appliances (dishwasher, microwave, coffee maker, American fridge, wine cellar, induction hob), washer, dryer, plenty of built-in wardrobes in the entrance hall, 2 bedrooms, an alarm, an **8 sq. m. cellar storage unit**, and an elevator to the mezzanine. Common building charges and water CZK 4,000/month. Deposit for gas CZK 2,940/month and electricity CZK 3,640/month.

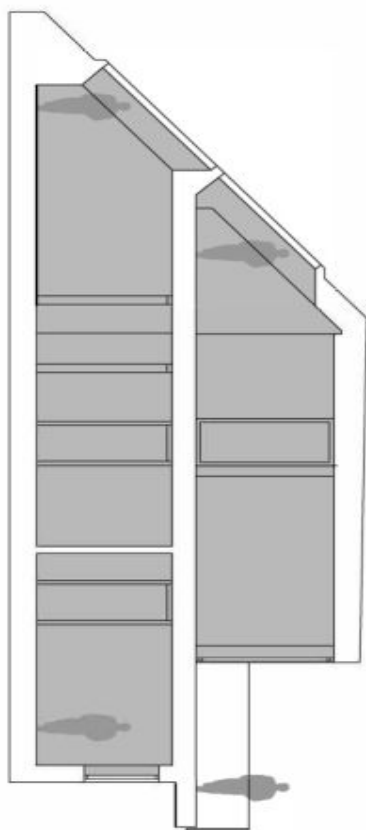


* Area of the unit according to the Civil Code. The area consists of the sum total area of the entire unit bounded by perimeter walls.

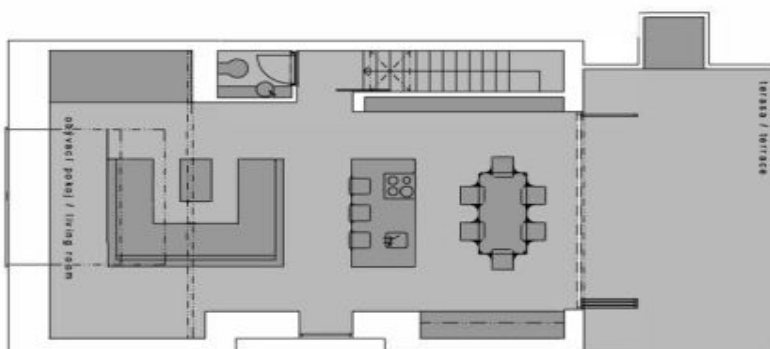
Apartment Four-bedroom (5+kk)

Rented

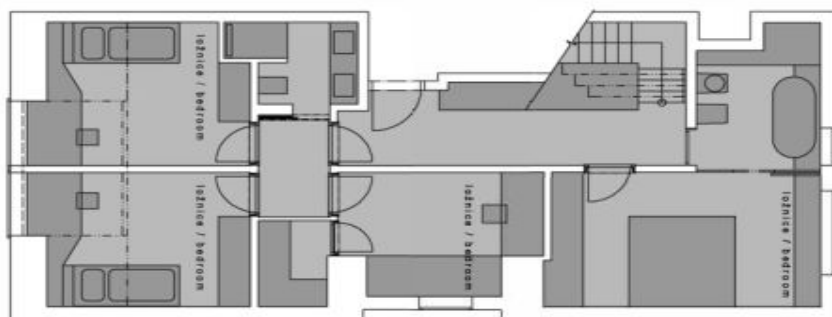
140 m², Prague 7, Bubeneč, Korunovační



REZ / SECTION



8. NP / 8 TH FLOOR



7. NP / 7 TH FLOOR