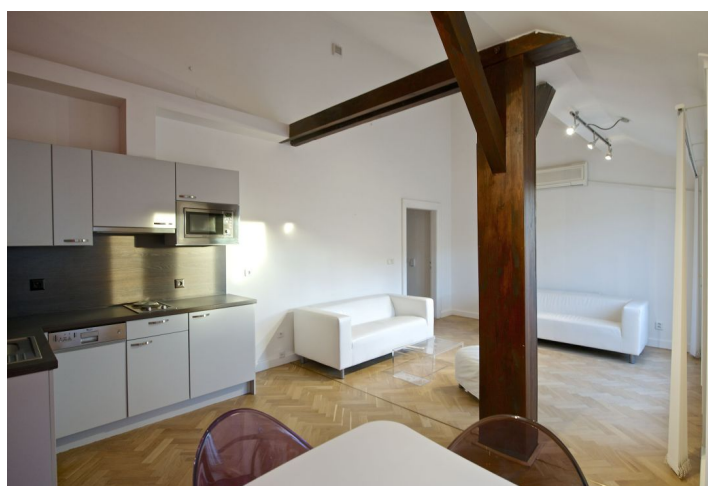


## Apartment One-bedroom (2+kk)

Rented

72 m<sup>2</sup>, Prague 1, Malá Strana, Všešrdova



# Apartment One-bedroom (2+kk)

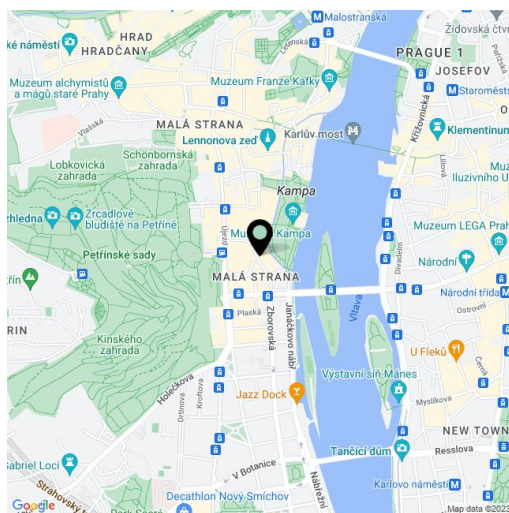
**Rented**72 m<sup>2</sup>, Prague 1, Malá Strana, Všešrdova

Total area	79 m <sup>2</sup>
Floor area*	72 m <sup>2</sup>
Terrace	7 m <sup>2</sup>
Parking	-
Cellar	Yes
PENB	G
Reference number	3953
Available from	Immediately

**Bright air-conditioned 1-bedroom attic flat with a terrace and a view of the Prague Castle and Petřín Hill on the fifth floor of a refurbished historic building noted for being the first one in Prague to have an elevator installed.**

Located in a very nice part of the city, in the picturesque Malá Strana steps from the Vltava riverbank and Kampa Park. The apartment includes one bedroom, living room with a fully fitted open kitchen and terrace access, bathroom with tub, toilet, and entry hall.

Preserved original details, parquet floors, built-in wardrobes, dishwasher, combination oven, telephone line, Internet, audio entry phone. Basement storage of 13.5 m<sup>2</sup> can be rented at EUR 4.20/m<sup>2</sup>/month. Very good transportation connections, tram stop is just a minute walk from the building. Local amenities include shops, restaurants, bars, cafes, services, parks etc. Parking in a paid zone on the street. Common building charges and utilities approx. CZK 4.000/month.



\* Area of the unit according to the Civil Code. The area consists of the sum total area of the entire unit bounded by perimeter walls.