

Warehouse space

Ask for price

4 474 m², Ostrava-město, Ostrava, Halasova

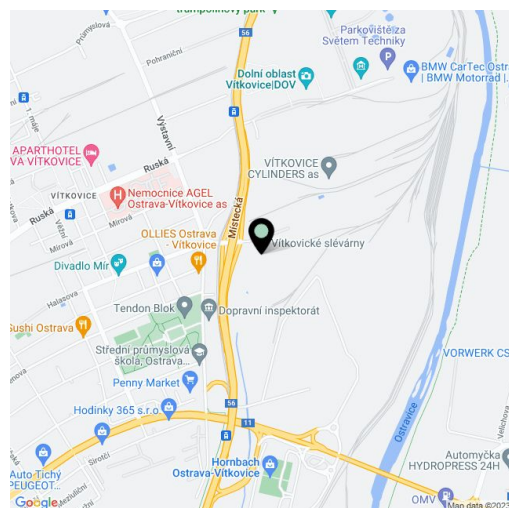


Warehouse space

Ask for price

4 474 m², Ostrava-město, Ostrava, Halasova

Total area	4 474 m ²
Available area for rent	4 474 m ²
Office area	390 m ²
Ceiling height	10 m
Floor loading capacity	5 t/m ²
Column grid structure	—
Structure	Reinforced concrete structure
PENB	G
Reference number	39396



4 084 sq.m. of warehouse and **390 sq.m.** of office space incl. background for lease in an area located in Ostrava - Vitkovice. After a demanding rehabilitation, the 44ha brownfield is ready for the construction of a modern commercial-industrial park. The tenants of the park have at their disposal premises of various sizes suitable for companies operating in a wide range of commercial and production act.

Location:

The park is located in the wider center of Ostrava in the area of Ostrava Vitkovice with excellent transport accessibility. Direct connection to the highway leading to Brno and Poland. There are 3 entrances to the park. There is a tram stop near the complex.

Features and Services:

- All infrastructure available on site
- High standards of buildings
- A functional railway along the eastern perimeter of the compound
- A large number of parking spaces for cars and trucks

Industrial/Warehouse space:

- Flexible unit layouts
- Variable units from 1,500 sq.m.
- 4 drive-ins
- 28 docks with loading bridge
- Floor load: 5t/sq.m.
- Clear height of storage areas: 10-12 m
- Column module: 24×12 m
- Loading yard: 35 m
- Sprinklersystem
- Infrared emitters /ceiling heating units
- BREEAM Very Good

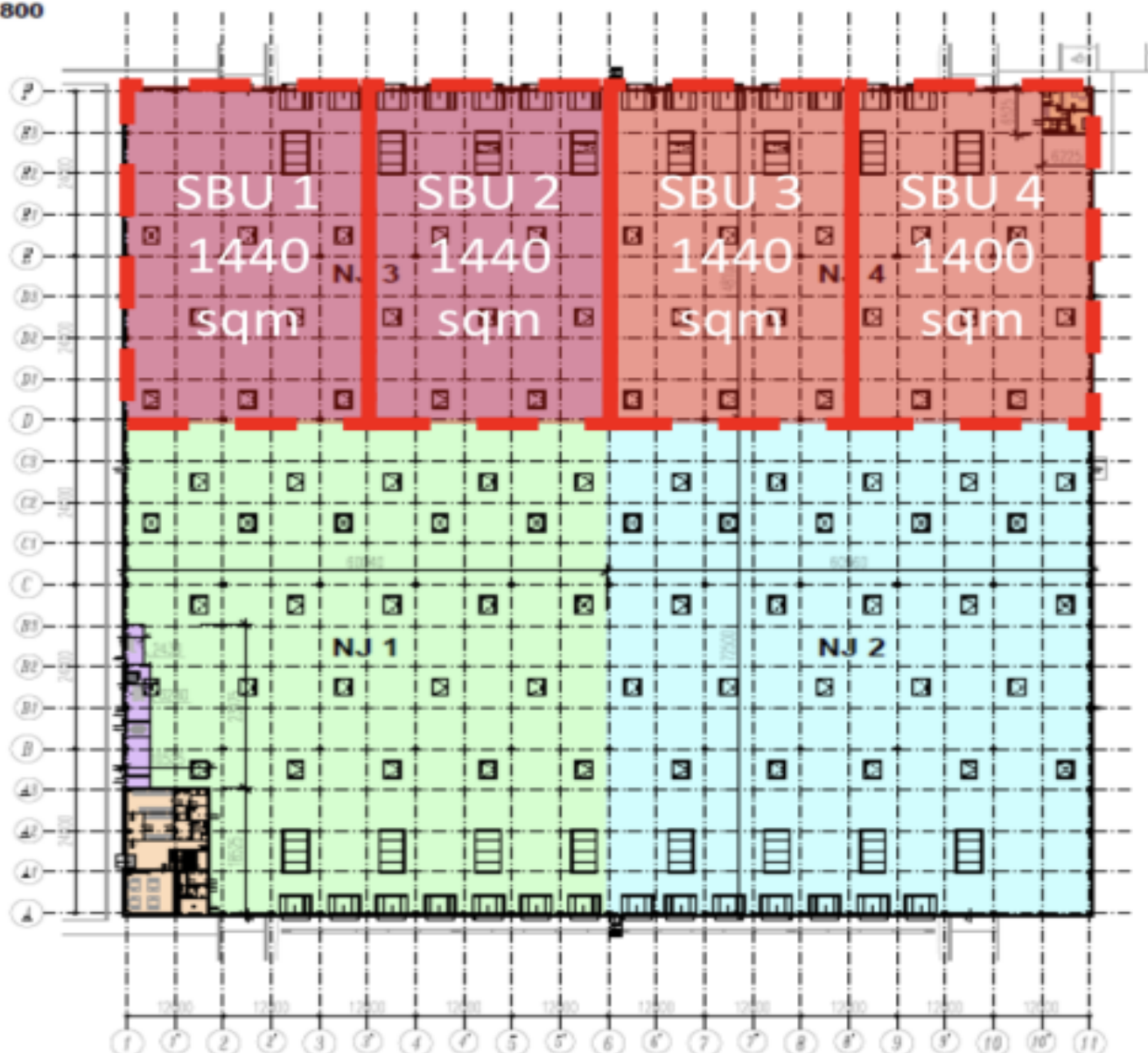
Office:

- Flexible office layout
- Air-conditioning

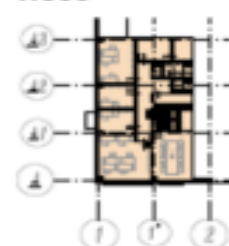
Rental and service charges listed without VAT. Lessee pays no commission.

4 474 m², Ostrava-město, Ostrava, Halasova

SO705 - HALA M2

PŮDORYS 1.NP
1:800PLOCHY GIA
SKLAD

NJ 1	4 084,39 m ²
NJ 2	4 390,60 m ²
NJ 3	2 887,92 m ²
NJ 4	2 872,32 m ²
SOCIÁLNĚ-ADMINISTRATIVNÍ VESTAVBY	430,33 m²
NJ 1 - 1.NP	194,73 m ²
NJ 1 - 2.NP	194,98 m ²
NJ 4 - 1.NP	40,62 m ²
TECHNICKÉ ZÁZEMÍ	73,78 m ²

PŮDORYS 2.NP
1:800

21.4.2023

4 474 m², Ostrava-město, Ostrava, Halasova

Budova	Zastavěná plocha m ²
L1	28 516
L2	29 524
L3	16 438
M1	10 516
M2	14 884
M3	14 884
M4	10 516
S1	38 444
S2	7 564
S3	4 180
S4	4 180
S5	4 180
XS1	1 444
XS2	1 444
Celkem	152 114

Warehouse space

Ask for price

4 474 m², Ostrava-město, Ostrava, Halasova



LEGENDA

- List of infrastructure and zoning elements: I/1 - KOMUNIKACE - HLAVNI TRASY, I/2 - KOMUNIKACE - HLAVNI TRASY, etc.

Table with 4 columns: Objekty, Objednatel, Cena, and others. Rows include L1, L2, L3, M1, M2, M3, M4, S1, S2, S3, S4, S5.

Summary table with 4 columns: Celkem, Objednatel, Cena, and others. Totals: 4 474, 2 600, 28 838, 4 770, 4 100, 348.

* 4/6 - platba za parkovací místo není zahrnutá do ceny, za 275 Kč za den třikrát měsíčně parkob.
** 4/6 - platba za parkovací místo není zahrnutá do ceny, za 275 Kč za den třikrát měsíčně parkob.