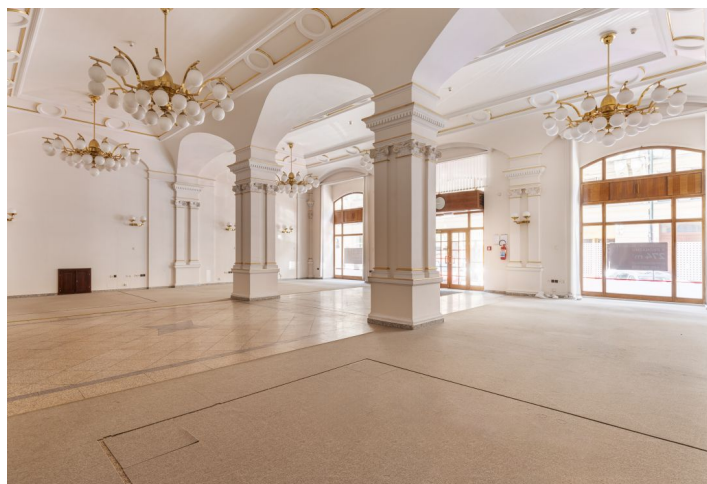
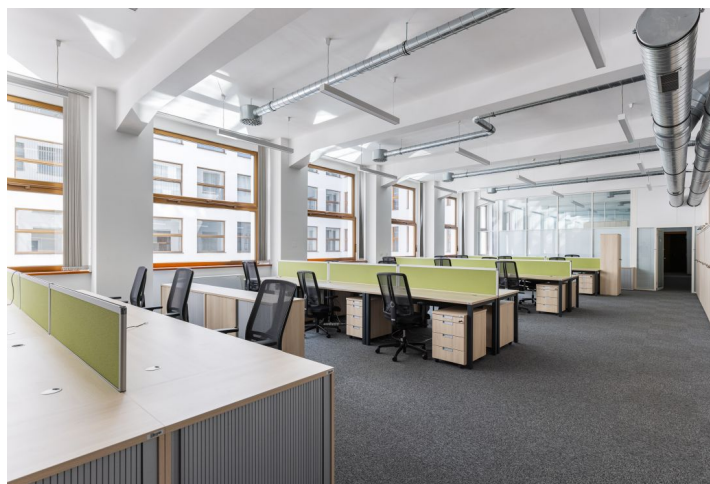


## Office building

Rented

Prague 1, Nové Město, Václavské náměstí



## Office building

**Rented**

Prague 1, Nové Město, Václavské náměstí

Service price	140 CZK monthly per m <sup>2</sup>
Total building area	20 000 m <sup>2</sup>
Tenant consumption	—
Parking	CZK 6 000 / pp / month
Parking service charges	—
Parking ratio	—
Certification	—
PENB	G
Reference number	39255

**Modern office space for lease in a building located in the historic city center on Wenceslas Square. The listed building was built in the 1930s by Czech architect Ing. František Roith. The size of a typical floor is 1,700 sq. m. The premises are equipped with office furniture and there is a terrace and garage parking available.**

**Maximum lease term: end of 2026****Location:**

Excellent accessibility by public transport. All metro lines are within a 2-minute walking distance—the Muzeum (line A, C), Můstek (line A, B) metro stations and the Václavské náměstí and Vodičkova tram stops. In the vicinity of the building are also all civic amenities, boutiques, cafes, restaurants, banks, and a shopping center.

**Features and services:**

- Reception
- Air-conditioning
- Computer network, optical cabling
- 24/7 access via cards
- Bike parking
- Canteen
- Office furniture
- Shower
- Parking spaces in the garage
- Storage space
- Terraces

Lease and service charges listed without VAT. Lessee pays no commission.