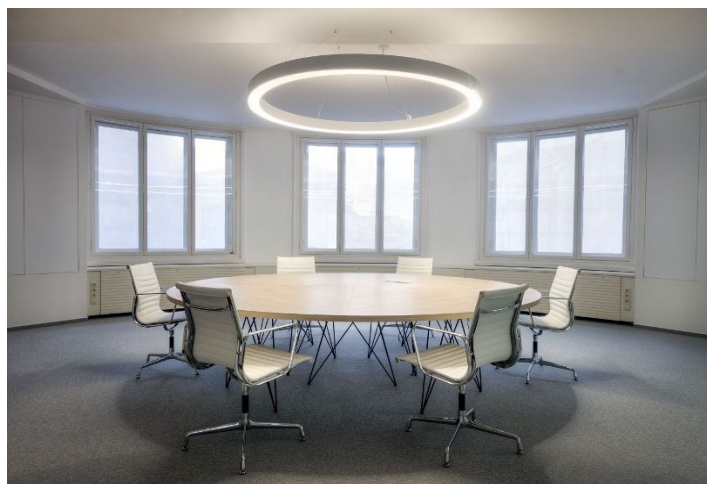
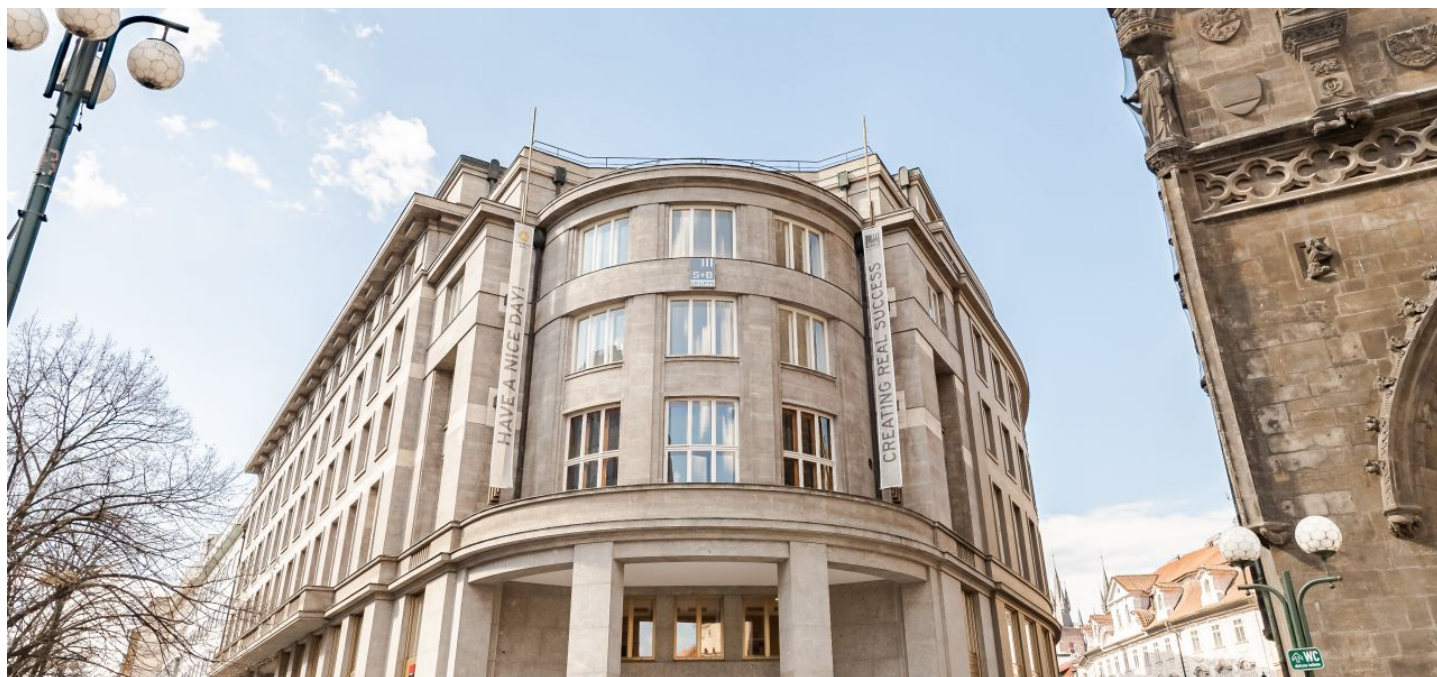


Office building

Rented

Prague 1, Staré Město, Na Příkopě



Office building

Rented

Prague 1, Staré Město, Na Příkopě

Service price	150 CZK monthly per m ²
Total building area	14 653 m ²
Tenant consumption	—
Parking	-
Parking service charges	—
Parking ratio	—
Certification	—
PENB	G
Reference number	39245

Completely renovated office space for lease in a majestic building located in the historic city center near Old Town and Wenceslas squares. The building combines historically protected interiors with the latest design trends. In the vicinity of the building is also the late Gothic Powder Tower, which is considered one of the main symbols of Prague. The size of a typical floor is 1,600 sq. m. On the 5th floor is a terrace that offers unique views. Parking spaces are available in facilities within walking distance.

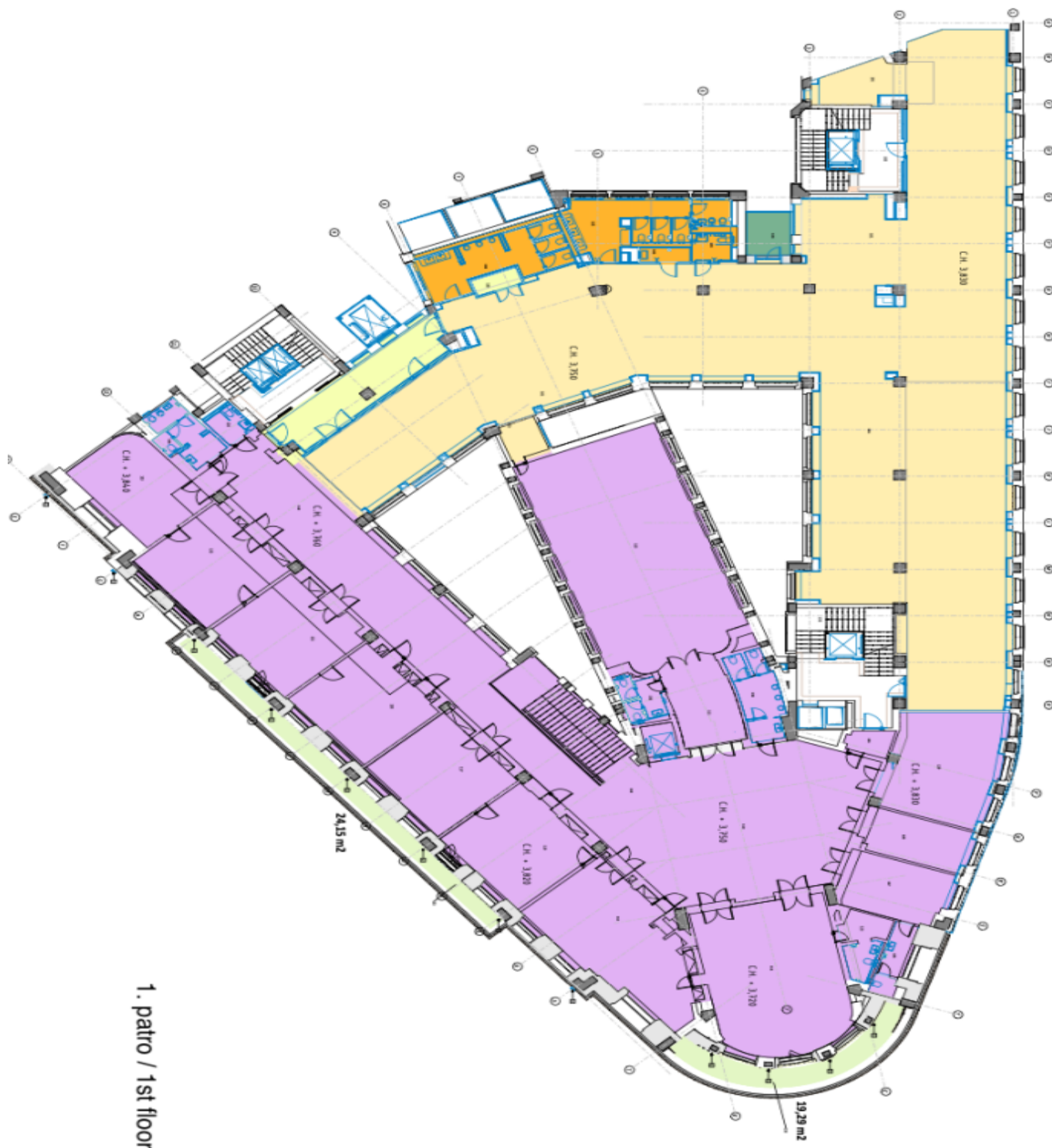
Location:

Excellent accessibility by public transport. The Náměstí Republiky metro station (line B) can be reached in 2 minutes, the Hlavní nádraží metro station in 8 minutes, the Náměstí Republiky tram stop in 2 minutes, and The Václav Havel Airport is a 35-minute drive away. In the vicinity of the building are also all civic amenities, boutiques, cafes, restaurants, banks, and a shopping center.

Features and services:

Openable windows
24/7 access
CCTV
Building management system and power backup generator
Toilets
HVAC
Elevators
Lighint
Sprinklers
EPS smoke detectors

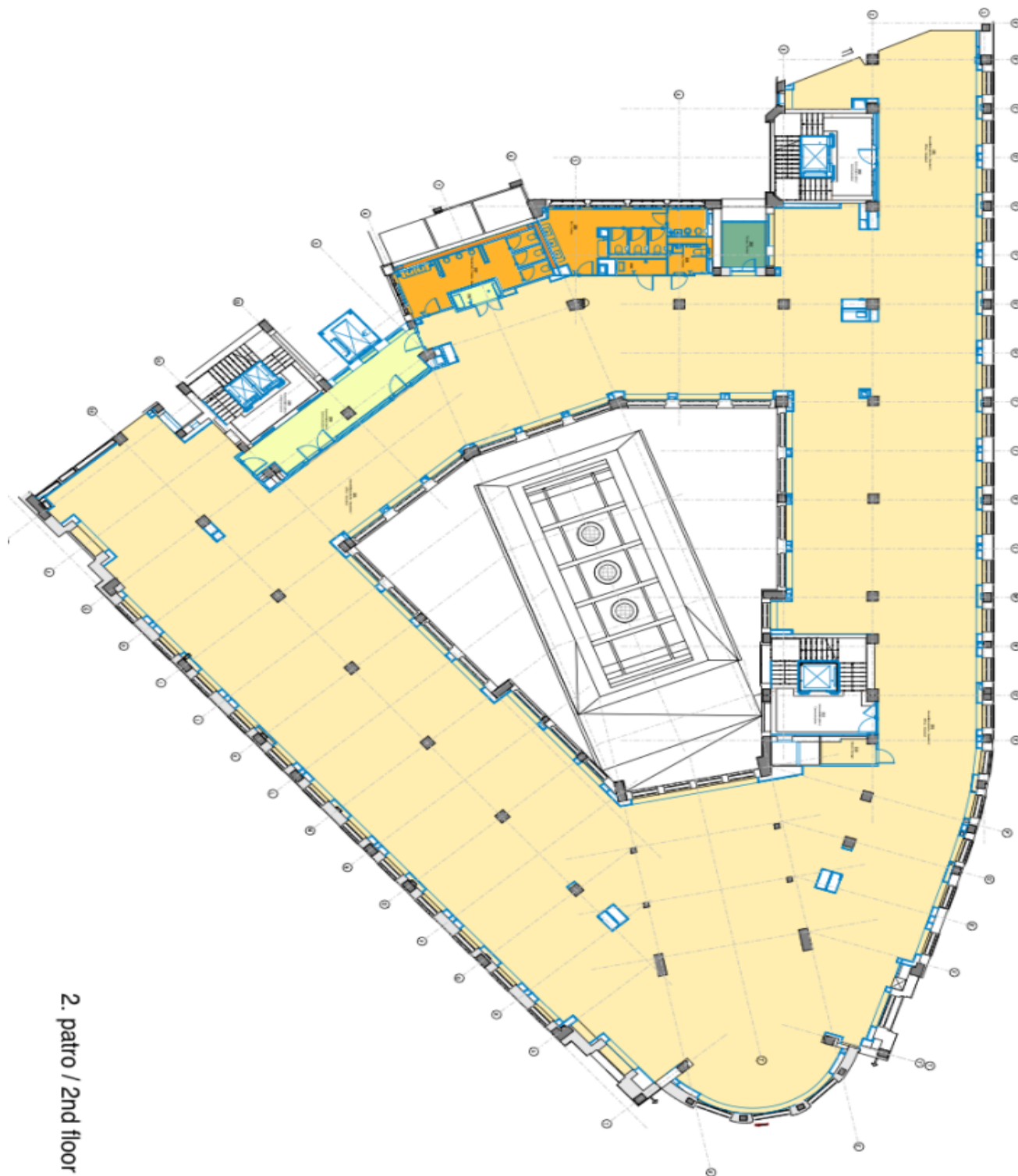
Lease and service charges listed without VAT. Lessee pays no commission.



Office building

Prague 1, Staré Město, Na Příkopě

Rented

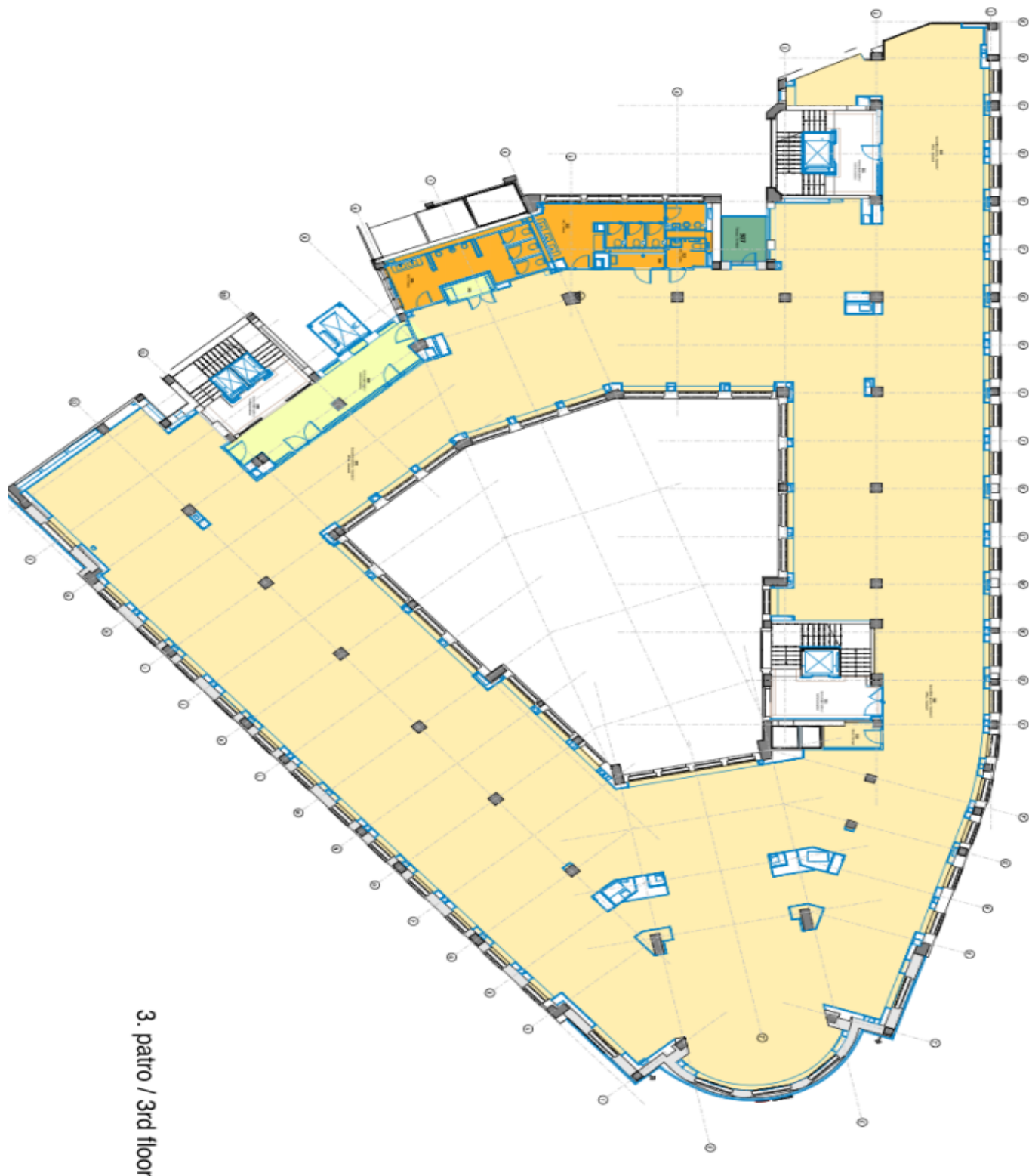


2. patro / 2nd floor

Office building

Rented

Prague 1, Staré Město, Na Příkopě

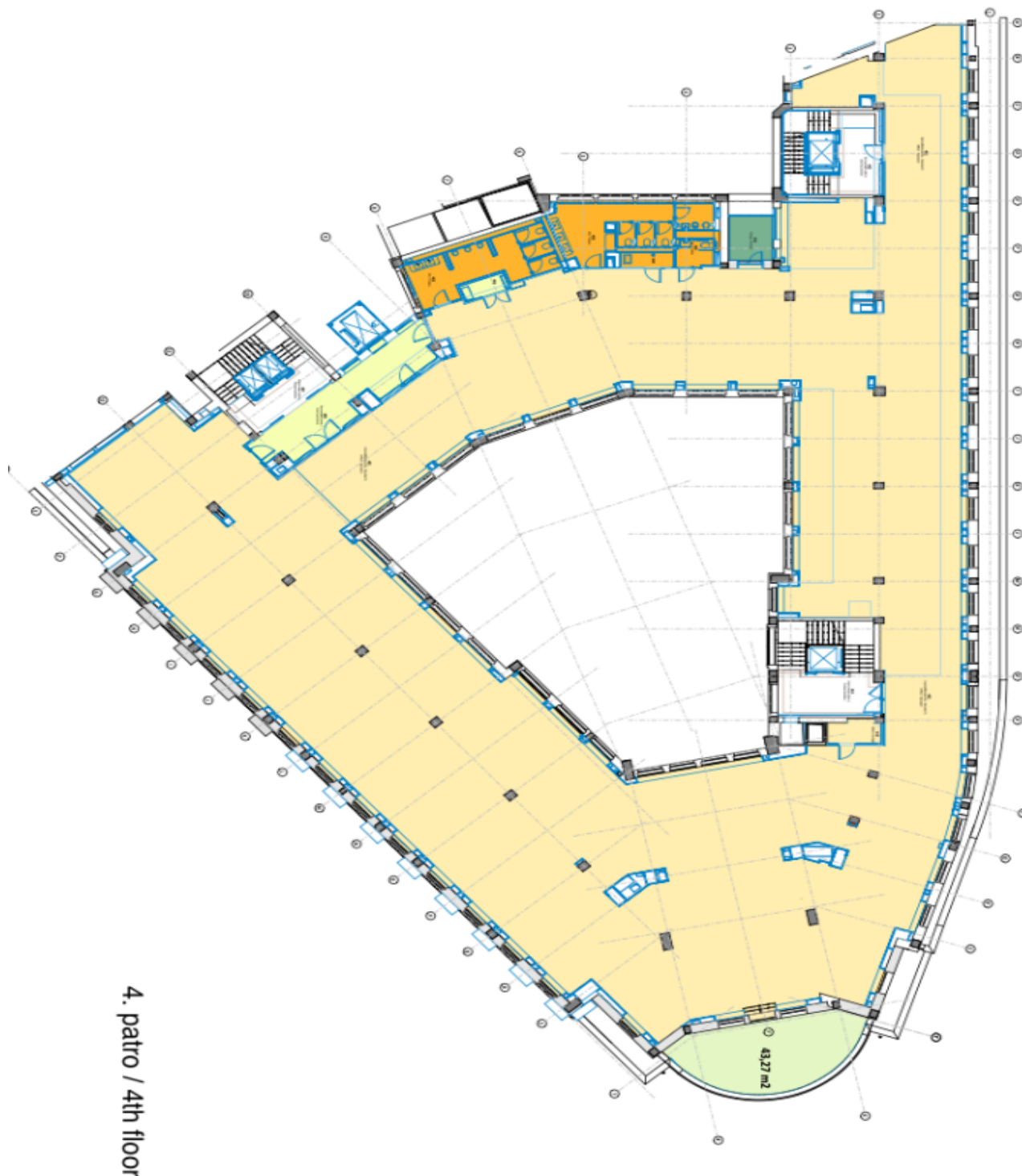


3. patro / 3rd floor

Office building

Prague 1, Staré Město, Na Příkopě

Rented



Office building

Prague 1, Staré Město, Na Příkopě

Rented



5. patro / 5th floor