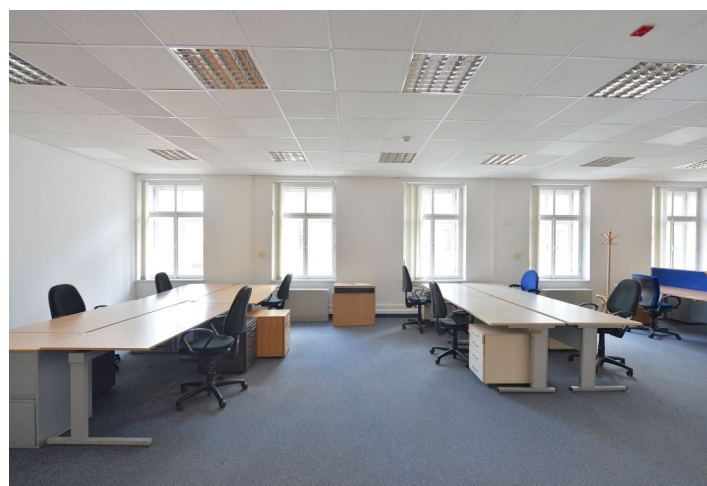


Office space

€ 12.75 - 14.35 / m² | CZK 320 - 360 / m²

Prague 2, Nové Město, Lazarská



Office space

€ 12.75 - 14.35 / m² | CZK 320 - 360 / m²

Prague 2, Nové Město, Lazarská

Service price	155 CZK monthly per m ²
Available area	483 m ²
Cellar	-
Parking	CZK 4 500 / ps / month
PENB	D
Reference number	39096

Office premises on the 4th floor of the administrative building located in close vicinity to Wenceslas Square and Charles Square.

Location:

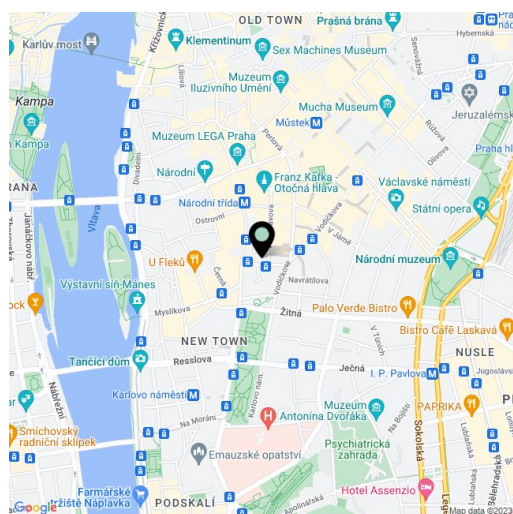
The exclusivity of space is enhanced by an attractive location in the financial and commercial center, with excellent access to public transportation and private parking. Excellent access by public transport - within walking distance of metro station Můstek (lines A, B), Národní třída (line B) and Karlovo Náměstí (line B), tram stops in front of the building.

Features and Services:

- Central reception
- 24/7 access and security service
- Electronic card access
- Optical fiber cable connection
- Camera system
- Fire alarm system
- Central air-conditioning system
- Central cooling system
- Underground parking space

Images might not accurately reflect the current state of the premises.

Rental price is exempt from VAT. Service charges are listed without VAT and include energy consumption. Lessee pays no commission.





Adminis
Lazarská
Rozdělení obí