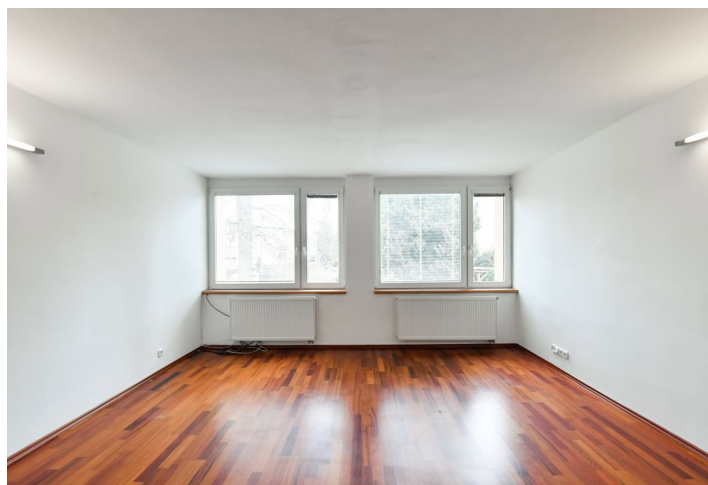


## House Four-bedroom (5+kk)

Rented

237 m<sup>2</sup>, Prague 8, Kobylisy, Javorová



# House Four-bedroom (5+kk)

**Rented**237 m<sup>2</sup>, Prague 8, Kobylisy, Javorová

Plot	201 m <sup>2</sup>
Foot print	79 m <sup>2</sup>
Garden	122 m <sup>2</sup>
Parking	Garage and parking on the plot.
Garage	Yes
Cellar	-
PENB	G
Reference number	38975
Available from	Immediately

This is a 4-bedroom 2-bathroom townhouse situated in a quiet street in a residential neighborhood right on the edge of Ďáblický Háj Forest. Conveniently located for the D8 Motorway, Teplice and Mladá Boleslav exits, and sports facilities and shopping (Letňany, Čakovice, Měšice). There is a bus stop five minutes from the building (five minutes to Ládví metro station).

The ground floor includes a living room / guest bedroom with a kitchenette and access to the terrace and garden, a shower room with a toilet, and an entrance hall with built-in wardrobes and garage access. The first floor offers a living room with a dining area and a fully fitted open plan kitchen. The second floor features three bedrooms plus a bathroom with a bathtub and a toilet.

Laminated floors, tiles, exterior blinds, gas boiler, washing machine, dishwasher, microwave oven, gate operated by remote control. **Garage and parking on the plot.** Utilities are billed separately.

