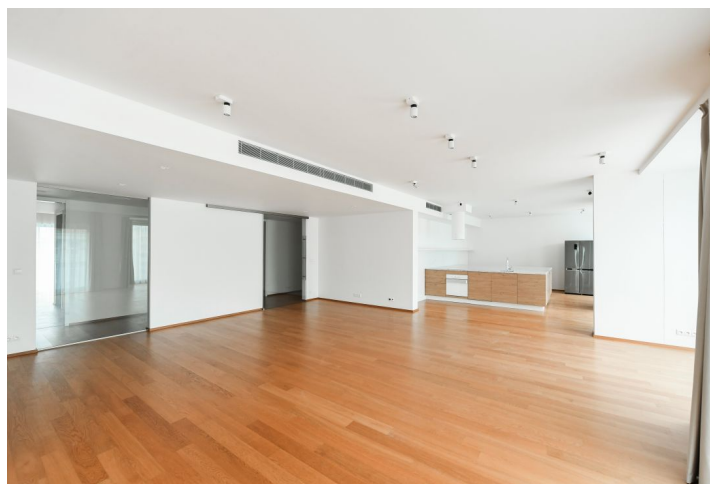


## Apartment Four-bedroom (5+kk)

Rented

330 m<sup>2</sup>, Prague 1, Nové Město, Purkyňova



## Apartment Four-bedroom (5+kk)

Rented

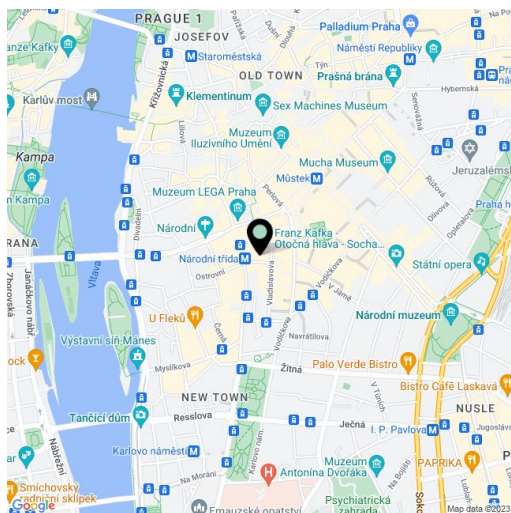
330 m<sup>2</sup>, Prague 1, Nové Město, Purkyňova

Total area	361 m <sup>2</sup>
Floor area*	330 m <sup>2</sup>
Loggia	31 m <sup>2</sup>
Parking	Two garage parking spaces.
Garage	Yes
Cellar	Yes
Service price	Monthly deposit for services (incl. security), water, and heating: CZK 31,355/month. Electricity - transferred to the tenant.
PENB	C
Reference number	38850
Available from	Immediately

This exceptional apartment with enclosed balconies along its whole perimeter and direct access from the elevator is on the 5th floor of a modern building that is part of the multipurpose QUADRIO complex. Conveniently located in the very city center with full amenities within instant reach, 100 m from the Národní třída metro station (line B) and tram links, just a few minutes' walk to Wenceslas Square. Building amenities include underground garage parking and security.

The interior features a huge living room with a dining area, a fully fitted open plan kitchen, and access to several enclosed balconies. There is a master bedroom with a walk-in closet, an en-suite bathroom and access to three enclosed balconies, two bedrooms with en-suite bathrooms - one also with a walk-in closet, a fourth bedroom, a laundry room, an additional guest toilet, and an entrance hall. All bedrooms have access to the balcony.

High-quality materials and finishes, hardwood floors, tiles, floor-to-ceiling windows, security entry door, central heating, cooling system, washer, dryer, induction cooktop, dishwasher, cellar, bike/pram storage. Two on-site garage parking spaces are included.



\* Size of the unit according to the Housing Act.  
The area consists of the sum total of the internal area of every room.