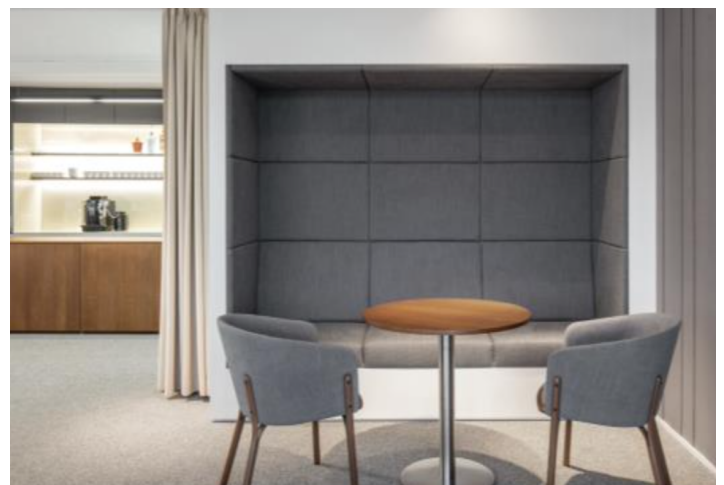
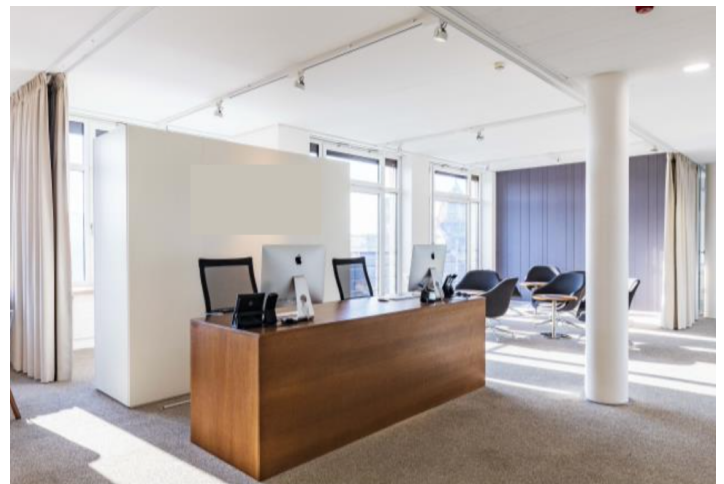


Office space

Rented

Prague 1, Nové Město, Na Poříčí



Office space

Rented

Prague 1, Nové Město, Na Poříčí

Service price	150 CZK monthly per m ²
Available area	240 m ²
Cellar	-
Parking	-
PENB	G
Reference number	38623

Office space for sublease until December 2027 on the 6th floor of an office building in the historic center of Prague with unique views of the city. A distinctive feature of the building is its magnificent atrium, which imparts a unique atmosphere. Nearby are all civic amenities: restaurants, cafes, shops, and hotels.

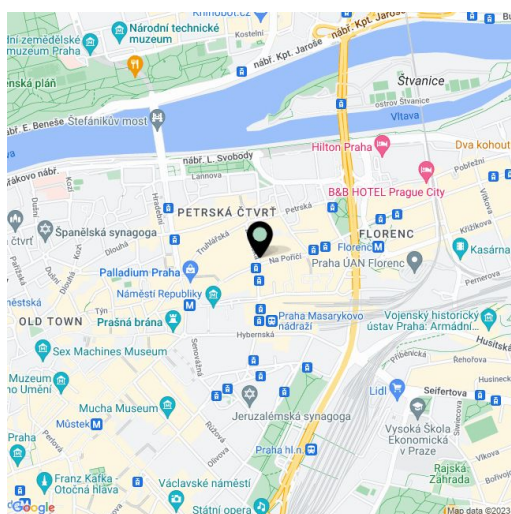
Location:

Great accessibility by public transport. Directly opposite is the metro station Náměstí Republiky (line B) and tram stop Náměstí Republiky and Dlouhá třída.

Features and services:

- Openable windows
- Air-conditioning
- Central heating
- 24/7 security
- CCTV
- Elegant reception

Rental and service charges listed without VAT. Lessee pays no commission.



Office space

Rented

Prague 1, Nové Město, Na Poříčí

