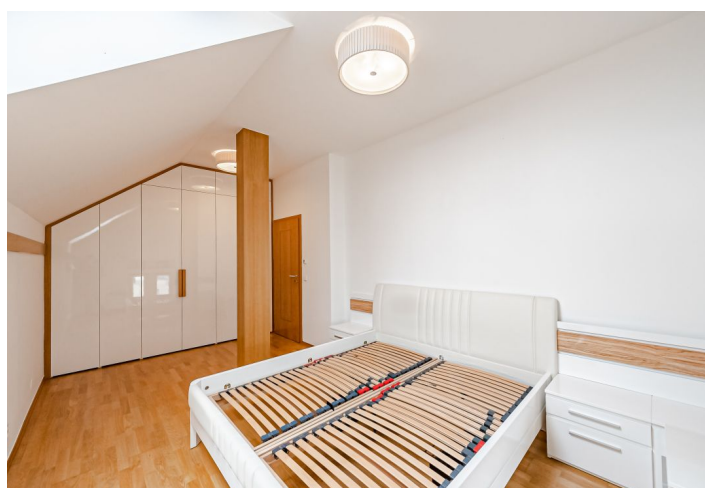
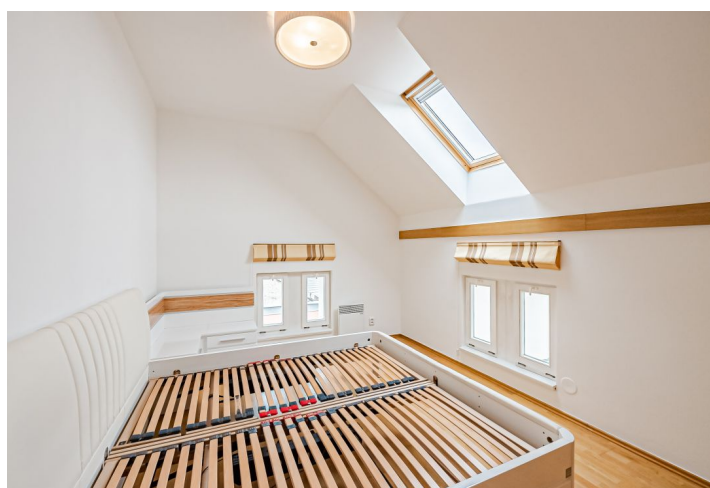


## Apartment Three-bedroom (4+kk)

Rented

115 m<sup>2</sup>, Prague 6, Břevnov, Kukulova



## Apartment Three-bedroom (4+kk)

Rented

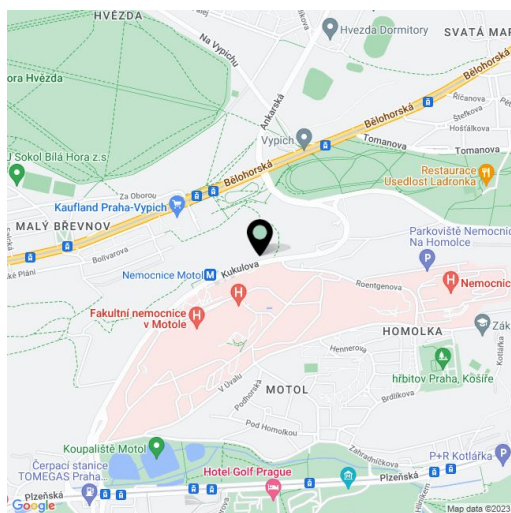
115 m<sup>2</sup>, Prague 6, Břevnov, Kukulova

Total area	115 m <sup>2</sup>
Parking	Garage and outside parking.
Garage	Yes
Cellar	-
PENB	D
Reference number	38593
Available from	Immediately

This completely refurbished, unfurnished 3-bedroom split-level attic apartment is on the first floor of a townhouse in a private gated complex with 15 units, an outdoor swimming pool, a sauna, a children's playground and a summer kitchen. Part of a meticulously renovated historic Šafránka homestead, set on the edge of the Motol park, 300 m from the Nemocnice Motol metro station and the Motol Hospital, just steps from a bus stop. Nearby is a shopping center and the popular Ladronka Park, a swimming pool, the Břevnov Monastery and the Hvězda Park. Location with quick access to the airport and exit road to Plzeň (and Germany) and Karlovy Vary.

The lower level offers a comfortable living room with a dining area and a fully fitted open plan kitchen, a toilet, and an entrance hall. The upper floor features 3 bedrooms - two with built-in wardrobes and storage, a bathroom including a **massage bath**, a walk-in shower, a bidet and a toilet, and a utility room.

Far reaching green views, **hardwood floors**, stone tiles, wooden stairs, security entry door, electric heating, washer, dryer, Bosch, AEG and Siemens kitchen appliances, dishwasher, microwave oven, video entry phone, storage. No lift. A **garage parking space** and an **outdoor space** are included. Monthly deposit for service charges and utilities: CZK 8,400.



\* Area of the unit according to the Civil Code. The area consists of the sum total area of the entire unit bounded by perimeter walls.