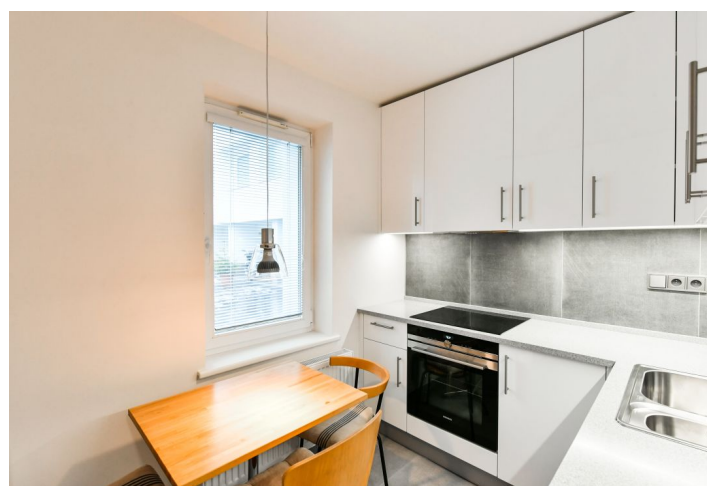
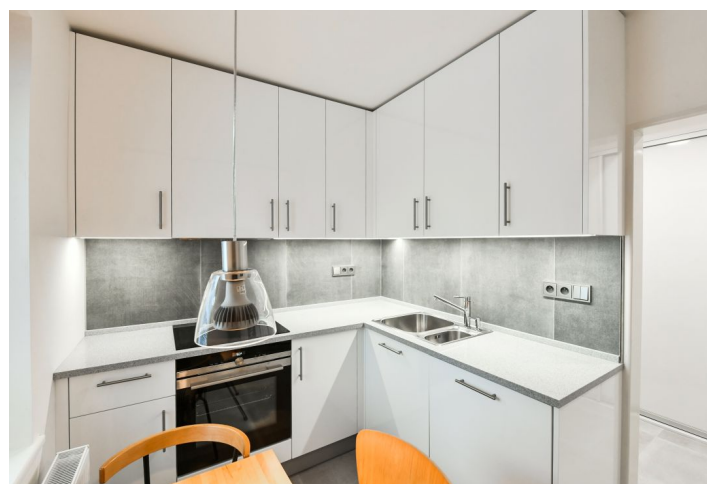


## Apartment One-bedroom (2+1)

Rented

61 m<sup>2</sup>, Prague 8, Libeň, Přádova



# Apartment One-bedroom (2+1)

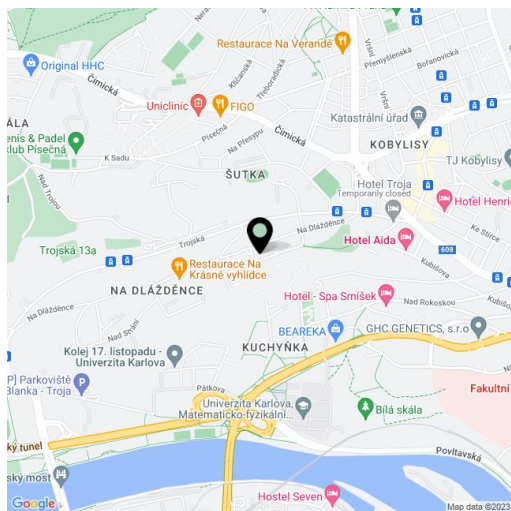
**Rented**61 m<sup>2</sup>, Prague 8, Libeň, Přádova

Total area	68 m <sup>2</sup>
Floor area*	61 m <sup>2</sup>
Terrace	7 m <sup>2</sup>
Parking	-
Cellar	Yes
PENB	C
Reference number	38482
Available from	Immediately

Boasting a terrace and far reaching green views, this is a fully refurbished and furnished apartment on the first floor of a well kept residential building with access to the common garden. Set in a slope in close vicinity of the Bílá skála forest park and the Draháňské Valley, in a quiet residential neighborhood with quick access to the city center. Located near a tram stop with connections to Kobylisy metro station and within easy reach of complete amenities and services.

The apartment includes a living room with **terrace** access, a fully fitted eat-in kitchen, a bedroom, a shower room, a separate toilet with a bidet shower, and an entrance hall with built-in wardrobes.

Earthenware tiles, security entry door, heated floor in the bathroom and in the toilet, blinds, insect net on the terrace, gas boiler, washing machine, Siemens appliances, dishwasher, induction cooktop, microwave oven, alarm, mobile air conditioning unit, **cellar**. Monthly deposit for building charges and water CZK 1.750. Gas and electricity will be transferred to the tenant.



\* Area of the unit according to the Civil Code. The area consists of the sum total area of the entire unit bounded by perimeter walls.