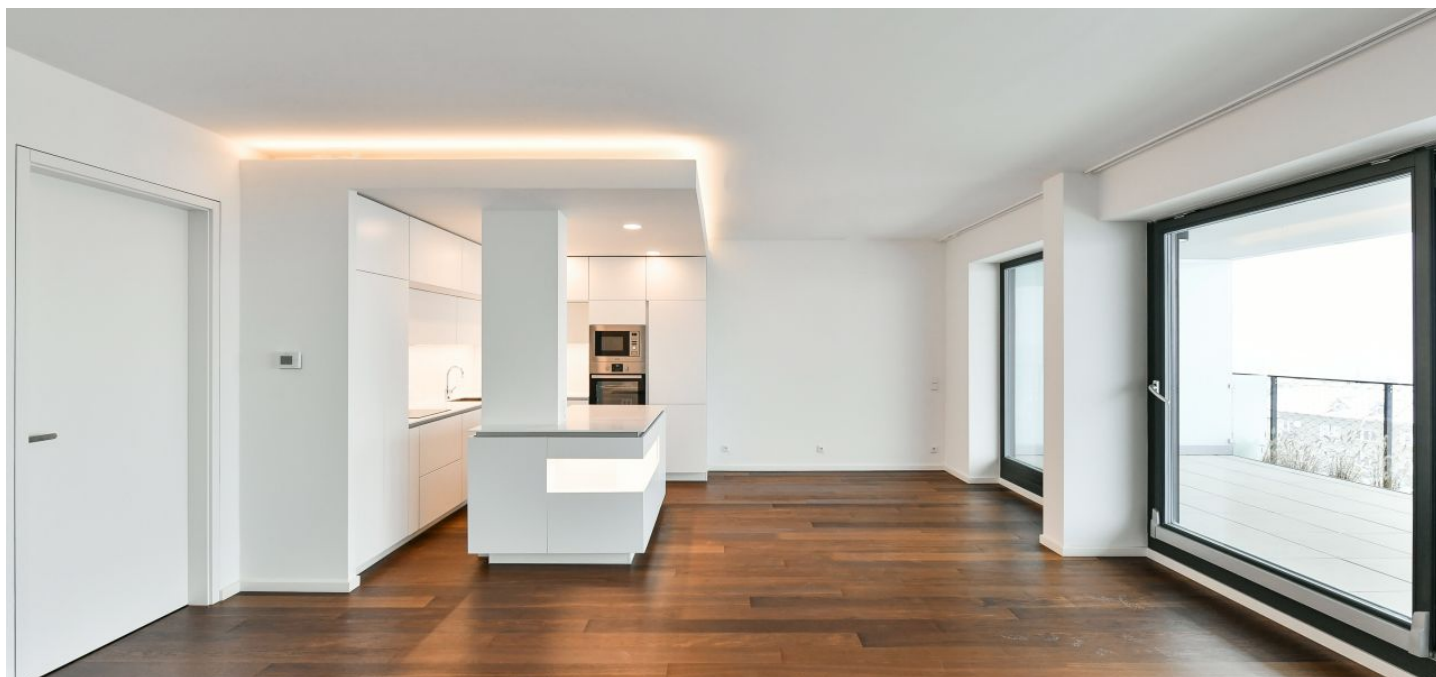


## Apartment Three-bedroom (4+kk)

Rented

118 m<sup>2</sup>, Prague 5, Košíře, Na Pomezí



## Apartment Three-bedroom (4+kk)

Rented

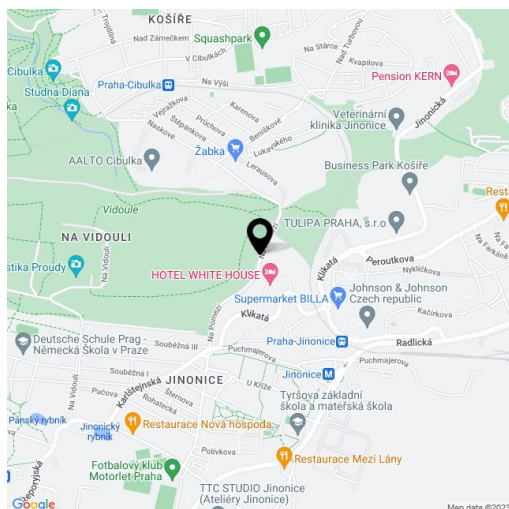
118 m<sup>2</sup>, Prague 5, Košíře, Na Pomezí

Total area	143 m <sup>2</sup>
Floor area*	118 m <sup>2</sup>
Terrace	25 m <sup>2</sup>
Parking	Double garage.
Garage	Yes
Cellar	Yes
PENB	B
Reference number	38476
Available from	Immediately

Modern apartment in the brand new, highly praised SAKURA project. Boasting wonderful views of the city and surrounding greenery, this high standard 3-bedroom 2-bathroom apartment with 2 terraces is on the second floor of a residential project with security, a unique shared garden and lush greenery. Set in a quiet residential neighborhood on the edge of the Cibulka forest park, close to Vidoule natural preserve. Conveniently located for the Jinonice metro station, Nový Smíchov / Anděl commercial center and the German School, with full amenities in close vicinity.

The interior features a living room with a dining area, a fully fitted open plan kitchen and access to a 20 m<sup>2</sup> terrace, 3 bedrooms with access to a 5 m<sup>2</sup> terrace, an en-suite bathroom (walk-in shower, toilet), a family bathroom (bathtub, walk-in shower), a separate toilet, a utility room, and an entrance hall.

Hardwood floors, tiles, underfloor heating throughout, built-in wardrobes and storage in all bedrooms and the hall, floor-to-ceiling French windows, central heating, washing machine, dishwasher, induction cooktop, microwave oven, cellar, lift. A secure underground double garage is included. Monthly deposit for service charges, heating and water: CZK 6000. Electricity is billed separately (transfer to the tenant).



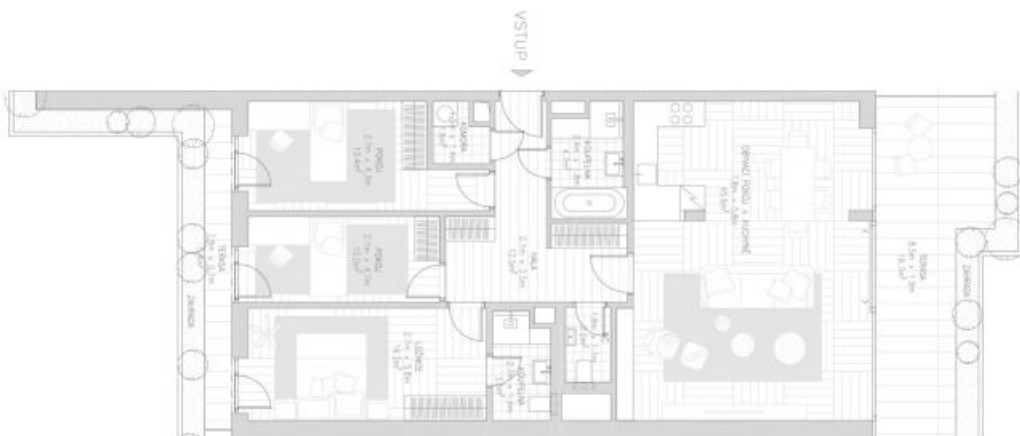
\* Area of the unit according to the Civil Code. The area consists of the sum total area of the entire unit bounded by perimeter walls.

# Apartment Three-bedroom (4+kk)

Rented

118 m<sup>2</sup>, Prague 5, Košíře, Na Pomezí

PREMIUM  
DEVELOPMENT



### LEGENDA MÍSTNOSTÍ

OBÝVAČÍ POKOJ + KUCHYŇKĚ	45,6 m <sup>2</sup>
KOUPELNA	4,7 m <sup>2</sup>
KOUPELNA	3,5 m <sup>2</sup>
HAL A	12,5 m <sup>2</sup>
KOMNORA	1,8 m <sup>2</sup>
VÍC	2,0 m <sup>2</sup>
POKOJ	13,4 m <sup>2</sup>
POKOJ	10,0 m <sup>2</sup>
LOŽNICE	16,2 m <sup>2</sup>
ČISTÁ PODLAHOVÁ PLOCHA	109,7 m <sup>2</sup>

### VENKOVNÍ PLOCHA

TERASA	19,7 m <sup>2</sup>
TERASA	5,4 m <sup>2</sup>

### CELKOVÁ PLOCHA K ZASTAVĚNÍ

118,0 m<sup>2</sup>

### PŮDORYS / ŘEZ



Datum: 02/2017  
Měřítko: 1:100  
Formát výkresu: A3

1 Každý soubor pozemní informace a sádkový výkres jsou přílohou. Přesná rozložení a velikosti se mohou lišit. Developer si vyhrazuje právo na změny a úpravy bez předchozího upozornění.