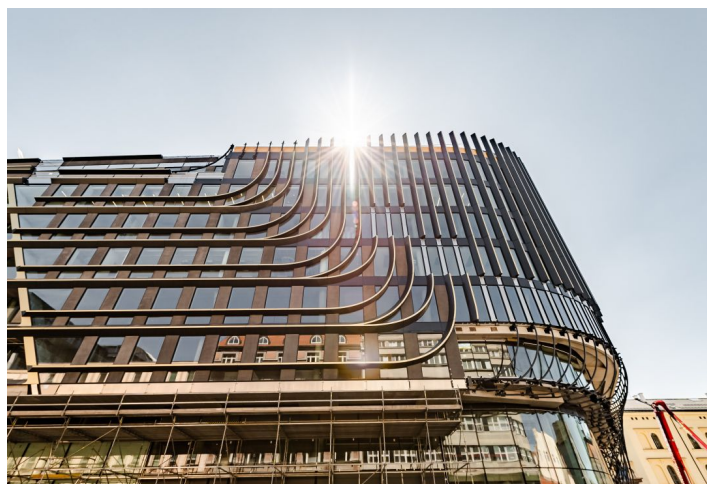
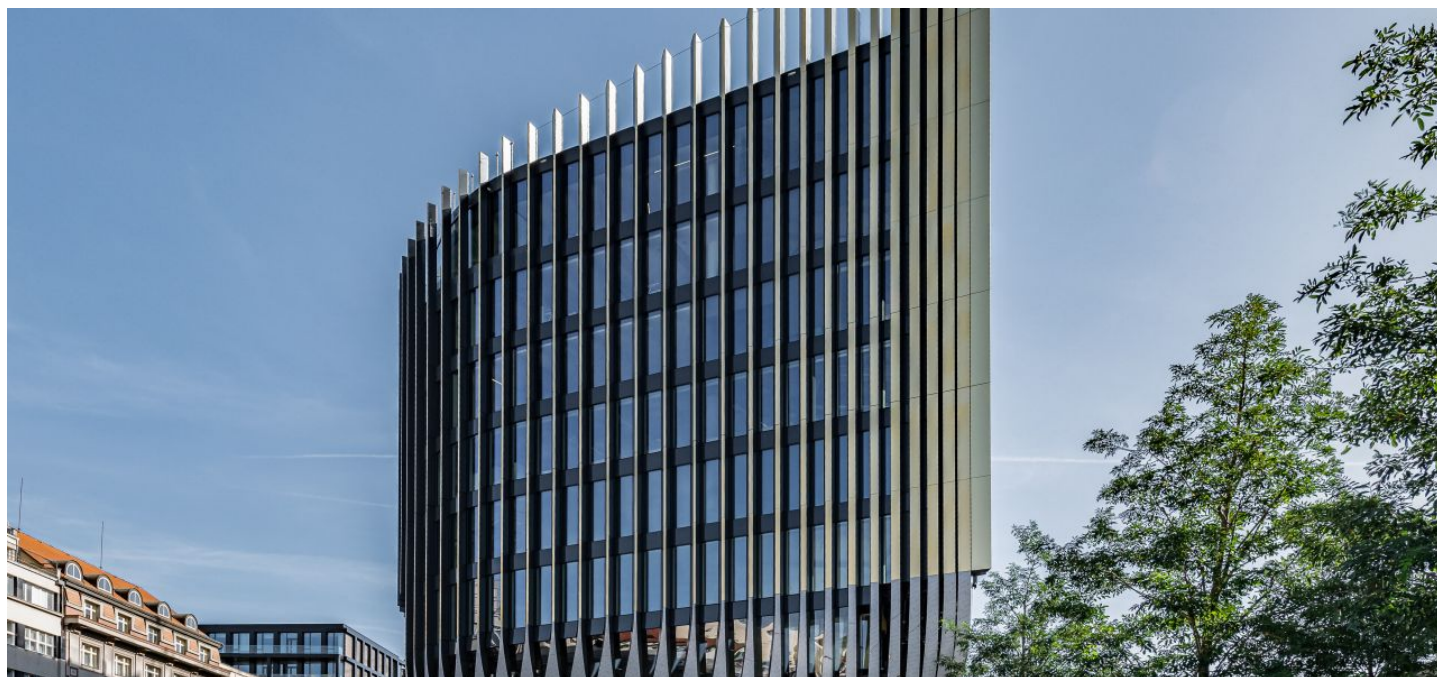


## Office space

Rented

Prague 1, Nové Město, Havlíčkova



## Office space

Rented

Prague 1, Nové Město, Havlíčkova

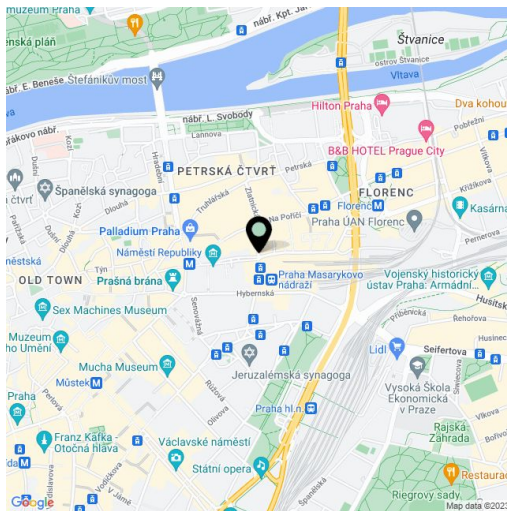
|                         |                                    |
|-------------------------|------------------------------------|
| <b>Service price</b>    | 130 CZK monthly per m <sup>2</sup> |
| <b>Available area</b>   | 66 m <sup>2</sup>                  |
| <b>Cellar</b>           | -                                  |
| <b>Parking</b>          | EUR 200 / pp / month               |
| <b>PENB</b>             | G                                  |
| <b>Reference number</b> | 38197                              |

Office space for lease on the 1st floor in a project designed by Zaha Hadid Architects. The studio's intention was to respect the history of the area and thus to create a unique architectural work that will become part of the modern appearance of the city of Prague. The project meets the strictest criteria of LEED certification.

**Location:**

The project is located directly at the Masaryk Railway Station, the Náměstí Republiky tram stop, and the Náměstí Republiky metro station (line B).

Rental and service charges listed without VAT. Lessee pays no commission.



# Office space

Rented

Prague 1, Nové Město, Havlíčkova

