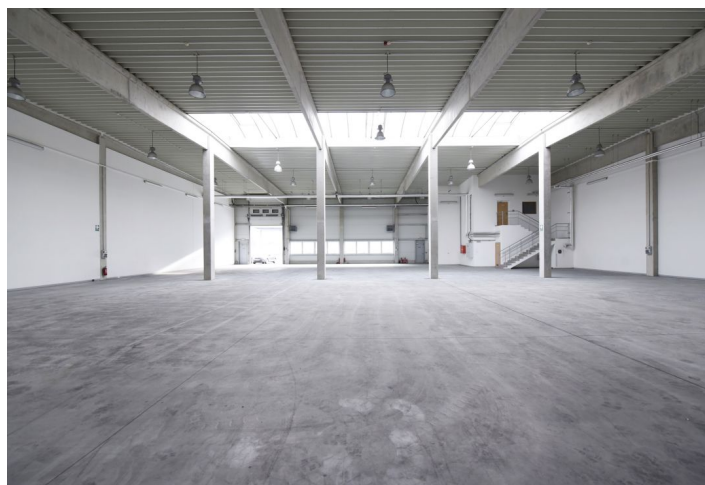


Warehouse space

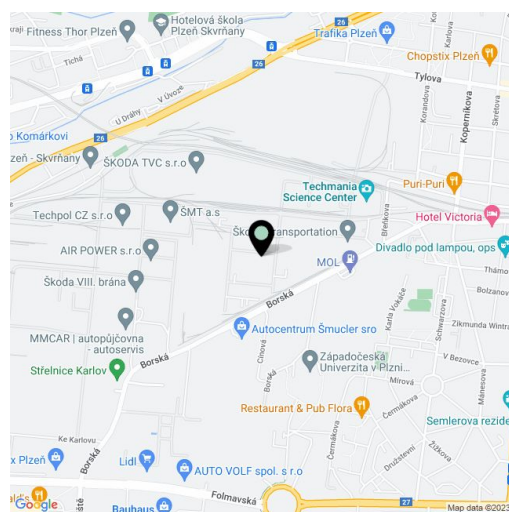
Ask for price

997 m², Plzeň-město, Plzeň, Borská



997 m², Plzeň-město, Plzeň, Borská

Total area	997 m ²
Ceiling height	7 m
Floor loading capacity	5 t/m ²
Column grid structure	—
Structure	Reinforced concrete structure
PENB	G
Reference number	38091



884 sq.m. of warehouse and **113 sq.m.** of office space for rent. The hall is divided into 8 separate parts, each with its own two-storey social and administrative building, where the offices, cloakrooms, social and technical facilities of the building are located. Modern spaces of category A. The premises are suitable for storage, logistics or light production, they can be adapted according to the client's requirements.

Location:

The hall is located on the western edge of Pilsen in the established Škoda Plzeň complex. Year of construction 2008. It is accessible to the external communication network of the city of Pilsen and the D5 motorway. The entrance to the hall is from the south side, where there is an access road and a handling area. Easy transport by car, bus or train (Plzeň Skvrňany stop at the park area).

Features and Services:

- Flexible units (warehouse / office / light production / showroom)
- Property management directly on the premises
- Secure entrance to the complex (24/7)
- Electronic security alarm
- Technical room with HV / LV substation
- Exchanger station connected to an external hot water supply
- Space for trucks to enter the hall
- Parking places

Industrial/Warehouse space:

- Drive-in doors
- Floor loading capacity 5 t/sq.m.
- Clear height 7 m
- Column grid 12 m x 24 m
- Fluorescent and discharge lamps
- Daylight lighting of the hall is provided by skylights and the lower window strip
- Natural ventilation of the hall is performed by lower windows and skylights
- Gas hot air units

Office:

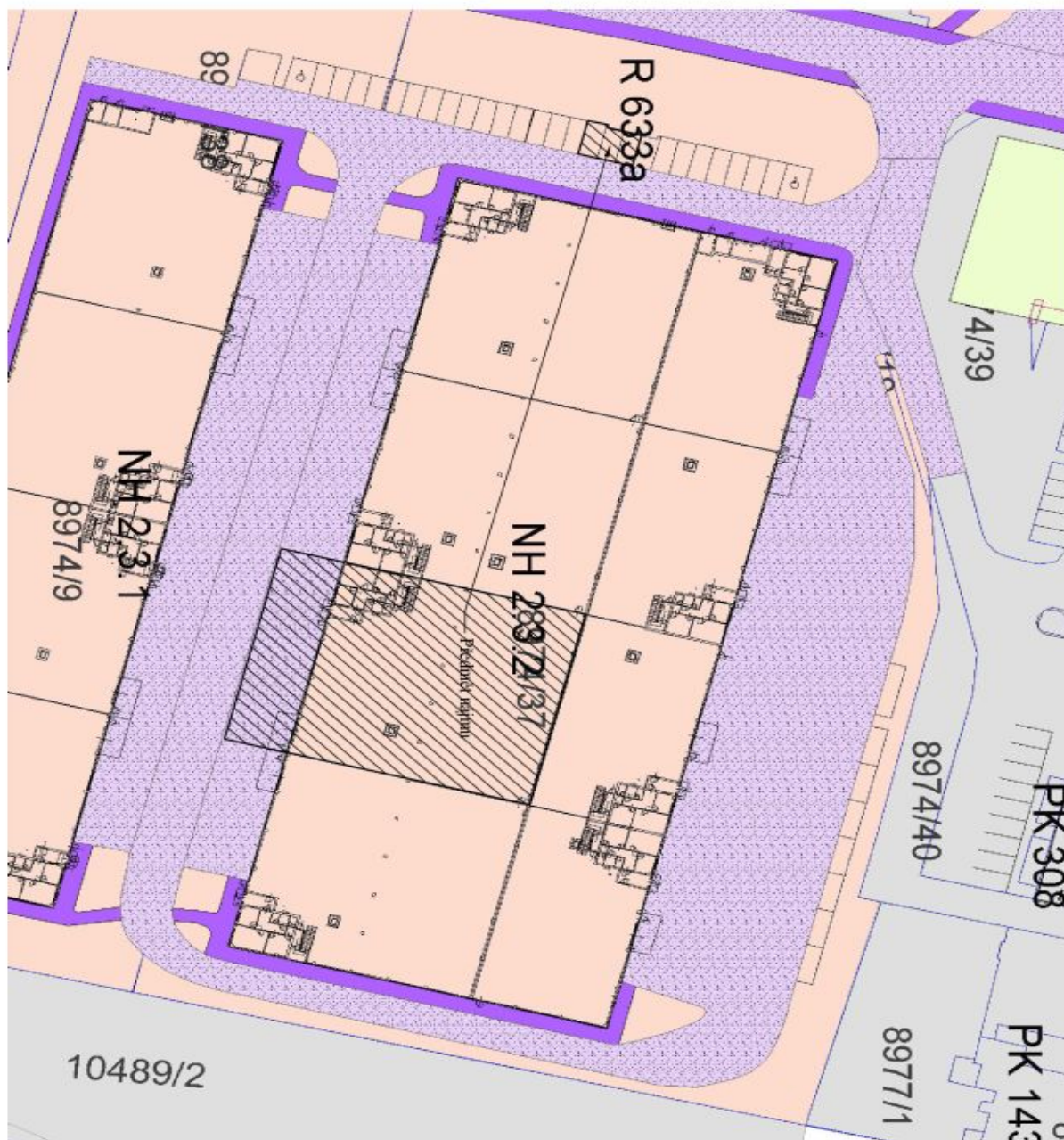
- air conditioning is installed in the changing rooms and washrooms
- in offices it is ventilated naturally by windows
- heating with plate radiators

Available from mid-April, 2021.

Warehouse space

Ask for price

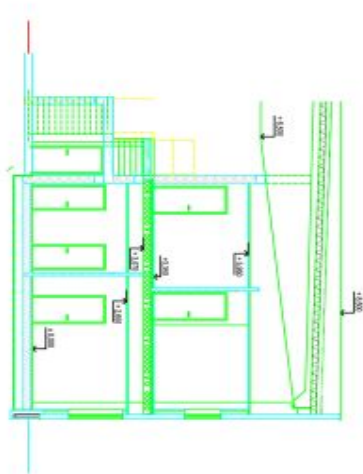
997 m², Plzeň-město, Plzeň, Borská



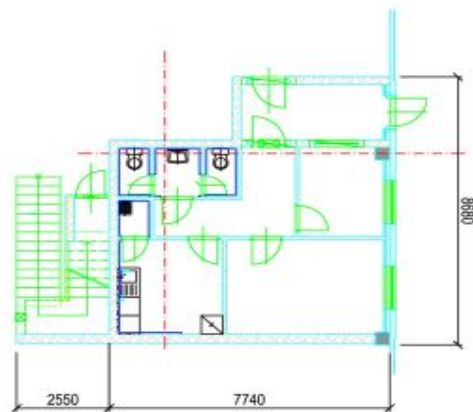
Warehouse space

997 m², Plzeň-město, Plzeň, Borská

Ask for price



ŘEZ - CUT



PŮDORÝS 1.NP - 1. OVERGROUND FLOOR

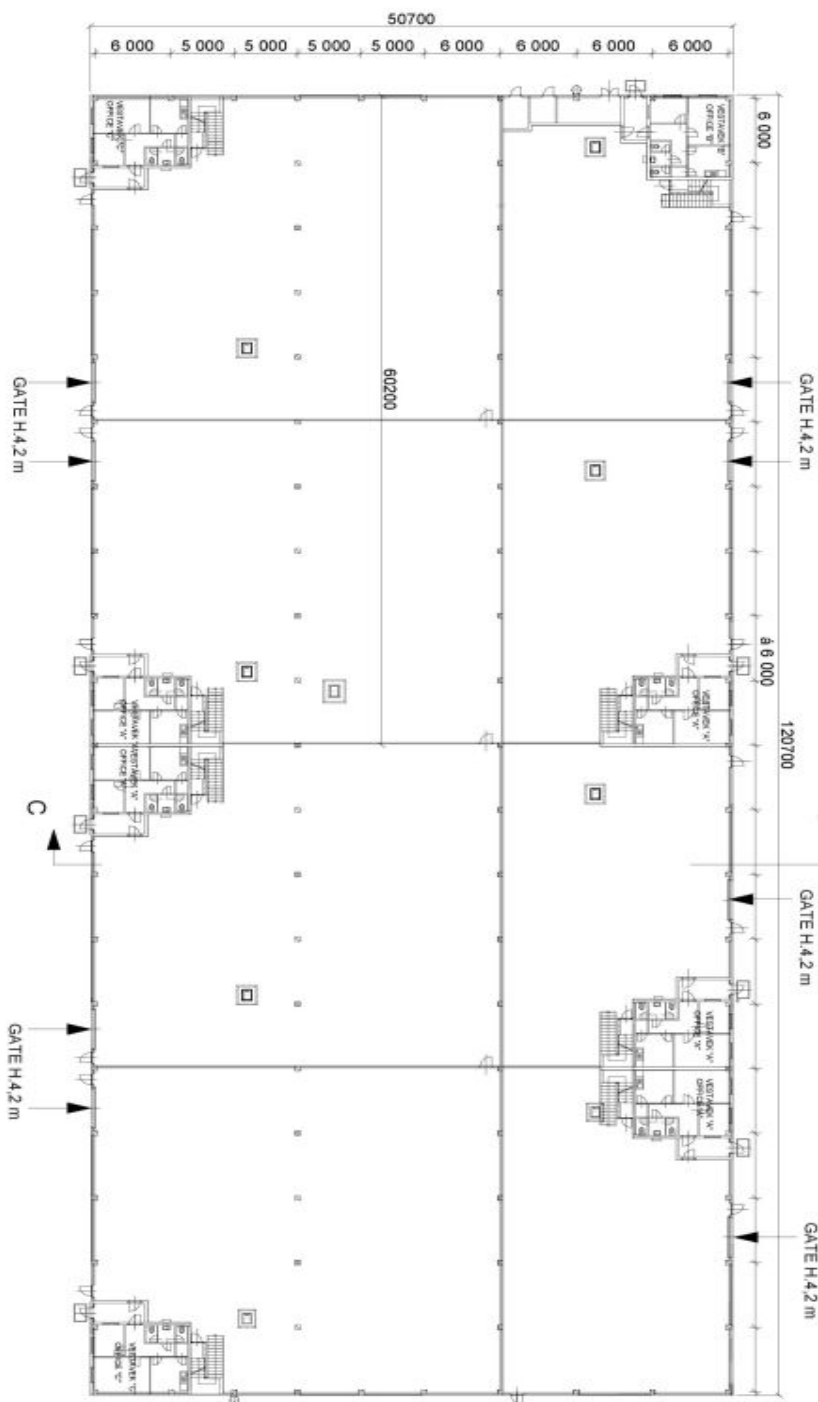


PŮDORÝS 2.NP - 2. OVERGROUND FLOOR

VESTAVĚK A NH 2.3.2 - OFFICE RENTAL HALL 2.3.2

997 m², Plzeň-město, Plzeň, Borská

HALA 2.3.2 - RENTAL HALL 2.3.2



ŘEZ C-C - CUT C-C

