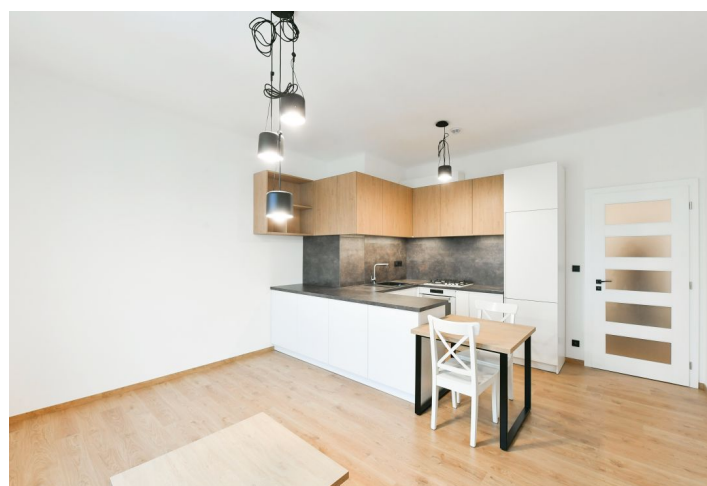


Apartment One-bedroom (2+kk)

€ 912 | CZK 22 800

53 m², Prague 4, Nusle, U Křížku



Apartment One-bedroom (2+kk)

€ 912 | CZK 22 800

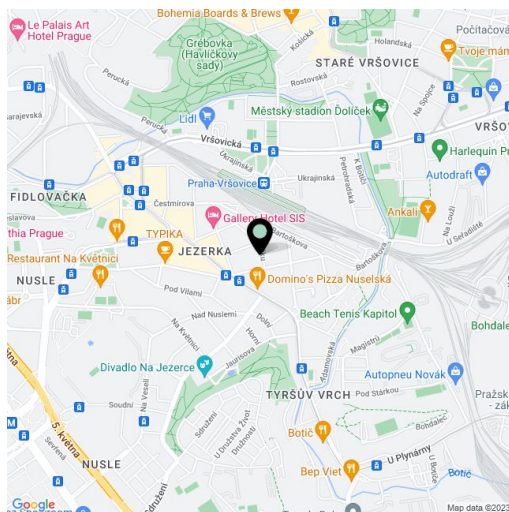
53 m², Prague 4, Nusle, U Křížku

Total area	53 m ²
Parking	-
Cellar	Yes
Service price	Monthly deposit for services, heating, and water CZK 3,130. Gas and electricity - transferred to the tenant.
PENB	G
Reference number	38032
Available from	Immediately

This fully newly refurbished, unfurnished apartment with far-reaching views, on the 5th floor of a well-maintained traditional residential building with an elevator is located on a quiet street in Nusle, Prague 4, just a few min. walk from Bratří Synků Square with tram stops and quick access to the city center. Full amenities are available within easy reach, as well as the Jiráskovy Sady and Na Fidlovačce parks.

The apartment includes a living room with a fully fitted open plan kitchen, a bedroom with built-in wardrobes, a shower bathroom with a toilet, a closet, and an entrance hall.

Laminate floors, tiles, security entry door, blinds, central heating, dishwasher, alarm, UPC cable connection, **cellar**, balcony on the mezzanine floor of the building.



* Area of the unit according to the Civil Code. The area consists of the sum total area of the entire unit bounded by perimeter walls.