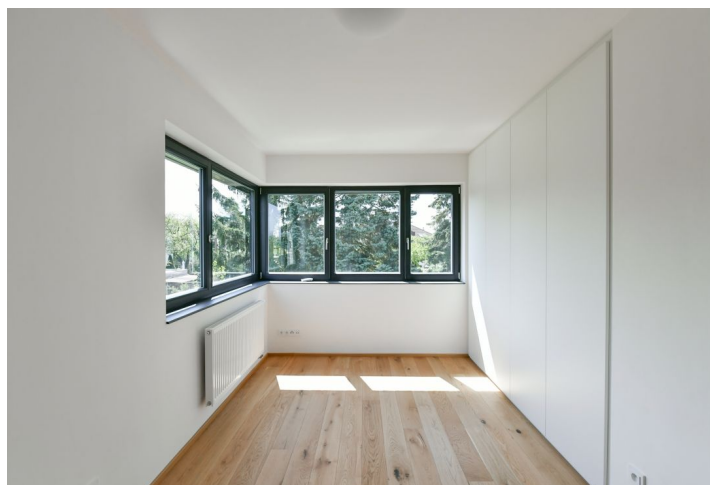


House Three-bedroom (4+kk)

Rented

145 m², Prague 4, Kunratice



House Three-bedroom (4+kk)

Rented

145 m², Prague 4, Kunratice

Plot	301 m ²
Foot print	92 m ²
Garden	209 m ²
Parking	Garage and 2 parking spaces on the plot.
Garage	Yes
Cellar	-
Service price	Deposit for services and utilities CZK 17,000/month.
PENB	B
Reference number	37471
Available from	Immediately

Benefiting from close proximity to popular Kunratický Forest, this townhouse with 2 bathrooms, a back garden, and parking is situated in a quiet residential neighborhood with plenty of greenery, near a local school, a kindergarten, and several sports facilities incl. a popular bike path leading to the Vltava River in Podolí, in close proximity to the Castle Park and Kunratice shopping center. A location with quality amenities and good access to the city center, the Chodov metro station and shopping mall, and convenient to the D1 highway and Prague 4 international schools (PBS, Czech-British Elementary School).

The ground floor features a living room with a fully fitted open plan kitchen and access to the **terrace** and **garden**, a storage room, a toilet, a utility room, garage access, and an entrance hall. The upper floor includes a master bedroom with a large **walk-in closet** and an en-suite bathroom (walk-in shower, toilet, bidet shower), two further bedrooms, and a family bathroom (bathtub with a shower screen, bidet, toilet).

Air-conditioning in the bedrooms, **hardwood floors**, carpets in the children's rooms, large-format tiles, wooden stairs, built-in wardrobes, electric boiler, washer, dryer, dishwasher, TV, terrace awning. A **garage** and **two parking spots** on the plot are available.

House Three-bedroom (4+kk)

145 m², Prague 4, Kunratice

Rented



DŮM C

Užitná plocha
Podlahová plocha

Oké nábere v úhlu c. 180°/210° st.

145,2 m²
147,0 m²

Zastavěná plocha
Plocha pozemku

92,1 m²
301,2 m²

Legenda místností 1.NP

č.	název místnosti	plocha m ²	podlahová krytina
3.1.01	zobovříti	7,57	keramická dlažba
3.1.02	garáž	17,14	oběma
3.1.03	ob	2,52	keramická dlažba
3.1.04	schodiště	9,05	dřevěná ohruvňová
3.1.05	wc	2,00	keramická dlažba
3.1.06	korona	2,34	keramická dlažba
3.1.07	obytvací pokoj + jídelna + kú	33,17	dřevěná ohruvňová
		73,79 m ²	

Legenda místností 2.NP

č.	název místnosti	plocha m ²	podlahová krytina
3.2.01	ložnice	13,41	dřevěná ohruvňová
3.2.02	ložnice	6,12	dřevěná ohruvňová
3.2.03	ložnice	5,28	keramická dlažba
3.2.04	obytvací	11,19	dřevěná ohruvňová
3.2.05	ložnice	7,15	keramická dlažba
3.2.06	podkój	13,65	dřevěná ohruvňová
3.2.07	podkój	14,61	dřevěná ohruvňová
		71,41 m ²	

rodinný dům Terzetto Kunratice_DŮM C_Pudový