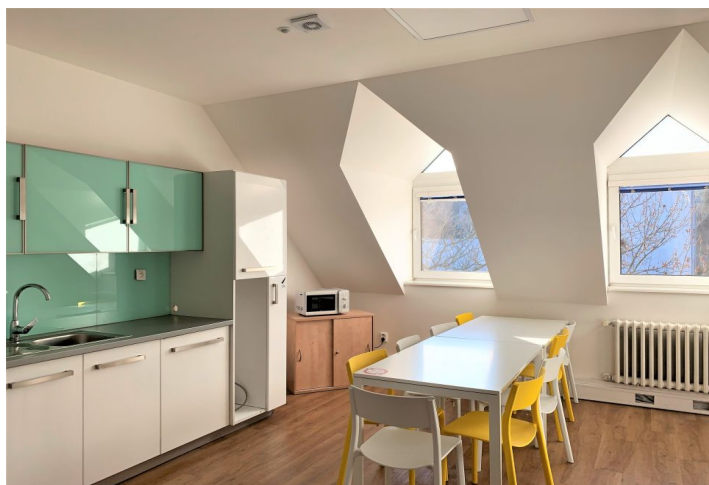
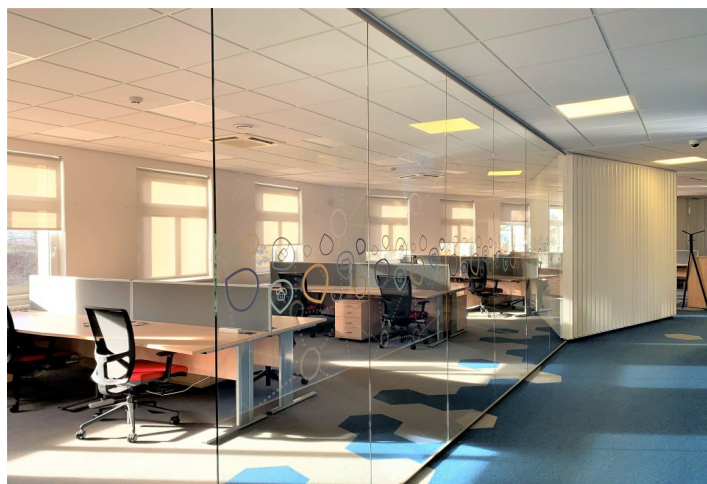
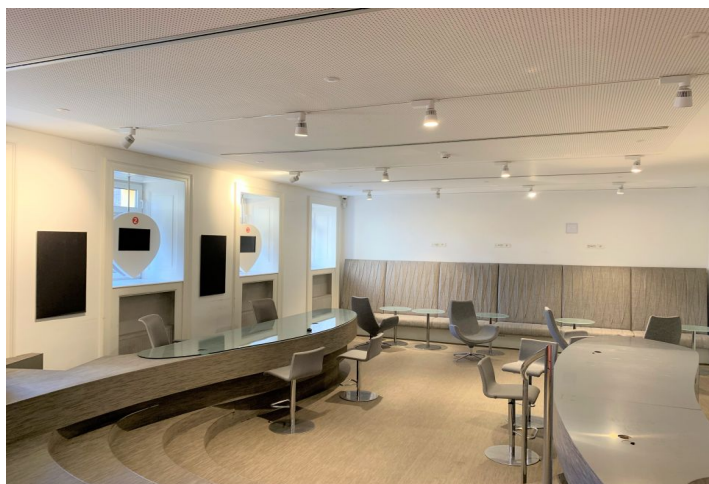


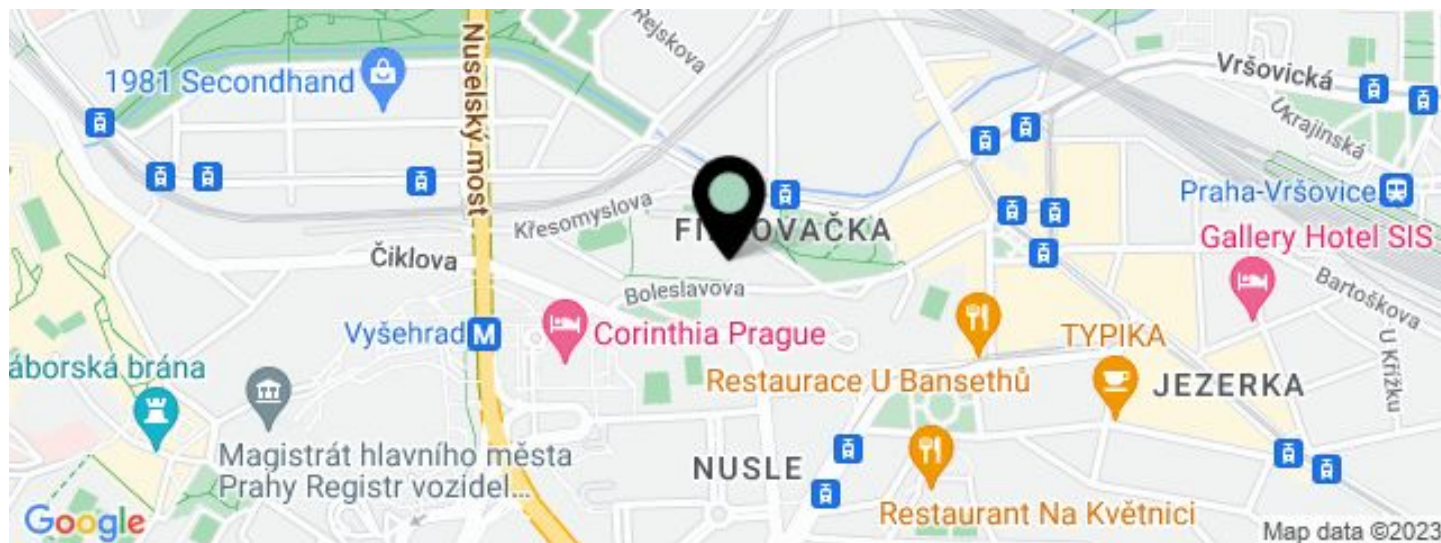
Office building

€ 10.01 - 11.62 / m² | CZK 250 - 290 / m²

526 m², Prague 4, Nusle, Závěšova



Office building

€ 10.01 - 11.62 / m² | CZK 250 - 290 / m²526 m², Prague 4, Nusle, Závěšova

UNIT	AVAILABLE AREA	SERVICES	PARKING	MONTHLY RENT
Office space, 1st floor	526 m ²	183 CZK monthly per m ²	CZK 1352 / pp / month	€ 10.01 - 11.62 / m ²

Office building

€ 10.01 - 11.62 / m² | CZK 250 - 290 / m²

526 m², Prague 4, Nusle, Závěšova

Service price	183 CZK monthly per m ²
Total building area	3 127 m ²
Tenant consumption	—
Parking	1 352 CZK
Parking service charges	—
Parking ratio	1:52
Certification	—
PENB	G
Reference number	37409

The complex of office buildings offers office space for lease. It consists of 3 interconnected buildings and one detached. Offices can be used as open space or individual offices. Outdoor parking is also available.

Location:

The building is located a few minutes from the tram stop Divadlo Na Fidlovačce and 10 minutes walk from the metro station Vyšehrad (line C), which takes you to the city center within 4 minutes.

Features and Services:

Cooling
Computer/Network cabling
Power cabling
Smoke detectors
Fibre optics
Openable windows
Heating
Mechanical ventilation

Rental and service charges listed without VAT. Lessee pays no commission.

