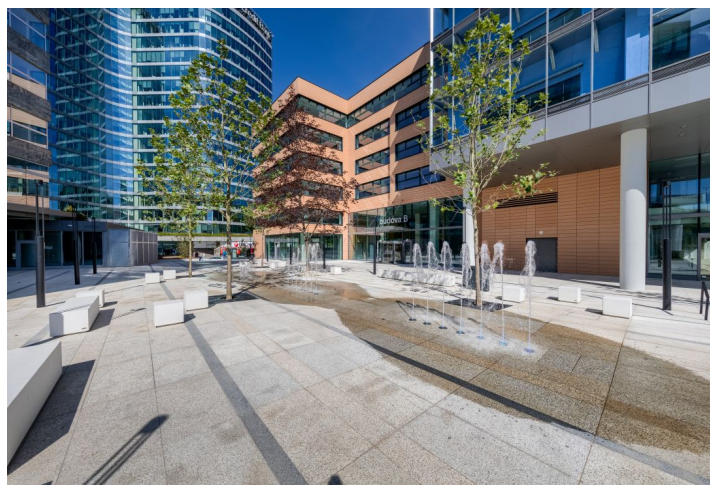
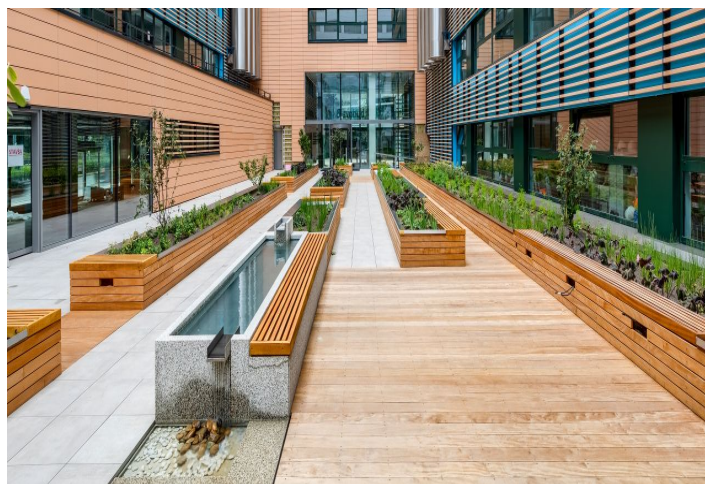
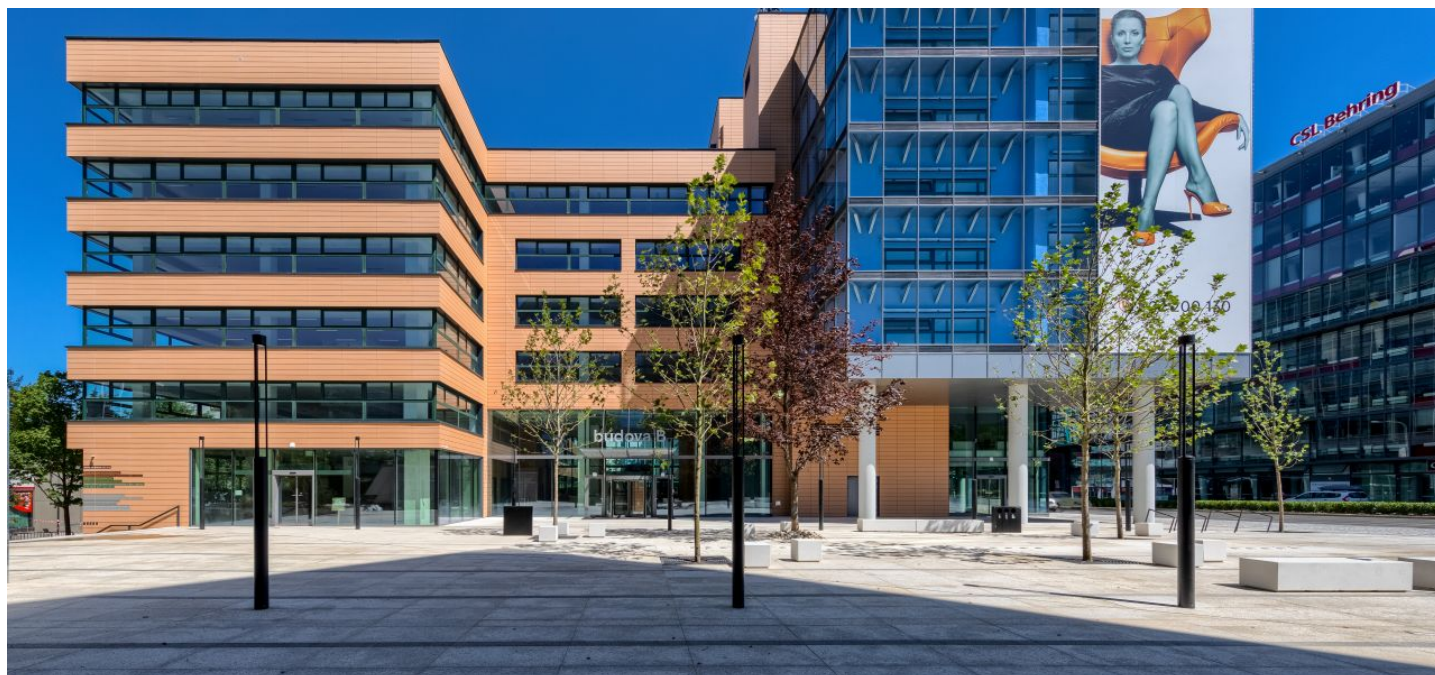


Office space

€ 19.50 / m² | CZK 488 / m²

Prague 4, Michle, Vyskočilova



Office space

€ 19.50 / m² | CZK 488 / m²

Prague 4, Michle, Vyskočilova

Service price	182 CZK monthly per m ²
Available area	1 255 m ²
Cellar	-
Parking	Yes
PENB	E
Reference number	37234

Administrative building, which has undergone complete reconstruction, offers office space for lease on the 2nd floor. The building, designed by Aulík Fišer architects, has 8 above-ground and 3 underground floors and is located in the business district of Prague 4. An interesting feature of the building is the double glazed facade on the south side.

Location:

Very good transport accessibility – easy connection to the Prague Ring Road and the D1 highway leading to Brno. Excellent public transportation availability – the Budějovická metro station (line C) is a 2-min. bus ride or approx. 6-min. walk. A shuttle bus connects the building with the Pankrác and Budějovická metro stations (line C).

Features and Services:

- 24/7 reception and security
- Cafeteria on the ground floor
- Air conditioning
- Openable windows with external sunblinds

Prices are listed without VAT. Lessee pays no commission.

