

## Apartment Studio (1+kk)

Rented

44 m<sup>2</sup>, Prague 8, Libeň, U Vlachovky



## Apartment Studio (1+kk)

Rented

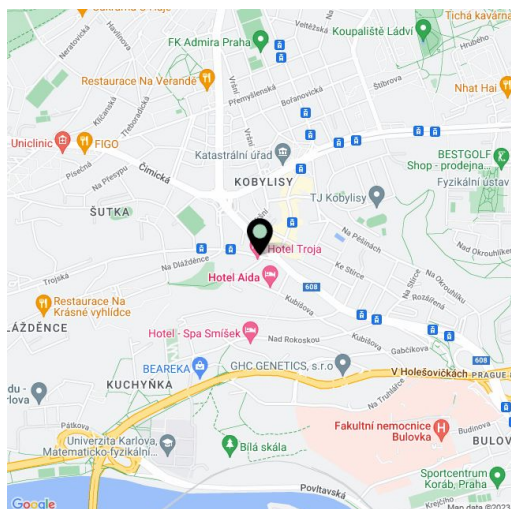
44 m<sup>2</sup>, Prague 8, Libeň, U Vlachovky

Total area	54 m <sup>2</sup>
Floor area*	44 m <sup>2</sup>
Terrace	10 m <sup>2</sup>
Parking	Parking is available.
Garage	Yes
Cellar	-
PENB	G
Reference number	37182
Available from	Immediately

Benefiting from a 10 m<sup>2</sup> terrace and garden views, this brand new studio apartment is situated on the second floor of a newly built residence with a lift and on-site parking. Set on the edge of a quiet residential neighborhood in Libeň, just a 5 min. walk from Kobylisy metro station (11 min. to the city center), with multiple tram and bus links. The location offers full amenities within easy reach including the Stírka outdoor swimming pool, the popular Šutka Water Park, the Havránka natural reserve, Čimický and Ďáblický háj forests, Velká Skála Rocks, the Prague ZOO and Botanical Garden and more.

The interior features a living room / bedroom with a fully fitted open plan kitchen and terrace access, a shower room with a toilet, and an entrance hall.

Vinyl floors, tiles, security entry door, oversized windows, central heating, dishwasher, induction cooktop, video entry phone. A garage parking space or an outdoor space is available at CZK 2,000 / 1,500 per month. Service charges and utilities are billed separately.



\* Area of the unit according to the Civil Code. The area consists of the sum total area of the entire unit bounded by perimeter walls.

## Apartment Studio (1+kk)

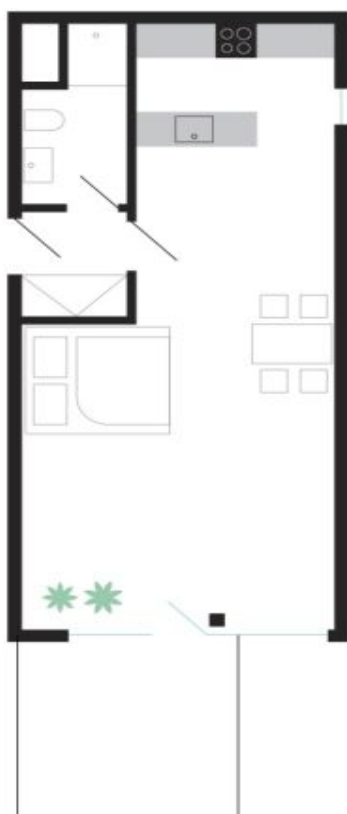
44 m<sup>2</sup>, Prague 8, Libeň, U Vlachovky

Rented

# Byt 3B22

Označení bytu	3B22
Plocha	44.0 m <sup>2</sup>
Patro	3

Obytná místnost	37.7 m <sup>2</sup>
Koupelna s WC	3.3 m <sup>2</sup>
Předsíň	3.0 m <sup>2</sup>
Terasa	10.1 m <sup>2</sup>



**Vila Vlachovka**  
Bydlete nad Prahou.