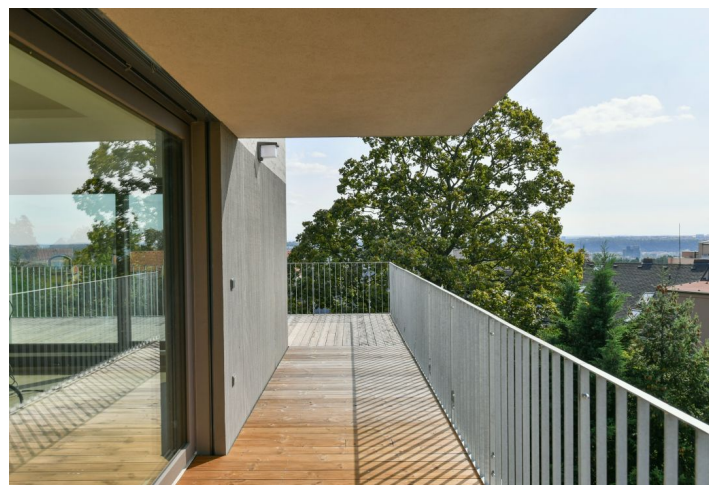


Apartment Two-bedroom (3+kk)

Rented

73 m², Prague 8, Libeň, U Vlachovky



Apartment Two-bedroom (3+kk)

Rented

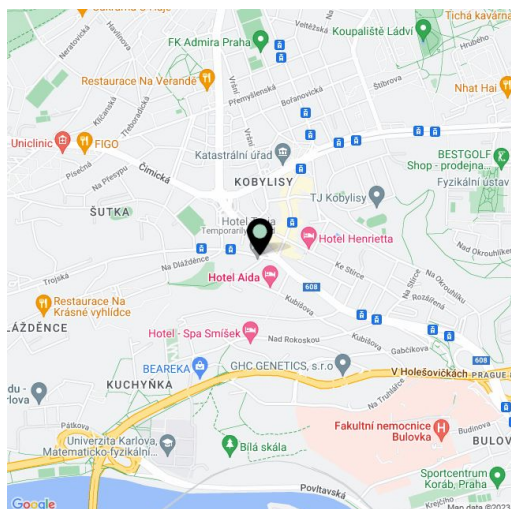
73 m², Prague 8, Libeň, U Vlachovky

Total area	116 m ²
Floor area*	73 m ²
Terrace	43 m ²
Parking	Parking is available.
Garage	Yes
Cellar	Yes
PENB	G
Reference number	37180
Available from	Immediately

Boasting a 43 m² terrace offering views of the city and the surrounding greenery, this brand new 2-bedroom apartment is situated on the second floor of a newly built residence with a lift and on-site parking. Set on the edge of a quiet residential neighborhood in Libeň, just a 5 min. walk from Kobylisy metro station (11 min. to the city center), with multiple tram and bus links. The location offers full amenities within easy reach including the Stírka outdoor swimming pool, the popular Šutka Water Park, the Havránka natural reserve, Čimický and Ďáblický háj forests, Velká Skála Rocks, the Prague ZOO and Botanical Garden and more.

The interior features a living room with a fully fitted open plan kitchen, 2 bedrooms, a bathroom with a bathtub, a separate toilet, and a spacious entrance hall. The **terrace** is accessible from all main rooms.

Vinyl floors, tiles, security entry door, oversized windows, central heating, dishwasher, induction cooktop, video entry phone, **cellar**. A garage **parking** space or an outdoor space is available at CZK 2,000 / 1,500 per month. Service charges and utilities are billed separately. Available from November 2020.



* Area of the unit according to the Civil Code. The area consists of the sum total area of the entire unit bounded by perimeter walls.

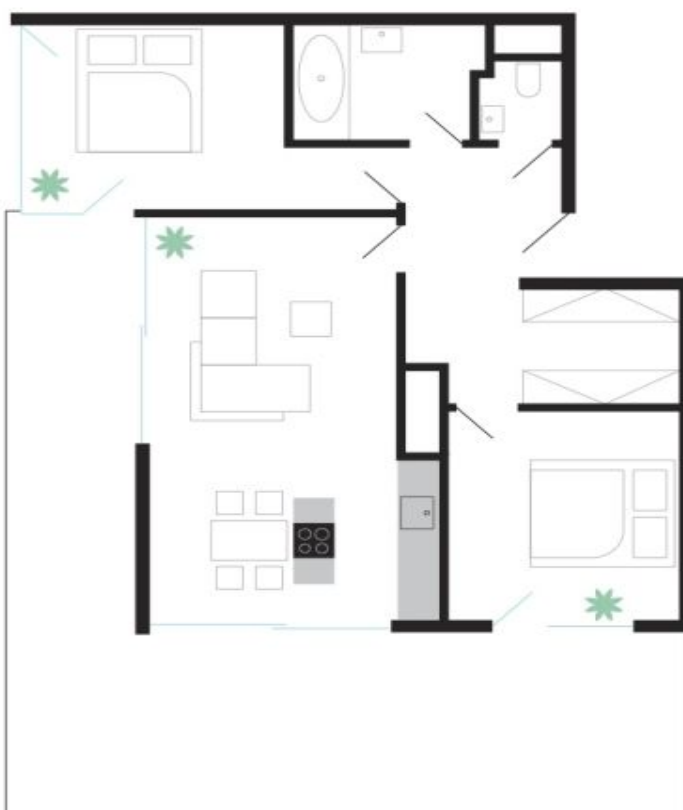
Apartment Two-bedroom (3+kk)

Rented

73 m², Prague 8, Libeň, U Vlachovky

Byt 3B15

Označení bytu	3B15
Plocha	73,3 m ²
Patro	3
Obytná místnost	27,3 m ²
Ložnice	12,3 m ²
Ložnice	13,9 m ²
Koupelna	4,9 m ²
WC	1,3 m ²
Předstín s šatnou	13,6 m ²
Terasa	43,4 m ²

Vila Vlachovka
Bydlete nad Prahou.