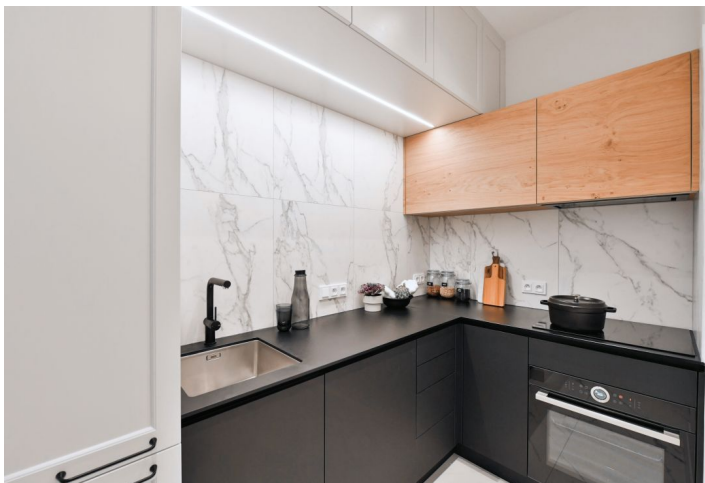


Apartment One-bedroom (2+kk)

Rented

44 m², Prague 2, Nusle



Apartment One-bedroom (2+kk)

Rented44 m², Prague 2, Nusle

Total area	44 m ²
Parking	-
Cellar	-
PENB	G
Reference number	37038
Available from	Immediately

* Area of the unit according to the Civil Code. The area consists of the sum total area of the entire unit bounded by perimeter walls.

This high quality, fully furnished 1-bedroom apartment has been completely newly refurbished to provide the comforts of a modern lifestyle. Situated on the first floor of a newly fully renovated apartment building with no lift, in an attractive part of Nusle in close vicinity of the Vyšehrad Castle, Lumírový sady and Folimanka Park. The location offers rich amenities including cafes, restaurants, delicatessen and fresh produce shops, plus very quick access to the city center, with a tram stop just steps from the building. Within easy reach is the Na Fidlovačce Theater and the Jezerka Park with the Na Jezerce Theater.

The interior features a spacious living room with a fully fitted open plan kitchen, a bedroom with built-in wardrobes, a bathroom including a walk-in shower, a sink and a toilet, and an entrance hall.

Quality equipment and finishes, built-in storage, **solid wood parquet floors**, tiles, central heating, washing machine, video entry phone. Monthly deposit for service charges, water and heating: CZK 2300 for one person. Electricity is billed separately.