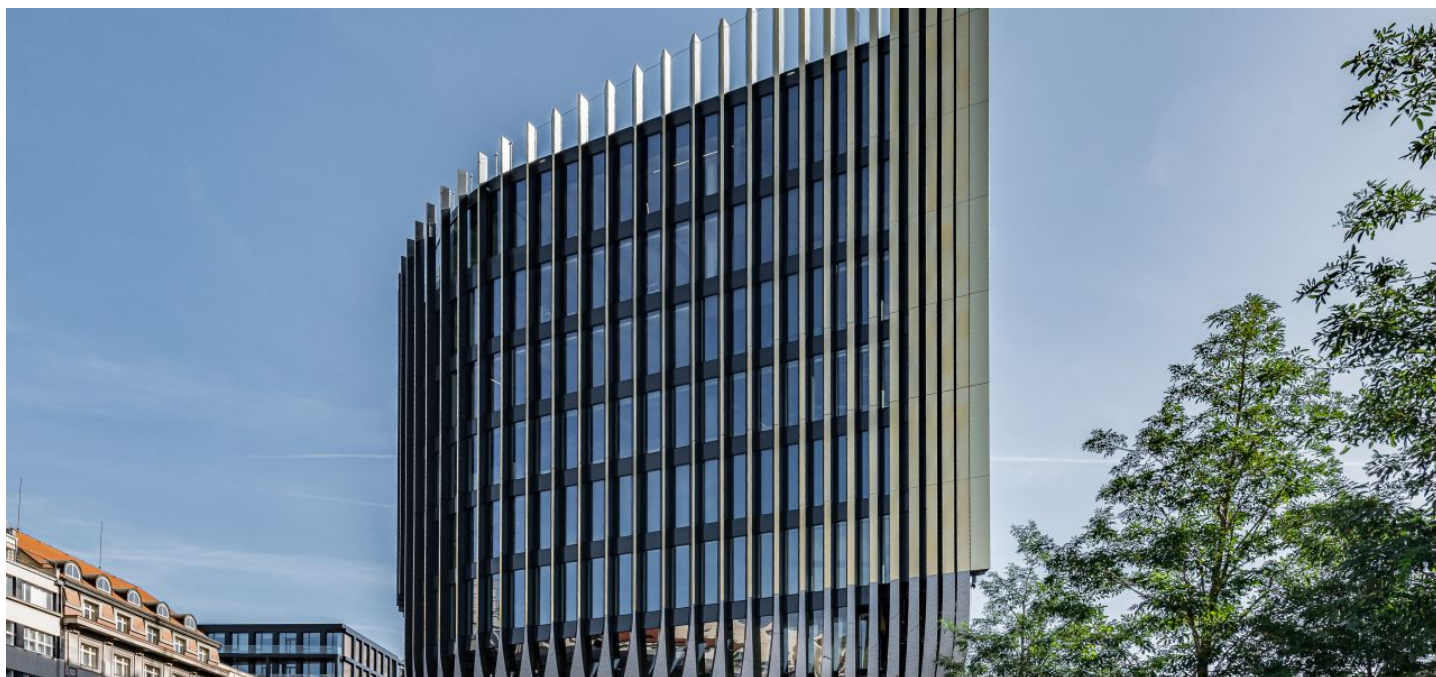


Office building

Rented

Prague 1, Nové Město, Havlíčkova



Office building

Rented

Prague 1, Nové Město, Havlíčkova

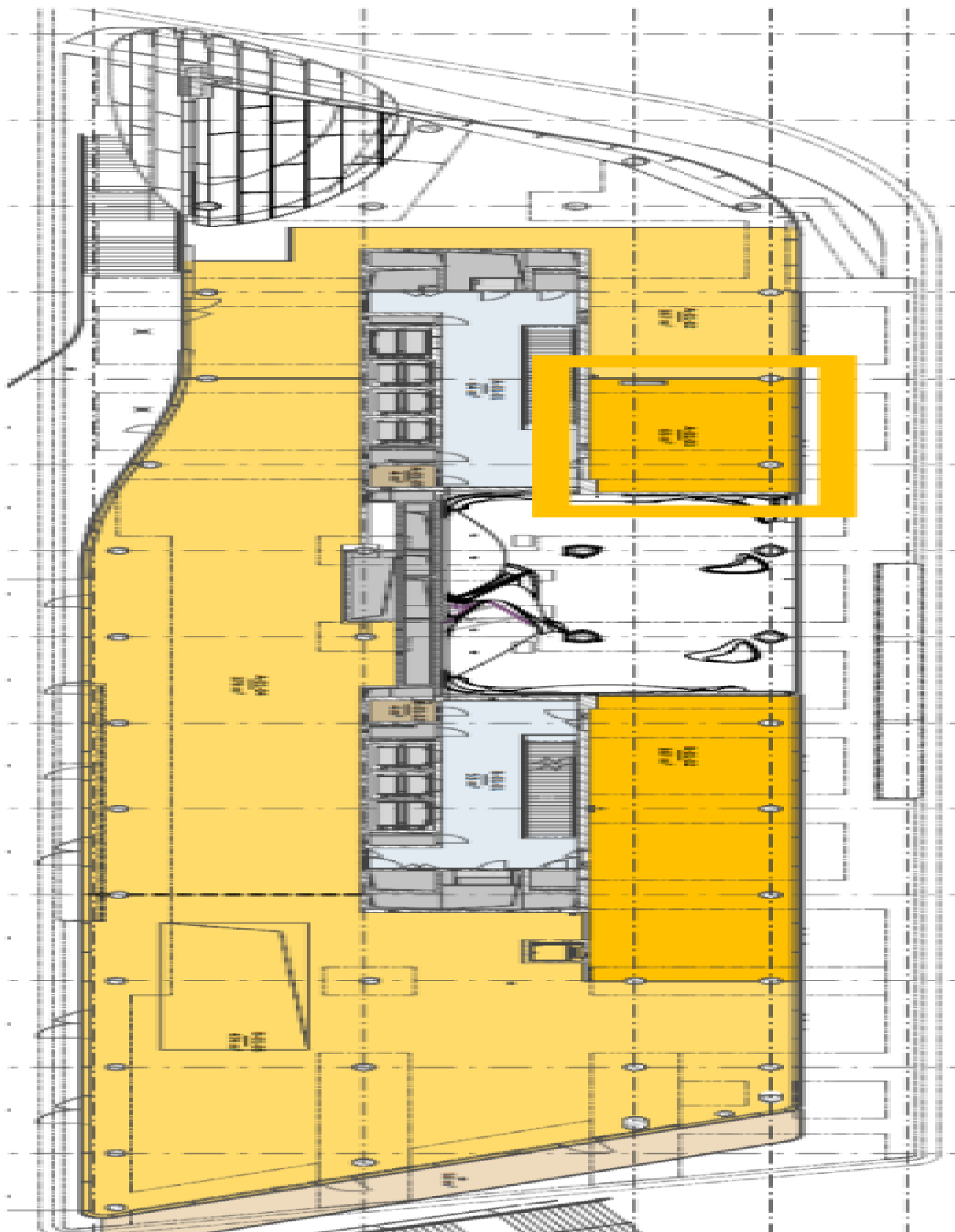
Service price	130 CZK monthly per m ²
Total building area	100 000 m ²
Tenant consumption	—
Parking	-
Parking service charges	—
Parking ratio	—
Certification	—
PENB	G
Reference number	36712

Office space for lease in a project designed by Zaha Hadid Architects. The studio's intention was to respect the history of the area and thus to create a unique architectural work that will become part of the modern appearance of the city of Prague. The project meets the strictest criteria of LEED certification.

Location:

The project is located directly at the Masaryk Railway Station, the Náměstí Republiky tram stop, and the Náměstí Republiky metro station (line B).

Rental and service charges listed without VAT. Lessee pays no commission.



Office building

Rented

Prague 1, Nové Město, Havlíčkova

