

## House Four-bedroom (5+kk)

Rented

200 m<sup>2</sup>, Prague 5, Smíchov, Na Císařce



## House Four-bedroom (5+kk)

Rented

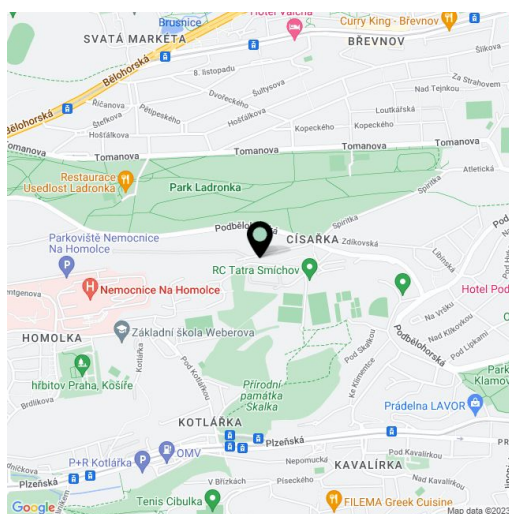
200 m<sup>2</sup>, Prague 5, Smíchov, Na Císařce

Total area	200 m <sup>2</sup>
Plot	410 m <sup>2</sup>
Foot print	126 m <sup>2</sup>
Garden	284 m <sup>2</sup>
Floor area	170 m <sup>2</sup>
Terrace	30 m <sup>2</sup>
Parking	Double garage.
Garage	Yes
Cellar	-
Service price	5000 ?
PENB	G
Reference number	36705
Available from	Immediately

This furnished, fully air-conditioned 4-bedroom 2-bathroom semidetached house with a landscaped garden is situated in the modern Císařka Residence project with a 24/7 reception and manned security, camera surveillance system and a private children's playground. Located in a quiet green area close to the Skalka natural park, the popular Ladronka Park with biking and in-line skating trails, and the Hvězda Park. Area with quick access to the city center and regular bus connections - closest metro stations are Motol and Anděl.

The ground floor features a living room with a fully fitted open plan kitchen and access to the **terrace** and **garden**, a toilet with a bidet, a **walk-in closet** with laundry space, a pantry, and an entrance hall. The first floor includes three bedrooms, a fitted **walk-in closet**, and a bathroom with a bathtub, a walk-in shower and a toilet. The second floor offers a master bedroom with an en-suite bathroom including a walk-in shower and a toilet plus a spacious **terrace** providing beautiful green views, and a utility room.

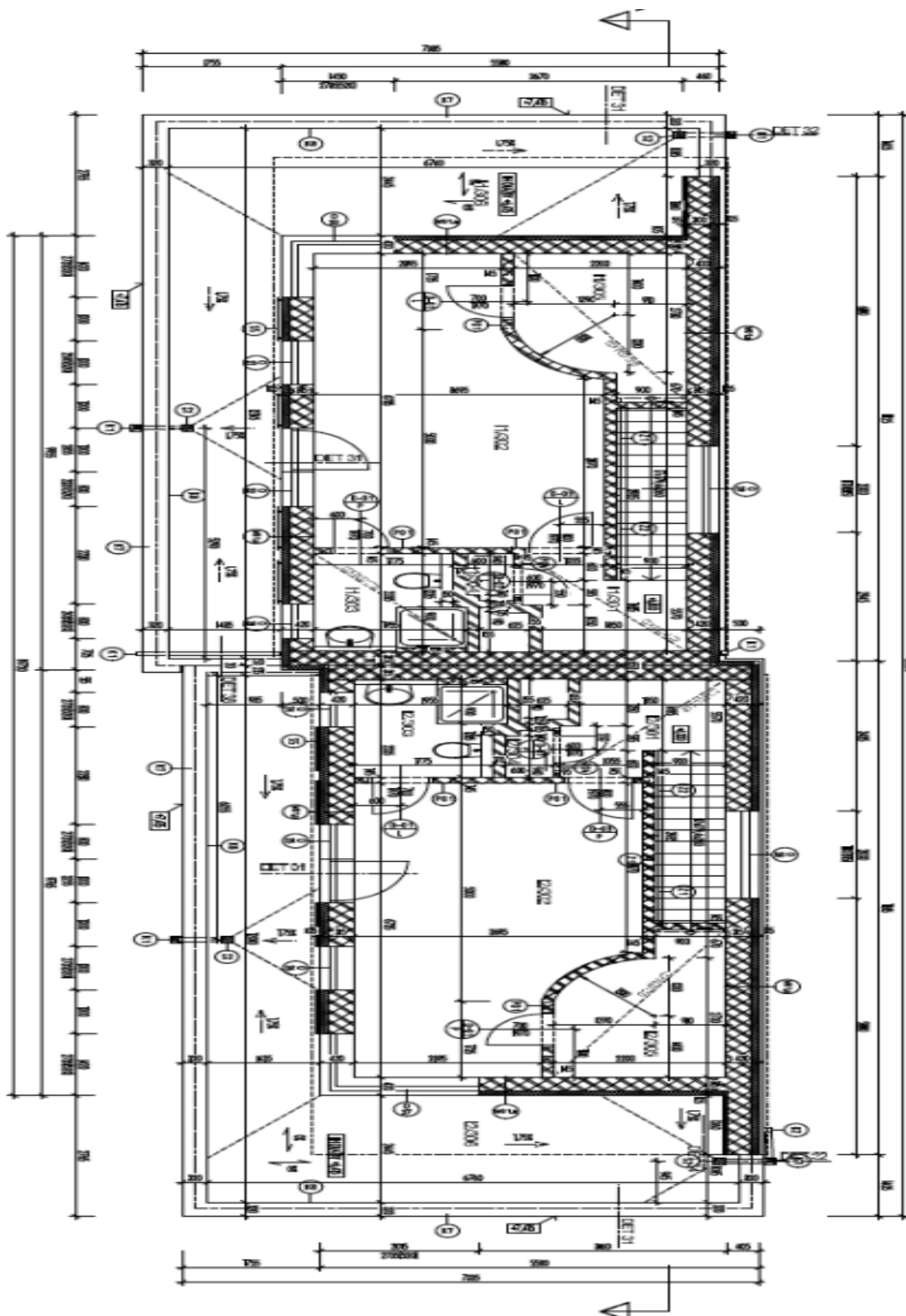
**Air-conditioning, hardwood floors**, tiles, carpets, built-in wardrobes, remote control operated external blinds, gas boiler, washer, dryer, dishwasher, induction cooktop, TV, alarm, garden shed. **Double garage** with storage space. Utilities are approx. CZK 7000 per month. Available from March 2022.



# House Four-bedroom (5+kk)

Rented

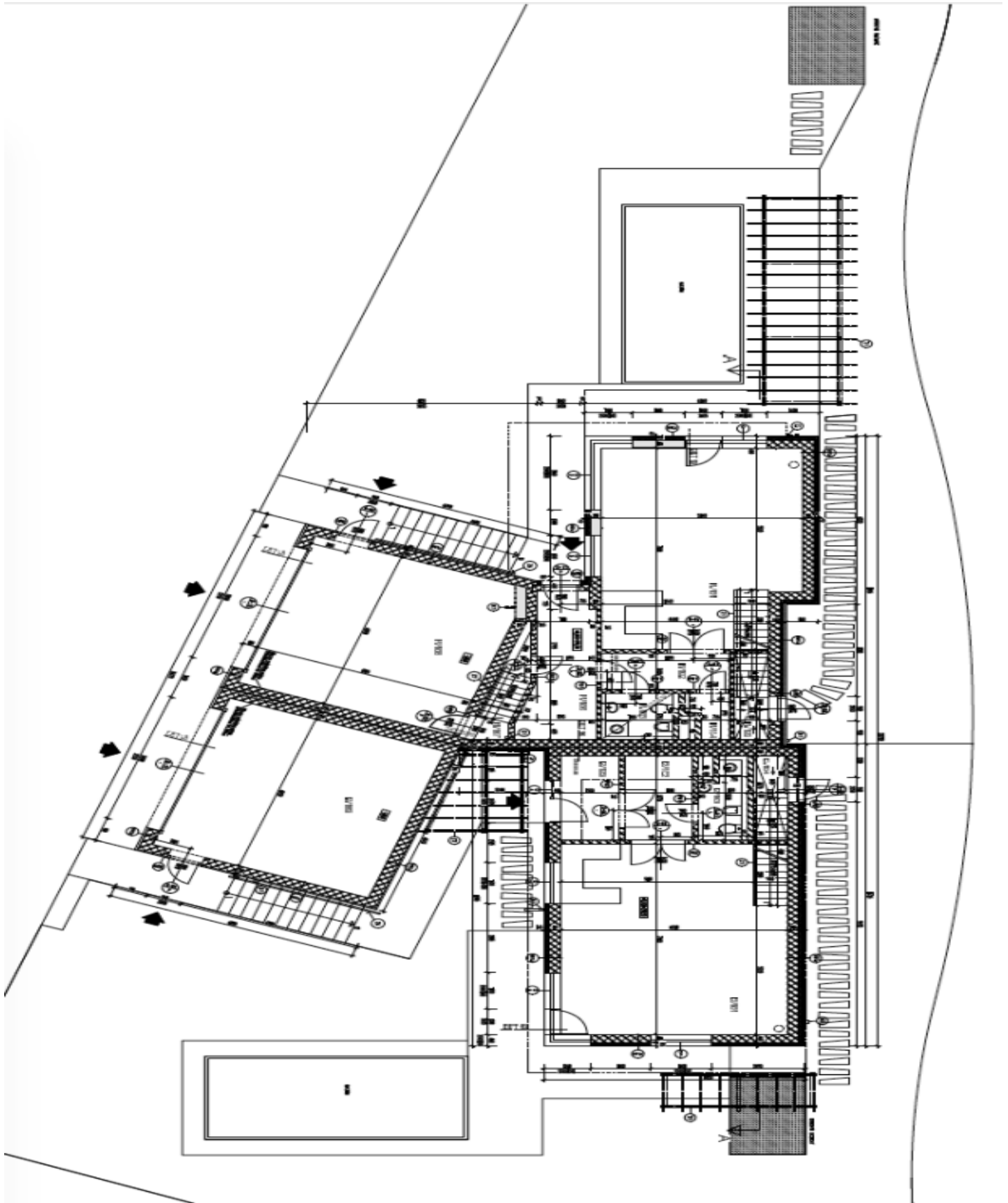
200 m<sup>2</sup>, Prague 5, Smíchov, Na Císařce



## House Four-bedroom (5+kk)

Rented

200 m<sup>2</sup>, Prague 5, Smíchov, Na Císařce



# House Four-bedroom (5+kk)

Rented

200 m<sup>2</sup>, Prague 5, Smíchov, Na Císařce

